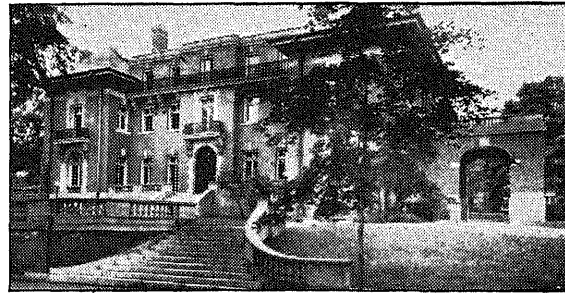


- THE - ARCHWAY



Vol. 2. No. 2

BRYANT COLLEGE, PROVIDENCE, R. I.

OCTOBER, 1946

Placement

Placement Director, Miss Clara Blaney, has released the following information which pertains to the employment status of the August '46 Graduation Class.

Frances Alfano, The Carr Manufacturing Company, Bristol; Matilda Andrews, Remington Rand; Clara Barowman, Attleboro Chamber of Commerce; Victoria Bedrosian, R. U. Lynch Company, Providence; Jeanette Belanger, Dr. Henry Fulton, Providence; Robert F. Birt has joined the Bryant faculty; Jeanne Brennan, Evans Case Company, Attleboro; Mary Capone, J. & J. Corrugated Box Company, Fall River; Ed Clegg has entered Providence College; Marie Clegg, law firm of Barlow & Barlow; Lorraine England has entered the Convent—or is about to do so; Joyce Finney, Max Pollock Company, Groton, Connecticut; Ann Flynn, Secretary at Providence College; Helen Flynn, teaching at Lockwood High School, Warwick; Ruth Forman is at Brown University; Frances Gawek, Comery, Davidson & Jacobson; Gloria Goodloff is with Ward Fisher; Carmela Gizzarelli, who graduated from the Secretarial Division, is returning to Bryant College to the Teacher-Training Division; Ray Gorman has been hospitalized; Marion Grant, Providence Paper Company; Lucille Gottsell has joined the Bryant faculty; Gloria E. Johnson, Ralph Greenlaw, Attorney; Anahid Karentz, with Harvey Flint; George Kane, Kay's Newport; Dorothy King, Milk Producers' Association, Fall River; Marilyn La France, General Electric Company, Schenectady; Ethel Cohen and Pauline Horvitz, pals at Bryant, are both with the Jewish Social Centre; Mary Dederian, Providence Wholesale Drug Company; Barbara Denardo is at Brown University; Jean Drosd, Rhode Island School of Design Museum; Eileen Dubin and Gloria Johnson are working for their Dads; Mary Vales, Kleistone Rubber Company, Warren; Edwilda Wojcik, Davol Rubber Company; Virginia Woodruff is at Smith College; Marjorie Wyllie, American Mathematical Review; Eileen Bonner, Devine Milk Laboratory; Mary Caccia, Cost Cutters Company; Marie Chilli, Balfour Company in Attleboro; Vivian Thurston, Certified Public Accountant Hoff in Newport; Joan Todd, Tax Department of the Rhode Island Hospital Trust Company; Rita Trinquier, W. P. R. O. Radio Station, Providence.

This report is not complete. Further information about your friends in the last graduating class will be released next month.

Co-ed Takes Honors

Marilyn Bourne, Owner of the "Deb" Wins Many Nautical Events

Attention, ye olde Navy men! You are probably unaware that you have a keen competitor in your midst. She is Miss Marilyn Bourne of Riverside, R. I., who has been racing her Oldtown Whitecap for over five years. Every Sunday of this season has found her hauling up the mainsail, cleating in the jib and making ready for another battle of "tacks" and "jibes" with twelve other skippers of the Kickemuit Whitecaps.

In each race of about eight nautical miles the skippers received points according to their finishing position. These Sunday races were held on the Kickemuit River off Mt. Hope Bay. At the end of the season Marilyn had the largest total points and was therefore awarded the "Kickemuit Yacht Club" trophy. The proud owner of the "Deb" also won the Susan Allen trophy which is awarded each year to the winner of the Labor Day Series.

On several weekends during the season, the fleet of Whitecaps participated in various yacht club regattas held in the waters of Narragansett and Mt. Hope Bay. Over 150 boats of different classes participate in these colorful races. Marilyn and her "Deb" led the class at the Bristol and Barrington races and finished second at Coles River and Touisset Point. Like most young skippers Marilyn admits to having a bad case of "jitters" before each race while waiting for the starting gun. Consequently, she is seldom first to cross the starting line. We are told, however, that after the gun goes off and the business of racing begins she and "Deb" settle down and become a tough combination to beat.

Marilyn is a sophomore in the Commercial Teacher Training Course. She is a member of Sigma Iota Chi, Beta Chi Tau, The Masquers, and the Glee Club.

Please Sir, No Onions!

Miami, Florida (ACP)—Girls at Miami University are protesting that the culinary department is hampering their chances for dates on weekends. Now that men are back for good, they want the onions omitted from the potato salad on Saturday and Sunday nights. "Let's have it on some moonless weeknights," they plead.

If wrinkles must be written upon our brows, let them not be written upon the heart. The spirit should not grow old. James Garfield

Greek Letter Council Sets Dates

With the start of each semester, the members of the Greek Letter Council are busily engaged in outlining dates for activities of the various fraternities and sororities. The smokers and teas, now passed, have established more friendly and closer relations between the organization members and the novice.

The Council has set October 23 as the day for the issuing of bids into Fraternities and Sororities. On October 29 and 30, the intended victims will be subjugated to the pranks and drudgery of initiations. Poor kids!!!

Mr. Handy Compiles Book

"Bryant College Exercises in Business English," compiled by Ralph S. Handy, professor of English, Education, and Science of Bryant College, was published for the purpose of meeting the individual need for the correct usage of grammar of all Bryant Students. The mimeographed sheets which were used prior to Mr. Handy's publication were often found to be unclear and caused the students a great deal of difficulty to decipher. Mr. Handy selected material gathered from papers handed in by his students in the many English classes which he taught and compiled the material used in the "Bryant College Exercises in Business English" to help the student have an understanding of English by working actual exercises besides using a textbook.

Previous to becoming a member of the Bryant faculty, Mr. Handy received his Master's Degree in Business Administration from Boston University. A valuable member of the faculty was added to Bryant College when in 1926 Mr. Ralph S. Handy accepted the position to teach Economics and English. In 1930, Mr. Handy accepted a position to teach in Fitch High

(Continued on page 2)

Coming Events

- Oct. 19—Sigma Nu Harvest Hop
- Oct. 29—Greek Letter Initiations
- Nov. 2—Phi Kappa Tau Dance
- Nov. 7—(Evening)
Dr. M. Dorizas
The public is invited
- Nov. 8—Assembly—
Dr. Michael Dorizas
- Nov. 13—Powers Lecture
- Nov. 16—Sigma Iota Beta Dance

Dr. Dorizas to Speak

Famed Educator Returns as Result of Student Demand

On November 8, Bryant student will once again have the pleasure of having Dr. Michael M. Dorizas as their guest speaker. "The Problem of Soviet Russia," the subject of his talk last April, was so highly praised and appreciated, that he has been requested to make two appearances this year, one for the students and one for the public. The latter will be held on November 7.

Dr. Dorizas, a distinguished educator and a great humanitarian, was born in Constantinople, where he gained fame as a member of the Greek Olympic team, and later received his Ph. D. at the University of Pennsylvania. He was in the U. S. Army during World War and was appointed geographic and linguistic expert in Syria and Palestine with the American section of the International Commission on Mandates in Turkey.

The major part of his life was spent traveling in all parts of the globe providing him with a broad outlook on vital national and international affairs and an amazing understanding of mankind. At present Dr. Dorizas is a faculty member of the Wharton School of Finance and Commerce at the University of Pennsylvania.

FRATERNITY TO PUBLISH NEWSLETTER

A spokesman of Beta Sigma Chi has announced that in an effort to maintain the close relationship that its brothers have formed while at Bryant, the members of the fraternity have made plans for a publication which is to be mailed to its alumni.

The Newsletter which will be published three times during the school year will inform alumni Beta members of what their former classmates and fraternity brothers are doing, and also will inform them of Beta Activities at Bryant College.

Through this publication the members of Beta hope to conduct many polls among the Alumni.

Plans for a grand reunion of members of Beta Sigma Chi (dating back to May 6, 1925) are being formulated.

A dashing young fellow named J. Has lost all his happy glow. He used to be sunny, He had lots of money, But that was two blondes ago.

The Archway

Member

Associated Collegiate Press

Charles J. Wielgus.....Editor-in-Chief
 Arnold Cleveland.....Co-Editor
 Jerome Goldberg.....Business Mgr.
 Ernest Ross.....Advertising Mgr.
 Breverly Bluedorn.....Exchange Mgr.
 Joy Grabfelder.....Circulation Mgr.
 Mary Kounas.....Subscription Mgr.
 W. R. Jones.....Photographer
 Esther Rossini.....Secretary

EDITORIAL STAFF

Ruth Karstens Myles Boothe
 Dolores Laurion Eileen Kingsley
 Eugene Spagnolo Lorraine LeMay
 Eleanor Jankura Ruth Carty
 Irene Graham

Blanche Arzooyan Dorothy Hill
 Joseph Riella Frank Merola
 Susan Cummings Ralph Straus
 Ray Rutkowski Robert Dezinno
 Edith Leibler

Published Monthly during the College Year by the Students of Bryant College, Providence, R. I. Statements printed in the ARCHWAY do not necessarily reflect the opinion of the College.

SELF-SERVICE

Self-service is what we can have here at Bryant. By self-service I mean exactly what the name implies. "Self" used as a prefix in compounds denotes the person affected . . . in other words YOU. "Service" is "conduct contributing to the advantage of" and in this case it's also YOU.

While here at Bryant you have an opportunity to help yourself not only to the vast amount of textbook and lecture information but also to any of a number of extra-curricular activities. High scholarship standards should be uppermost in your mind, but extracurricular activities aid greatly in developing a well-rounded and well-balanced life. These activities are not compulsory but it is recommended that you "help yourself."

Should your interests lie in the musical field, whether instrumental or vocal, a vacancy awaits you either in the College Orchestra or the Glee Clubs which are under the able guidance of Mr. Ralph S. Handy.

The Masquers, a dramatic organization, offers you an opportunity to prove your ability of out-doing Bette Davis or Ray Milland. Positions of stage manager, prompter, and property manager are also yours for the asking.

Athletics such as bowling, volley ball, basketball, table tennis, swimming and softball will aid in keeping you in top physical shape.

The student newspaper, The Archway, welcomes your contributions be they articles, cartoons, poems, or photographs.

The Photographic Club which is now being formed by the Student Council will offer to those of you who are interested in photography a chance to meet and associate with others who possess a like interest.

Newman Club members will have the opportunity to sponsor and take part in many lectures, dances and other activities.

Eleven fraternities and sororities

STUDENT FUND

Last April, the students of Bryant began a series of record dances, with the purpose of creating a sturdy ready-cash fund. This fund, when large enough, is to be handled by and for students. Any student who desires emergency cash may borrow from this reserve.

Now, what do you say, fellas and gals—let's have a little hustle and bustle—ideas, suggestions, expand this fund.

MAGNIFICATION

Have you ever looked through a magnifying glass? The effect isn't always too pleasant. Paralleling this thought, let's think of Bryant's "campus" as the product viewed through this magnifying glass.

On a large campus such as Yale's a few papers thrown indiscriminately around do not look too badly; but on Bryant's "campus" those few papers have that "magnifying glass look," and the effect is far from pleasant.

Let's all cooperate and refrain from this careless habit. Numerous waste cans are on duty 24 hours daily. Make them earn their keep.

will soon be sending bids to many of you . . . don't pass up the chance to join. The Greek Letter organizations here at Bryant have done wonders in the promotion of brotherhood and sisterhood.

In addition to the organizations mentioned in this editorial, new ones will be formed when sufficient numbers of students who are interested in similar activities appear before the Student Council and are given recognition by the Council and the Administration.

So here it is, right in your lap . . . HELP-YOURSELF. Editor

KNOW YOUR COLLEGE

There are many interesting things about Bryant College which the average student does not know of, but would like to learn. The Archway now attempts to pass along a few scraps of information which may clear up the "whys" of some students. In the long run, we believe any student should be familiar with his college to realize the responsibility he carries as a member of Bryant.

Don't be green, know your college!

By now you should have heard that Bryant College is the oldest business school in the United States. It was founded January 14, 1863, by those worthy pioneers in the work of business training, Messrs. Bryant and Stratton. These far-seeing, earnest men, who understood the public need and wisely forecasted the future for the school of business met many discouragements while their school was in the experimental stage.

Scarcely a merchant had ever dreamed that there was any other way for a person to learn the mysteries of the counting room, but to serve a long apprenticeship under a head bookkeeper. However, Bryant hurdled this seemingly impossible obstacle as the polytechnic and normal schools had to do before her, and finally gained public recognition and confidence.

Bryant College's first site was

"THE GIRLS ON GEORGE STREET"

You have probably heard about us, met us, and are wondering what branch of the Armed Forces we served in, what states we represent, and our reason for coming to Bryant.

All of us, fifteen in number, served for a total of 38 years in the Armed Forces and represented the Army Nurse Corps, WAVES, WACS, Marines, and Spars. We come from as far West as Utah and as far East as New Hampshire. Some of us were "buddies" in Service, even working in the same office, and now are together again. Take for example Emery and Margaret who "fought the battle of D. C." and are roommates here on George Street. While in Service, our assignments included such positions as secretary, dietitian, payroll clerk, nurse, communications, storekeeper, draftsman, telegrapher, and comptometer operator.

Our reason for coming to Bryant? Although some of us have been to Hawaii, Fiji Islands and New Zealand and have had invaluable experience in the Service and in civilian life, we desire to secure a sound background for responsible, well-paying positions in the future.

MUSICAL NOTE

Mr. Ralph S. Handy, director of Bryant's musical organizations has announced that it is not too late for interested students to join the orchestra or the Glee Clubs. Those desiring to join, are requested to notify Director Handy as soon as possible.

Credits may be earned by active Glee Club or Orchestra members.

in the heart of downtown Providence in the Hoppin Homestead Building with quarters designed expressly for the use of the college. This special interior construction was necessary for the application of commercial training. At that time business education being in its infancy was conducted in a somewhat different manner from its present day procedure.

After mastering the principles and theory of the subject, the student was admitted to the department of practice, in which he applied the knowledge acquired. Here he engaged in a great variety of actual business operations, which he was obliged to conduct and become responsible for. He bought and sold, kept the books, managed the finances, and learned by actually doing it, the various duties that devolved upon the merchant, manufacturer, and tradesman.

These early graduates of Bryant established beyond question the success and utility of the means by which they had been trained. The familiar ease with which they undertook any work offered them in the counting rooms, and the correctness and rapidity with which they accomplished it opened the gates for expansion and her prestige spread. An appropriate beginning for any college, we should say!

POET'S CORNER

Lovely Luella Alliterated
 Lovely Luella lies on the low glad
 Here my dear love, where you are
 I played
 Through meadows, in the bubbling
 babbling, brooks
 Delighting each other, with love
 sacred looks,
 We loved, we laughed, we lolled
 life's mast,
 Lovely Luella this now lies in the
 past
 All this wonder has long been ca
 aside
 Now that Luella, you've long been
 my bride.

Joy Grabfelder

HEY, GIRLS!

How many of you have ever wanted to be famous New York models? How many of you have yearned to know the secrets behind the success of the famous models? Well, here is your chance at last! Teachers from the John Robert Powers School will lecture to you on various important topics. The first lecturer, Miss Russell, will speak on October 16, 10:00 a. m. in the Gym. All girls must be present at these assemblies.

At last you will have a chance to discover whether or not you have a model's figure, an average figure, or, well, you know . . . Various speakers will lecture on poise, comportment, make-dow diets, personality, and orientation. Any smart gal who wishes to become some busy executive's "right hand" will get a great deal out of the talks on physical and personal development.

(Continued from page 1)
 School, Groton, Connecticut, where he remained for three years. After this time, he again returned to Bryant College and has remained on the faculty ever since.

Besides teaching English, Advertising, and Science, Mr. Handy is a faculty advisor for Beta Iota Beta Fraternity and is director of the Bryant Glee Club and Orchestra.

Perhaps the Washington baseball team was named Senators because they make plenty of errors and do not always play together.

(From the Washington Post)

Editor's Mailbox

Dear Editor:

A matter of current interest and importance to students and faculty alike is becoming more obvious each day. The disagreement of the clocks in each of our four buildings is a serious problem.

This is not a new situation; the seniors will remember its existence in past semesters. It is, however, even worse this year when many students must go constantly from building to building.

A few minutes lost because of varying dismissal time often means being forced to be late for a class in another building. Since most of the instructors, under our present marking system, deduct points from final averages for each class, the cuts become very important to the student.

The lack of an accurate time system affects all of us and it is hoped that corrective steps will be taken.

CG

Around the Campus

Report on Sigma Lambda

by

Rosemarie Budka

The year has started; we've had some fun

But wait until you see
And hear of the plans being made by

Sigma Lambda Sorority!

"A dance?"—Not yet, but we'll have one

(The date is set aside)

And maybe a gala hayride—
(On that we can't quite decide.)

And serious business we've tended
When our thoughts became solemn and sober

In anticipation of "Rush Week"
Which commenced the ninth of October.

So be on your guard and watch for
The girls that will set the pace:

Sigma Lambda Theta Sorority
The I-A, the Tops, and the Ace!

Kappa Tau Appoints Committee

At a regular meeting of the Phi Kappa Tau fraternity the following members were appointed as chairmen of the forthcoming Autumn Frolic: General Chairman, Frank LaFazia; program committee, Jerry Albert; finance committee, Arthur Pillsbury; entertainment, "Bud" Foley; decorations, John Donais. O'Connell

State Recognizes Beta Sigma Chi

A few days ago the Attorney General of the state of Rhode Island notified the corporation "Beta Sigma Chi" that its charter has been reinstated and is now in its 22nd year. The charter permits the corporation perpetual succession, right to sue or be sued in corporate name, right to use common seal and alter same at own pleasure, also the right to own personal or real property in an amount not to exceed \$150,000.

The charter, filed with the Secretary of State, revealed that E. Gardner Jacobs was one of Beta's five incorporators. Andrews

Sigma Iota Plans Active Season

The national sorority of Sigma Iota Chi began its forty-third year with more enthusiasm than ever. Here at Bryant College, Beta Theta Chapter's calendar is studded with brilliant soirees, both formal and informal. The first will be a Halloween Mystery Ride on October 30 for the members and guests of Sigma and Phi Sigma Nu.

The solemnity and hilarity of "Initiation Week" is eagerly awaited. All plans have been made pending decision of the Student Council.

Mrs. Anthony E. Bott, Grand Worthy Matron, is planning a visit to this Chapter some time before Christmas. Is it any wonder that all thoughts are centered on preparing a royal welcome? LeMay
(Continued on page 4)

SEARS DRUG STORE

John V. Harrington, Reg. Phar.

Dependable Drug Store

Delicious Milk Shakes

97 Governor Street

WHISPERINGS

The school year was officially opened September 9 when Vinnie Lanardo walked in late, per usual. . . . Mr. Richards had quite the time getting readjusted to school life; he peeped into the wrong classroom and asked where his class was hiding. . . . According to Dr. Powers, Jean Ballard's function in life is to make donuts, and Arnold Cleveland is destined to have a wife and three children. . . . There was a thirsty bunch at the All-College Dance, and it wasn't the punch bowl that was crowded. . . . It's not a cat they are calling when you hear the fellows around Harriet Hall calling "Here Kitty, Kitty, Kitty." . . . Fair warning from Jim Moynihan and Joe Mandata: Be on the lookout for Neva Neri and Gloria Rigali who are at it again. They are passing out Feenaments in Chiclet boxes. . . . Sheila McCann may have an Irish heart but it's certainly turning over for Frank Alberto. . . . Shakey was bad enough, but now there is a girl who called Salisbury Hall from 11:30 p. m. to the wee hours to get the freshmen out of bed. . . . We've got to hand it to you, Gary Brown, ten minutes flat from Bristol is an all-time record. . . . Glad to see Mickey and Tom McHugh out around the portals of Bryant again. . . . I wonder if Bea is taking a course in the scenic beauty of the Brown campus, but I didn't know that painting was most effective by the light of the silvery moon. . . . I guess Beckey knows the number of benches on Brown's campus, now that every bench at Bryant is always filled. . . . Red Goldberg is lost without his Ethel; by the way, she visited her Alma Mater the weekend of the All-College Dance. . . . Pat Cordoza and Nan Hunt, alumni of Bryant, were visiting here just a few weeks ago; seems as if they can't stay away from the old place. . . . Well, I guess Syd Cohen has finally become king; his girl from Hartford sent him a throne. . . . We would like to know why Hockey Hockman spent most of last summer in Connecticut when he hails from Springfield, Mass. . . . Sally Cohen is really stepping it up; she is a favorite at most dances. . . . Max Siegal and Ronnie Baskind have finally "went and did it;" we have just received notice that Max put that ring on her finger. Gee, but we miss their car parked across from school. . . . Eldridge Hall is looking for candidates for their football team; now I understand Rickey Greenbaum's interests in the

(Continued on page 4)

Smile Awhile

My Bonnie lies over the ocean,
My Bonnies lies over the sea—
When she cables unswerving devotion,
My Bonnie lies—obviously—

First Housewife—Does your husband talk in his sleep?

Second same—No; and it's so exasperating—he just grins.

A fiery-tempered business man wrote the following letter:

"Sir: My secretary, being a lady, cannot type what I think about you. I, being a gentleman, cannot say it. You, being neither, will understand what I mean."

A candidate for sheriff called on a minister to ask his vote at the coming election.

"Before I decide to give you my support," said the minister, "I would like to ask you a question.

"Shoot," said the candidate.

"Do you ever partake of intoxicating beverages?" inquired the clergyman.

"Before I reply, I would like to propound a single question," said the would-be sheriff, cautiously.

"Is that an inquiry or an invitation?"

The dean of a certain co-ed college was making an announcement before the student body.

"The President of the college and I," she said sternly, "have decided to stop necking on the campus."

A farmer was driving past an insane asylum with a load of fertilizer when an inmate called to him:

"What are you hauling there?"

"Fertilizer," replied the farmer.

"What are you going to do with it?"

"Put it on my strawberries."
"You ought to live here. We get sugar and cream on ours."

Compliments of

Bryant Cafeteria

Where good food
is always served

Compliments of

BETA SIGMA CHI

(Chartered May 6, 1925)

THE ONLY FRATERNITY
ON THE CAMPUS WHOSE
CORPORATE ENTITY IS
GOVERNMENT RECOGNIZED.

SPORTSCAST

Volleyball Tournament

A volleyball tournament between the dormitory girls is now being played on the two outdoor courts on the grounds at Salisbury and Stowell Halls.

Mr. E. Gardner Jacobs is providing an album of popular music records for the prize to the winning dormitory. Miss Gotsell is in charge of arrangements and Mr. Dickenman will officiate.

Swimming for the Girls
Mrs. Dorothy Robinson is planning ten swimming parties at one of the local pools for the first semester. The time has been tentatively set for four o'clock Wednesday afternoons.

Badminton Tournament
An outdoor badminton tournament is contemplated for both men and women and is to be held the last two weeks of October. Miss Gotsell will be in charge of the girls' league and Mr. Dickenman will be in charge of the men. The girls will play Wednesday and Friday and the men on Monday and Thursday afternoons.

Horseshoe Pitching
The girls from the country are really shining in the horseshoe pitching games that are going on behind Eldridge Hall.

Shuffleboard Court
Consideration is being given to the erection next spring of a shuffleboard court.
(Continued on page 4)

Compliments of

Mr. & Mrs.
Stanley Mason

CARROLLS GRILL

251 BROOK STREET

Just around the corner.
The little place with big
food treats

STEAKS - CHOPS -
DELICIOUS ROAST

Dinner Specials from 50c up

Operated by Vets

LUNCH 11 TO 2:30

DINNER 5 TO 7:30

Tel. MA 9384

PHI SIGMA NU

Presents the

HARVEST HOP

SATURDAY, OCTOBER 19

AT 8:00 P. M.

— Music by Tommy Masso —

75 cents

AROUND THE CAMPUS

Tau Epsilon Holds Elections
At an all-important evening meeting held recently, the brothers of Tau Epsilon elected a new slate of officers for the coming season. Jim Moynihan succeeds Myles Boothe as president, Joe Riella steps into the office of vice-president vacated by Craig Edgar, Francis Sullivan takes over the pen and secretarial book from John Longworth, and Al Barsalou follows Art Yelle as the fellow who will be busy preparing the treasurer's reports. Walter Evans, one of the older members of the fraternity who have returned to Bryant from the service was elected sergeant-at-arms.

The brothers also welcomed back Sam Spada, Russ Connell, Tom Flannigan and Bob Dongeu.

Those who were on the Smoker committee were Joe Riella, chairman; Ernie Ross, Phil Thomson, Tony Catucci, George Watson, and Bob Shortelle.

From the sound of the plans being made at the meeting it looks as though old Tau "Ep" is going to have a very successful social season this year. Plans for a pledgee formal are being made.

Longworth

Kappa Delta Makes Plans

Kappa Delta Kappa Sorority is eagerly anticipating another successful year. Many plans and arrangements have been made to make this the most eventful year.

A meeting was held recently, at which time the matter of obtaining sorority pins was discussed and the dates set for the joint meetings with our brother fraternity, Tau Epsilon.

All are looking forward to the fun of initiation week and the admission of new members to the ranks of K D K girls.

Carty

Lambda Pi Reports

The members of Sigma Lambda Pi are formulating plans for another successful college season.

Secretary Francis B. Sokoll reported a very successful 1946 season. The Firecracker Fun Festival and the Narragansett Moonlight Sail were only two of the fraternity's many social affairs.

The fraternity is planning many interesting activities such as were held during pre-war years, including its widely popular "Sno-Ball."

Sokoll

Treasurer Elected

The first meeting of Sigma Iota Beta Sorority was held in the Biltmore Hotel.

Owing to the fact that the treasurer of the sorority has left school

SPORTSCAST—Continued

fleboard court in the rear of Eldridge Hall.

Basketball

The scores in the girls' intramural basketball league will be something to watch when one sees the eagle-eyed basketeers shooting at the basket that has been set up in the rear of Salisbury Hall.

Bowling

Mrs. Robinson has arranged a bowling league for girls. The time has been tentatively set for four o'clock on Tuesday afternoons.

Mr. Dickerman has arranged a bowling league for boys. The time has tentatively been set for four o'clock on Tuesday afternoons with Eugene Spagnola, chairman.

a new treasurer, Miss Norma Francesconi of the B. A. department, was elected.

The Rush Party for prospective members was held October 11 and all sorority sisters of Sigma Iota Beta made this a night of pleasure as well as a memorable one.

Sigma's first dance of this semester will be held in unison with the Brother Fraternity, Beta Iota Beta, Nov. 16, in the Auditorium of the School.

Eileen Kingsley, president of the sorority, informed the members of their new sorority pins which will be available in the near future. The style of pin will be exclusively that of Sigma Iota Beta's.

Newman Club Makes Plans

On September 28 the Newman Club had its first meeting of the year. The meeting was an informal one, its main purpose being to introduce the club and its officers to the new members.

President Walter Brosseau explained the function of the club, its purpose, told of the activities last year and of plans for another successful year.

For the whole first semester, arrangements have been made to have speakers present at the meetings, which are held on the second Wednesday evening of every month.

Come one, come all, for an instructive, enjoyable evening.

Carty

Beta Iota Plans Fall Dance

As an expression of gratitude for his excellent counsel and genuine interest in its members, the Beta Iota Beta Fraternity gave a farewell banquet at the Narragansett Hotel in honor of its departing

advisor, Mr. L. Newton Hayes. Mr. Hayes was presented a 24K gold Parker 51 pen and pencil set as a remembrance from the fraternity. As a memento, Mr. Hayes gave to everyone present two Chinese coins and a Chinese good-luck verse which he procured while serving in China. In his capacity as Veterans Advisor, Mr. Hayes made many lasting acquaintances and his presence shall certainly be missed.

BIB is completing plans for a gigantic fall dance to be held in November.

Present unofficial estimates of the number of new members to be accepted into the fraternity during Rush Week indicate that BIB will be one of the largest frats on the campus.

Reilly

Phi Sig to Sponsor Dance

At the first meeting of the year Phi Sig decided on the 19th of October as the date for the Phi Sig Harvest Hop. The dance will be held in Bryant Auditorium, to the music of Tommy Masso's orchestra. The following members were elected to the dance committee: Chairman of advertising and decorating, Robert Leblanc; Chairman of the program and tickets, Joseph B. Damon; Chairman of the raffle tickets, Dennis Malloy; John Krupa in charge of entertainment and refreshments.

Albert Butler, Phi Sig's Assistant Treasurer has left Phi Sig and Bryant to take the position of sales manager with a large publishing concern.

Damon

How about the dumb young thing who thought that a goblet was a sailor's child.

WHISPERINGS—Continued

sport . . . Rickey Reamon holds ar other all-time record; he hasn't spent a night in for over a year now . . . We think that Edie Liel ler is a peach; why did someone throw a tomato at her? She caught it, though; says she thought it was a ball . . . Ex-Wave Evelyn Latr versey must have had some pleasant evenings in Hawaii because she idles her time away reminiscing and strumming on her Ukelele.

When tickets were given out to Elaine Shapiro for the All-Colleg Dance, and the question asked: "Freshman or Senior," the poor little refreshers answered, "I guess we can't go, we're not even Freshmen." . . . Isn't it a little too cool to go swimming at Narragansett or could Ernie Ross, John Borel Frank Merola, and Jack Givimiu be misleading me? From what hear their shares in the track as shown by ticket stubs that didn't pay off. That's one that isn't the Corp Org books, Mr. Cruic shank . . . What's this about Dr. MacLane's having to get a hot room for \$3.50 after being locked out by the landlady because it was after 12:00? . . . Some people certainly take care of their car; it was reported that Morrie London even simonizes under his fenders . . . Will Chic McCoy purchase a copy of the Archway this month?

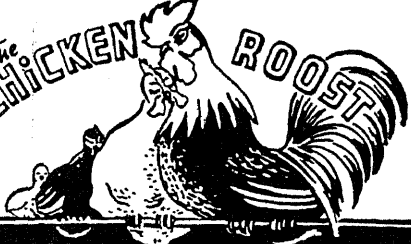
Compliments of

Bryant College

WATCH FOR
TAU EPSILON
ACTIVITIES
WOW!

COMING SOON!!
COMING SOON!!
PHI KAPPA TAU
FRATERNITY
P-R-E-S-E-N-T-S
THE
AUTUMN FROLIC
DANCING
ENTERTAINMENT
REFRESHMENTS
Saturday Evening, Nov. 2, 1946
Bryant Gym — 75c

TONY LEMA
BARBER SHOP
One block down from
Governor St. on Ives St.
(near Power St.)
REASONABLE PRICES

The **CHICKEN** *ROOST*

Featuring
Southern Fried
Chicken
Main Dining Room
34 FOUNTAIN STREET,
Providence, Rhode Island