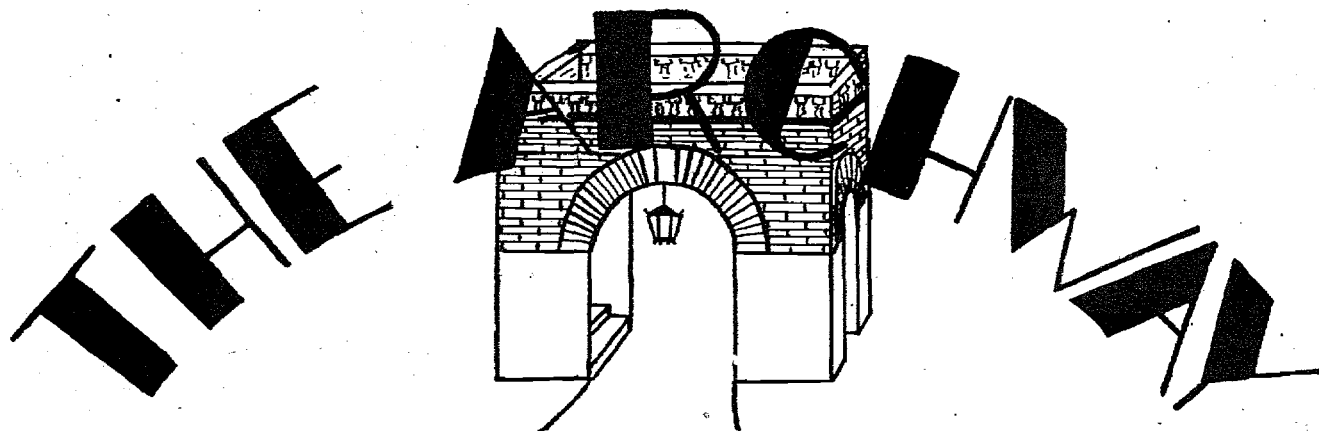


GENE STEVENS
WINNER OF
CONTEST



DEAN WILBUR
IS
MR. BRYANT

VOL. 3 NO. 6

BRYANT COLLEGE, MAY, 1948

PRICE 5 cents

May Queen Candidates Chosen By Frats

Eugene Stevens Wins Mr. Bryant Contest

After final consultation with the judges Eugene Stevens has been announced the winner of the Mr. Bryant Contest. As many of the students guessed, Mr. Bryant was none other than our Dean of Veterans, Mr. Elmer C. Wilbur. Many other names were suggested as Professor Hammond, Doctor Powers, Mr. John Allan and Professor Waite.

The correct deduction of the contest should have been as follows: The 500, 1000, 1500 and 2000 indicate the number of veterans attending Bryant or who have attended and there's more. Interrogation, would be the number of questions asked Mr. Wilbur in his position of dean of veterans. Perplexing problems of all the nation meant that the veterans come from all parts of the country and the various problems each one experiences away from his own state. Fifth from the start and fourth from the end would be the letters E. W. (Mr. Wilbur's initials).

The last clue was the one that stumped most of the contestants—"If you use your bean, the sweetness will be a tasty blend." The bean is the cacao bean of which chocolate is made, and the sweetness is Wilbur Chocolate or Wilbur Buds.

The judges based their decision on the best deduction in accordance with the above solution. The winner will receive the prizes at Beta Iota Beta's May Dance this Saturday evening.

The Archway wants to thank all those who participated in the contest—better luck next time. Also a vote of thanks is extended to all the fraternities: Phi Sigma Nu, Beta Iota Beta, Beta Sigma Chi, Tau Epsilon, Kappa Tau, Chi Gamma Iota, and Sigma Lambda Pi; the following sororities: Sigma Iota Chi, Alpha Phi Kappa, Sigma Lambda Theta, Sigma Iota Beta, and Beta Sigma Gamma; the Business Administration Society and the Accounting Society and the Accounting Society, the Greek Letter Council, and the Masquers, for making this contest possible. Thanks to Professor George Richards, Miss Jane Couchon, Miss Maureen Manchester, and Mr. John Donovan for serving as judges.

Winning Letter

I think Mr. Bryant is Mr. Elmer C. Wilbur because he is Dean of the Veterans Administrative Staff, consisting of approximately 3000 veterans according to the hints given in The Archway. Mr. Bryant must be connected with the veterans since the numbers given added to 5000, and subtracting the non-veterans number of approximately 2000, thus leaving the remainder of 3000 which are veterans. This proves that Mr. Bryant is directly connected with the veterans.

(Continued on page 4)



Top row, left to right: Eileen Kingsley, sponsored by Beta Sigma Chi; Jean Doyle, sponsored by Tau Epsilon; Helen Culpepper, sponsored by Phi Sigma Nu; Bottom row; Sandra Schnitz, sponsored by Sigma Lambda Phi; Jean Fiore, sponsored by Chi Gamma Iota; Gloria Fusco, sponsored by Kappa Tau.

Beta Iota Beta

"Hey, Mac, where's that crowd going?" "You must be a peasant, stranger, if you don't know, because they can be going to only one place and that's BETA IOTA BETA'S May Queen Dance, the social event of the season here at Bryant." "Gee, thanks for telling me Mac, I'm just a refresher and I don't know who the big men on the campus are yet." "Well, stranger, you might as well learn right now that the big men on the campus all belong to BETA IOTA BETA and if anything big is going on around Bryant, BETA IOTA BETA is running it".

So, kind readers, please take note of the foregoing stimulating conversation and beware that you do not display your lack of knowledge regarding the big events that are going on around your favorite campus. Naturally, you must know about the May Queen Dance being sponsored by the distinguished men of BETA IOTA BETA to be held on Saturday evening, May 22nd.

Note the dazzling pulchritude of the May Queen candidates, pictured on this page, decide on your favorite and come to the May Queen Dance and cast your ballot. After casting your ballot, you will want to stay and dance to the scintillating music of STAN MOORE and his Orchestra and listen to the lilting voice of LORRAINE, his charming vocalist.

During intermission you will

want to escort your favorite guy, or gal, outside to the tables that will be located 'neath the swaying maples on the campus where you will be able to enjoy a cool drink beneath the starlit skies. You fellows and girls who have hopes of becoming the leading characters on the campus, after we seniors leave, will enhance your chance of doing so by being seen at the May Queen Dance.

To top off this gala night one that will long be remembered, THE ARCHWAY will present the winner of the MR. BRYANT Contest with several attractive prizes which were collected from the various organizations by RAY STEPHENS.

Remember the date, MAY 22, the place, BRYANT GYM, the time, 8:30 to 12:00, and the donation, a mere 75 cents. Above all, remember that this dance is

(Continued on Page 4)

Canterbury Club To Hear Carlson

C. Lennart Carlson, Director of Christian Education in Rhode Island, will speak to the Canterbury Club on May 19 at 8 p. m. in the Grace Church Rectory, 85 Cooks Street. Dr. Carlson's title will be "Aspects of Christian Marriage."

There will be a short business meeting before the address, at which the by-laws of the club will be presented to the members for approval or correction.

All Protestant students at Bryant are invited to join the Canterbury Club.

Tribute

In September, 1946 the Bryant Campus was blessed by a tall, husky, mild-mannered gent hurrying across the "Upper Campus" to be first in line to register as a Freshman in the Business Administration School of the college. Little did we realize the talents of this modest individual, nor the many hours of entertainment and hard work that he was to accomplish as a member of the student body. At first you didn't notice the quiet figure of RAY STEPHENS as he passed to and fro among the classrooms, but gradually through association with him, you knew that here was a guy worth knowing.

It all began when Ray "signed up" with the Glee Club. No one knew that he had musical talents until, with the cooperation of Mr. Handy, Ray put out a call for talent for his first production at Bryant—"Cole Black Joe and The Seven Babes". Ray not only produced the show but also wrote the script and the music, as well as rendering his humorous version of "Are you spoken Fer". "Aincha Goin' to the Harvest Hop", "New York, New Haven, and Hartford" and "Men—we're thru with Men" were just three of the songs written by Ray for the show.

At the Christmas Ball at the Biltmore, Ray introduced a new song which he had composed—"At the Bryant Christmas Ball". Then there were Stunt Nights in

(Continued on Page 4)

Your Student Activity Council

Just what is the Student Activity Council, and what has it done? This question has been asked so many times that the Student Council feels that it should clarify these points. To begin with, the Council consists of the representatives of 24 organizations which are recognized as such on the campus. The Council has drawn up a set of by-laws which will be posted on the bulletin board for the benefit of the student body. The Council supervises many of the major activities on the campus. Officers of the Council are:

President, John Crowley, Phi Sigma Nu; Vice-President, Ed McGarry, Beta Iota Beta; Secretary, Ruth Carty, Newman Club; Treasurer, Rita Saccoccia, Sigma Iota Chi; Publicity Director, Adeline Bento, Sigma Iota Beta.

Since the beginning of the new semester, the Student Activity Council has accomplished many things. Briefly, they are as follows:

In connection with sports, each organization must contribute \$10 which would be used in case of an accident on the part of one of the players. If two games are missed by an organization, that particular organization forfeits its \$10 bond. At the end of the season if the funds have not been used, they will be divided among the organizations that contributed to the fund.

A new mirror has been installed in the ladies' room in the gym. Waste baskets have been provided in the gym, and refuse cans have been placed on the campus. All students are urged to cooperate in keeping the campus clean.

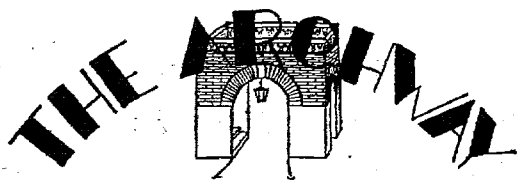
Glassed-in bulletin boards have been ordered and will be placed in Memorial Hall as soon as they arrive. These boards will be colorful, impressive, and easy to read. Notices of meetings, smokers, games, and other organization functions will be placed within these glassed-in boards. In connection with mail boards, the student body has been asked to refrain from using the original mail board in South Hall for personal correspondence. This board is for the sole use of the Student Council.

Two new clubs will be organized, provided enough students show interest in them. These are the Bridge Club and the Radio Club. One of the students on the campus owns a shortwave and broadcasting set. A radio laboratory will be provided for the use of the Radio Club as soon as it is organized. Notices about the formation of these two clubs will be posted on the boards.

Another telephone booth will be installed in the near future.

These are only a few of the

(Continued on page 4)



Editorial and Business Offices, Gardiner Hall, Bryant College
Address: Bryant College, 1 Young Orchard Ave., Prov., R. I.
Telephone GASpee 3643.

Published monthly by the undergraduate body of Bryant College

Member
Associated Collegiate Press

EDITORS

Russell R. Andersen

Charles M. Scranton

BUSINESS BOARD

Business Manager Robert Dezinno
Advertising Manager George Maiocco
Circulation Manager Paul Zingale

MANAGING EDITOR

Editorials Lorraine LeMay
Sports Ed Hanna, Rita Saccoccia
News Ray Stephens
Exchange Nette Gurnik
Photography Joseph Ryan
Typist Madeline McKenna

REPORTERS

Eileen Kingsley, William Connor, Herbert Hale, Rhoda Schall,
Dorothy Klein and Frank Palumbo.

Statements printed in the ARCHWAY do not necessarily
reflect the opinion of the College

Clean-Up Campaign

By WILLIAM E. CONNOR

"THE NEW LOOK."

This is a phrase which we hear on every hand; applied to "cute little things" dresses, automobiles, houses, and even mid-semester marks. We feel that our college campus should also have a new look.

Bryant students are fortunate in that the college campus is located in a pleasant residential section of Providence. The many advantages of such a location will be borne out when one contrasts our location with some other colleges that are made up of one or more city blocks. As difficult as the parking problems seem to be at Bryant, they seem inconsequential compared to those we would have if the college were located downtown on Fountain, Washington or Westminster streets. Every student will surely realize many more advantages of the ideal location of Bryant than this one point of parking.

A little further thought will cause the student to realize that there is a responsibility attached to such a campus location. This responsibility is to keep the college grounds in a condition that is a credit to the surrounding private homes, and it rests with both the college and the student body. Proof that the college is cognizant of this responsibility is shown by the landscaping and other activities now being carried on by the maintenance staff. Also by the same staff there is a daily routine of raking, sweeping and gathering rubbish. We feel, however, that this responsibility needs to be brought to the attention of some members of the student body.

There are only a few students who are responsible for the milk bottles, papers and food which show up in the gutters adjacent to school property, in the campus shrubbery, perched on adaptable fences, and on the campus in general. However, these few abuses cause unfavorable attention to be focused on all students, as well as on the college itself. Such a condition is aggravating to the more, civic-minded students (representing the majority) who must observe such untidiness. Such a condition is more aggravating to the administration, since they must clean up after students who throw refuse about the college grounds.

Students who eat in their parked cars are not the only offenders; but the bottles, papers, and other refuse in the gutters and on the main sidewalks seems logically to come from this group. It does not seem to be too great an effort to bring bottles back to the cafeteria, or deposit rubbish in one of the several cans on the campus. The people who eat their lunches on the benches have less excuse. Obviously this condition does not exist because of a malicious attitude of students, but because the guilty students act without any thought.

The administration is willing to do everything possible to correct this existing evil, yet success is very dependent upon student cooperation. Constructive suggestions for keeping the campus clean are welcome. As an example of such suggestions, the Archway offers this—Place bottle racks on the campus for those who eat lunches outside. Any suggestions along this line should be placed on the bulletin board addressed to the Archway.

Remember when the first sergeant used to say—"If it don't grow, pick it up. If ya' can't move it, paint it". The administration's desires is not quite this strong but it does hope for some thoughtful student cooperation in giving the "new look" to the college campus.

THE EDITORS AND STAFF EXTEND THEIR DEEPEST
SYMPATHIES TO THE FAMILY OF HARLAND HANNA
WHO PASSED AWAY ON MAY 7, 1948.



WHISPURRINGS

I wonder who the girl is who caught JOE DARBY'S eye at Nasson College, Maine. Seems that JOE makes a trek home every weekend Who's JOE PESCHEL'S new heart beat from Portland Maine? Could she be a nurse?? We certainly hope that the Masquers have a large attendance at their play May 26. Where does BARBARA LACOUR get all her men? There's quite a controversy in the softball league as to which team is going to win the league. Why is it that the Secretarial students prefer Secretarial Practice to any other course? After HARVE WEIBEL gave ARMAND GENGA golf instructions he can go around in the low 200's. You should have seen him before these professional lessons Did you see the Powers Model the 12th of May? Watch for drastic changes in the girls at Bryant Trying to improve their tennis ability for competition in the Davis Cup matches: Ledger Morrison and his ever-faithful companion Gerard. And we don't mean Henry Morgan's Gerard There are rooms now available at Glamor Manor for anyone who is willing to share his money, car and w-LUSSER will interview every man. Recruiting officer TED nite this week at midnight Favorite elective subject, Money and Banking News! Veronica Lake had her hair cut. So did MARY DOLAN Is it true that Beta Sigma Chi smeared Tau Ep Nominated for true friend, ETHEL HASKINS CARL DUQUETTE, our own tennis star, is planning a tour of the country with Bobby Riggs Rumors are flying regarding summer practice for the varsity basketball team DOROTHY HILL is another Don Juan of the female species Wedding bells for JEANETTE and ERNIE WHEEZIE of Harriet Hall hasn't sat down since the weekend of May 8th. Could it have been that big bad horse? DAVID OLMSTEAD has decided to quit his job and make a living playing cards It has been rumored that PAUL ZINGALE is engaged. Who is the lucky girl, PAUL? Most conscientious, EVERETT MELLO JANE FULLER should have a very complete vocabulary after looking up all those words for English JOHN SADOWSKI has been seen with his head sticking out of a third story window in South Hall scanning the campus for EIL- EEN ANDY GROSSNER and TED KRAMPITS are now dining nightly at the Biltmore—they like the atmosphere FRANK AUBE is jealous of JOE DARBY'S name being mentioned each issue in the Archway and wants his mentioned so we hereby mention it. Anything to oblige Where did JIM O'GARA of the 1025 Club get all the information about MR. CRUICKSHANK and his chickens? PROFESSOR SHARPE also met his match in O'GARA at BETA IOTA BETA'S

(Continued on Page 4)

Exchange Notes

The Editors' Dilemma Getting out a newspaper is fun but it's ni picnic. If we print jokes, people say we are silly. If we don't, they say we are too serious. If we clip things from other papers, we are too lazy to write them ourselves. If we don't we are to fond of our own stuff. If we don't print contributions, we don't appreciate true genius. If we print them, the page is filled with junk. Now like as not someone will say we swiped this from some other paper well, we did—via BOSTON HEIGHTS and THE GRIFFIN (Canisius College, Buffalo, N. Y.).

Wonder if the following incident has ever happened to any Bryant students during one of their frequent trips to Lincoln Downs—Racetrack visitor: "How did you manage to win the race today?" Jockey: "It was easy. As we neared the stretch, I kept whispering in the horse's ear, 'Roses are red, violets are blue, horses that lose are made into glue.'" (St. Bona Venture.)

From the CAMPUS (Oklahoma City Univ.) comes this new word and its meaning Diamond Fever: An intangible force which is prevalent in the female of the human species. Its zenith is reached in June, leaving in its wake engagment or frustration.

The following clipping is supposed to show the true character of the typical college girl FLORIDA ALLIGATOR "I've a friend I'd like you to meet."—Athletic girl: What can he do? Chorus girl: How much does he have? Literary girl: What does he read? Society girl: Who is his family? Religious girl: What church does he attend? College girl: Where is he?

Here are the conclusions of a poll conducted on Northeastern Univ. campus Should vets marry in college? Out of the 582 students questioned 58% think that vets should get married while in school. 25% said no, and 17% were undecided.

The following classified ads appeared in the N.Y.U. publication, VARITIES WILL SELL 10,000 1943 calendars and print eradicator, cheap WILLING TO SELL car with no motor, ideal for parking Unek Auto Co. Beautiful homes available for vets only Prefab house Acme Shoe Box Co.

PERSONAL: Man with drawers seeks fancy dresser. Box 8.

Buy U. S. Savings Bonds

Beta Looks Forward

After a winter filled with dances, skiing, formals, basketball and bowling, Beta Sigma Chi looks to the spring events. The baseball team is rounding up into top form and with the best players of last year and the new pledges, they are going to be a hard team to hold.

The pledge formal held at the Churchill House proved to be a stellar affair attended by many of Beta's alumni. On the agenda for the coming months, there is a trip to Cape Cod for a weekend, and a trip to Boston for a ball game.

The golf team and the skeet team are hitting their stride after a long layoff and will again be competing with top teams in the area.

Beta's dance "The New Look" was very successful and a large number attended. The decorations were unique and really gave the auditorium that "new look".

Many of the outstanding pledges on the campus were accepted into the fraternity and it looks as though Beta Sigma Chi is headed for continuous success and good times.

CARROLLS GRILL

251 BROOK STREET

Just around the corner

The Little Place With Big Food Treats

Steaks - Chops
Delicious Roast

Dinner Specials from 50c up

Operated by Vets

LUNCH 11 TO 2.30

DINNER 5 TO 7.30

Tel. MA. 9384

Compliments of

Bryant Cafeteria

Where Good Food

Is Always Served

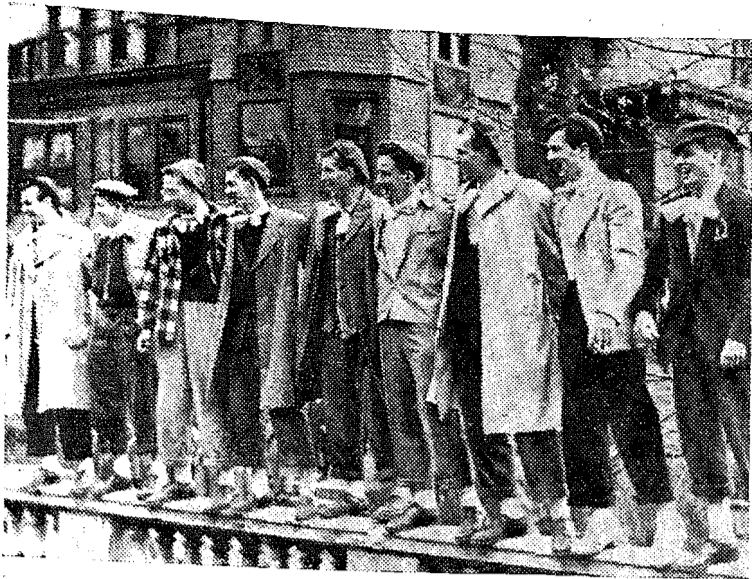
WEDDING BELLS

The wedding of Ernest St. Peter of Newport, Vermont, a Bryant student, to Miss Ann Malek of Holyoke, took place on May 9th, in Holyoke, Mass.



Left to Right: William Scannell, Ovide Pelletier, Chester Holda, Richard Barcomb, Wilfred Scannell, Ernest St. Peter, groom, Joseph Malek, Dominic Mandura, best man, John Malek and Richard Upham.

Hell Week



Reading left to right, Daniel Chiaverini, David Kaski, Fred Trapassi, Louis Spencer, Fred Skiwz, Herbert Y. Mason, Herbert Hudson, Robert Hobday, Jr., and Wallace Ackroyd.

Hell Week at Bryant

By RAYMOND STEPHENS

Hell week has come and gone once again and another group of pledges to the sororities and fraternities has gone through that semi-annual event known as the ceremony of initiation. During that week it was a common thing to see the unfortunate or fortunate girls coming to classes with lampshades on their heads, pajamas, evening gowns, and what have you. This year, however, they weren't noticed as much, probably due to the fact that most people didn't know whether it was a part of the initiation or just the "new look".

Not all the fraternities go in for such formal goings on, but Phi Sigma Nu with their green and yellow, Tau Epsilon and their red, and Sigma Lambda Pi and their blue outfits, were really quite noticeable. Kappa Tau and their paste board signs also showed the true fraternal spirit of initiation. Phi Sigma Nu was probably the most active group, and Phi Sig pledges were put through their paces this year by Frank Nolan, their pledge captain. Public attention was attracted with their visit to the state house. They even got a write-up in the Providence papers for wanting to sing to the assembly. Pictured above is the talented group of individuals in front of South Hall trying to serenade (?) the co-eds.

The initiation ceremony, which lasts only three days, is frowned upon by many, but it does add to the social life and activities on the campus. Maybe if all the sororities and fraternities set up some sort of initiation procedure, there would be many more laughs and a great deal more of the item known as "college spirit". So let's get on the bandwagon and next semester really make it a Hell Week at Bryant.

Bryant Radio Club

The first meeting of the Bryant Radio Club was held Tuesday, May 4, in Room 1A. The club was formed with the intention of starting a radio station for the campus. Mr. Wilbur and Donald Victorson, originator of the club, explained to the group

Sigma Iota Beta

By ADELINE BENTO

"SIB is really tops." Such are the comments that one is apt to hear quite frequently on the campus, and why not? Aren't they the leading sorority on the campus? SIB girls are typically *Sauve*, *Intelligent* and *Blithe*.

Sigma Iota Beta's annual banquet, held on Thursday night, May 6, was, as usual, a great success. The new pledges were convinced of the friendliness and the pep and ambition of SIB girls when hidden talents were brought into the spotlight during the evening. This formal meeting will long be remembered, particularly since many humorous incidents, or shall we say "accidents," occurred during the ceremonies.

SIB is anticipating a full calendar of social events. Plans are now being made for our dance to be held at the Gym on Saturday, June 26, and for a beach party to be held jointly with Beta Iota Beta. The sorority is also looking forward to more of its popular joint meetings with BIB.

The SIB Alumni, which is the only active Greek Letter alumni group on the campus, has just sponsored a raffle for an RCA portable radio and is now completing plans for a party.

the necessary details which must be performed before they can begin with the actual broadcasting. Before proceeding with their plans, the students of the organization plan to visit one of Rhode Island's broadcasting studios to acquaint themselves with the functions of operating a radio station.

BEAUTIFUL LEGACY

When Oscar Wilde departed this earth, he left more than beautiful literature. Those gorgeous Wilde twins (Lee and Lynne) in "Silver Lining" are his grandnieces.

WALDORF



FOR
Formal
Dances
TO HIRE
New
Tuxedos

Waldorf Clothing Co.

Men's Formal Wear—Exclusively

212 Union Street

Cor. Weybosset

The Spring Concert

Rehearsals have been going on for the past month or so for the annual Spring Concert Festival that is sponsored by the Bryant Music Clubs. The Girls' Glee Club, the Men's Glee Club, and the orchestra are being put through their paces by Professor Ralph S. Handy, the director. The concert was an outstanding success last year and from all indications the concert this year will surpass it. The date of presentation has not been definitely decided upon, but will probably be the first part of June.

Phi Sigma Nu

After a successful "Hell Week" Phi Sig's new members were formally initiated into the fraternity Friday evening, April 30. The initiation ceremony (?) was held at Plant's Farm in Scituate with the girls from Sigma Iota Chi gracefully helping out with the social end of the festivities. Among Phi Sig's new members are the following:

Fred J. Skuirz, Fred Trapassi, Robert Hobday, Jr., Bernard A. Jacobs, Herbert Y. Mason, Louis Spencer, Robert L. Raffauf, David R. Chiaverini, Wallace Ackroyd, Herbert W. Hudson, K. David Kaski and Roland Terrien.

Plans have been completed for the frat's annual visit to Boston for the ball game on June 5. Arrangements are also being made for a fraternity picnic and outing in the near future.

Frank Nolan and the pledges are being swamped with letters and telegrams from the State Capitol thanking them for the excellent cleaning job (with toothbrushes) they performed on the state seal???

Varsity Golf

MANAGER CARL SVENSON has sent out a call for all golfers, present or potential, but so far only a handful of candidates has shown up. If any of the readers are interested in playing golf please contact Carl by leaving a note on the bulletin board, or by calling on him in Room 2A, South Hall, between the hours of 10:45 A. M. and 3:45 P. M.

Compliments of

Bryant College



FOR THE FINEST IN
CORSAGES

Campus Florist

187 MATHEWSON ST.

DE 9476 Open Evenings

Greek Letter Dance

Randy Brooks, his Golden Trumpet and his famous orchestra, have been engaged to play at the Eleventh Annual Greek Letter Dance, June 19th, at the Sheraton-Biltmore Hotel. Heard coast to coast on all major networks, the famous Golden Trumpet is coming to Providence direct from New York's 400 Club.

3500 Couples Danced

"UNDER THE STARS AND ELMS"

Last year 3500 couples danced to the music of two leading orchestras at Brown University's Campus Dance on the College Green. We Hope that you will join us this year at our gayest and most colorful social event. Come to the—

CAMPUS DANCE

College Green
June 18, 1948

Brown University
9 P. M. to 1 A. M.

FORMAL

TICKETS AT \$2.00 A COUPLE ON SALE AT AYLSWORTH TRAVEL SERVICE, 27 WEYBOSSET ST., AND AT CANDY COUNTER, FAUNCE HOUSE, BROWN UNIVERSITY.

ENJOY THE SOCIAL EVENT
OF THE SEASON

BETA IOTA BETA'S

May Queen Dance

Saturday Night
May 22nd

Dancing
8:30-12

COME AND CAST YOUR BALLOT FOR
YOUR FAVORITE QUEEN

DONATION .75

ADDED ATTRACTION—THE PRESENTATION OF
AWARDS TO THE WINNER OF THE BR. BRYANT
CONTEST.

TOMMY MASSO

and
His Orchestra

MUSIC FOR ALL
OCCASIONS

Cent. 0051

Cent. 1225

Bryant Loses Opener to State, Tames Brown in Second Tilt

Taking five out of the six singles events, the R. I. State tennis team opened the season with a 6-3 victory over the Bryant College Varsity at Kingston.

After two hours and ten minutes of play, Tom Wentworth of Bryant defeated Augie Van Cougayhen of State 6-3, 6-8, 8-6.

The Bryant varsity tennis team took their first victory of the season on May 11, defeating the Brown Freshman 6-3. Four of the six single events were won by Bryant. Wentworth won his match, taking two straight sets to remain undefeated.

The Bryant varsity takes on the University of Conn., Hartford Extension, at Hartford on May 14. In one of the highlights of the tennis season Bryant visits Brown to play the Bruin varsity on May 18. This event being played so close to home, it is hoped that there will be a large group of Bryant supporters on hand to cheer the team on to victory. On May 21 the U. Conn., Hartford Extension, will visit in a return engagement.

Whisperings

(Continued from Page 2)

annual pledgee banquet Fortunately O'GARA forgot that PROFESSOR HANDY was also there Where did JEAN DOYLE get that 1941 Buick Convertible we see her driving around in? We have received numerous letters asking us to thank SONYA for sympathizing with the Phi Sigma Nu pledgees cause they couldn't catch FRANK NOLAN Who is that new heart throb JEAN FIORE? We hear that CHARLIE ROY is going steady. That's a joke, son!

Beta Iota Beta

(Continued from Page 1)

being sponsored by the leading fraternity on the campus, BETA IOTA BETA, known far and wide for its QUALITY AND QUANTITY.

Tickets may be purchased from any of the handsome men of BETA IOTA BETA who, in their spare time, pose for Calverts, Spur Ties and Kremel Hair Tonic. It will be advisable to buy early, while tickets are available, so that you will be assured of a spot on the dance floor. Remember, the May Queen Dance is THE social event of the season.

ROBINSON TO PARIS

Edward G. Robinson, famed cinema meanie, has made arrangements to attend his wife's art exhibition at the Matignon Galleries in Paris this June.

Tribute

(Continued from Page 1)

1946 and 1947, Spring Festivals, Christmas Assemblies, Headliners of 1949 and many others in which Ray took an active part.

Perhaps Ray's greatest success was the "Headliners of 1949" which he also produced and directed. It was acclaimed the finest show that had been put on at Bryant College in a good many years.

But Ray's talents are not limited to the musical field. For the past year and a half he has been a reporter for the ARCHWAY and has been doing a splendid job. He has just completed a good job of promoting the "Who Is Mr. Bryant?" contest—writing the material, initiating the contest, contacting all the fraternities and sororities, collecting all the prizes, buying all the gifts, writing the clues, selecting the judges, and arranging for the awarding of the prizes. It has been a tremendous job for which Ray deserves all the credit for unselfish performance. Each issue contains three of four articles submitted by Ray, who has shown unusual writing ability.

Other achievements include: active membership in Phi Sigma Nu, President of the Glee Club, past Treasurer of the Business Administration Society, a member of the Student Activity Council, Business Manager of The Ledger, News Editor of the The Archway, a member of the Masquers, and active promoter of goodwill throughout the campus.

If any student should receive the award for doing the most for Bryant College, I believe it should be RAY STEPHENS. His unselfish attitude, his devotion to promoting good fellowship, and his aggressiveness in working for his fellow students and the school cannot be praised too much. Bryant will lose a grand fellow when Ray graduates in August, one who will be missed by all.

Winning Letter

(Continued from page 1)

Since he is not a member of the student body, the most likely person would be the advisor of the veterans who is Mr. Elmer C. Wilbur. His name also corresponds with the rest of the information which stated "fifth from the start, and fourth from the end." The letter E is fifth from the beginning of the alphabet and W fourth from the end of the alphabet. The mentioning of "sweetness will be a tasty bland" consisting of the sweet Wilbur Buds. I'm convinced that Mr. Bryant is Elmer C. Wilbur.

Men's Softball

A meeting of all softball team managers was held and the starting date for the intra-mural league was set for Monday, May 24. A fee of ten dollars is to be charged each team entering the league for the benefit of any player injured during the season. If a team forfeits its second game it loses its chance to share in what is left of this fund at the end of the current season. Three reasons for forfeiture were decided on: one, any team appearing after the starting time; two, not abiding by the umpire's decision, and three, having an unqualified player on the roster.

Eight teams have entered and games will be played Monday through Thursday inclusive. The games will be played at Hope High Field at six o'clock in the evening.

Beta Iota Beta, last year's champs, have their same strong team back and have a good chance of repeating this year. However, there are seven other teams in the league and they will press Beta hard to the end. Many of the teams have been practicing once or twice a week to get into condition. The intra-mural league should show the true competitive spirit of the frats and independent teams and we know the best team will win.

Your Student Activity Council

(Continued from Page 1)

many things the Council has done to benefit the student body. It is up to the students themselves to co-operate to that end. The Council can suggest improvements, but unless the student body is behind us 100%, our plans cannot go through successfully.

Just as a reminder—in order to eliminate any misunderstandings about the formation of new clubs and their right to have dances, etc., all organizations must be formed through the Student Council.

The Council welcomes any suggestions students may have. If you have an idea that you think might be of benefit to the student body as a whole, tell your organization representatives about it, or if you aren't in one of the 24 organizations represented in the Student Council, see any of the following Council members:

Arnold Stansfield, Margaret Hazarian, Russell Andersen, Edgar Burgess, Jr., Evelyn Bradbury, Ed McGarry, Russ Bousquet, Phyllis Hochstaine, Ken McBride, Catherine Keenan, Ray Stephens, Joyce Tiemann, Clifford Cohen, Francis O'Connell, Al Butler, John Crowley, Adeline Bento, Rita Saccoccia, Joseph Zexter, Joanne Burke, Edward Hanna, Ruth Carty, John Holden.

Adhesive Tape Halts Snoring

A small strip of adhesive plaster across the corners of your husband's mouth may halt that hideous snoring and permit you to get a refreshing and uninterrupted night's sleep.

Science has turned its pitiless light on the causes of snoring, according to the April issue of Good Housekeeping magazine, which states:

"Experts have determined that the thin edges of area in which the tonsils lie vibrate during snoring. The vibrating parts are affected by the relative position of tongue and soft palate. A nasal obstruction causes mouth breathing and snoring.

Buy U. S. Savings Bonds.

Who's YOUR Choice For President?

This newspaper—along with hundreds of other student publications in every part of the country—has decided to poll the presidential preferences of its student readers. Local results will be announced soon—and the countrywide tabulation will be publicized nationally via press and radio by Varsity, The Young Man's Magazine, before the major political parties meet in Philadelphia to choose their candidates. This is a vital election—so cast your ballot now, and help give America's students a stronger voice!

* * *

CIRCLE ONE NAME ONLY

Ellis Arnall	Leverett Saltonstall
Harry F. Byrd	Harold E. Stassen
Thomas E. Dewey	Robert A. Taft
William O. Douglas	Harry S. Truman
Dwight D. Eisenhower	Arthur H. Vandenberg
Gen. Douglas MacArthur	Henry A. Wallace
Joseph W. Martin, Jr.	Earl Warren

Or:.....(Write in choice)

* * *

CIRCLE YOUR PARTY PREFERENCE

Democratic
Republican
Progressive (Third Party)

Or:.....(Write in choice)

NOW . . . send this ballot to:

THE ARCHWAY, Bryant College or leave with Miss Maureen Manchester, Administration Office.

EILEEN KINGSLEY

Jack Ellsworth's Choice
Beta Sigma Chi's Choice
Should be your choice
FOR MAY QUEEN
EILEEN KINGSLEY

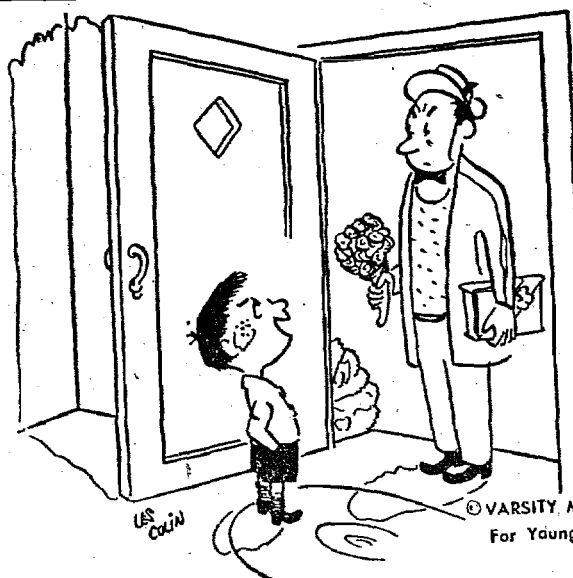
Helen Culpepper for May Queen

That's Right—Bryant's Leading Fraternity—PHI SIGMA NU—Is Sponsoring Bryant's Leading Personality—HELEN CULPEPPER—For MAY QUEEN.

Don't Forget—

To be a sure stepper, Vote for Helen Culpepper at BIB's May Queen Dance, May 22nd in the Auditorium.

Helen Culpepper for May Queen



"WELL, WELL—THE SHINING KNIGHT IN WHITE ARMOR, THE GAY LOTHARIO FROM THE WEST, THE BEAU BRUMMEL OF PARK AVENUE



© VARSITY Magazine For Young Men

"Be a little more subtle, Shanahan."