



PROVIDENCE
RHODE ISLAND

Pictorial Issue

SEVENTY-FOURTH YEAR
1863 / / / / 1937

Alumni to Take Active Part in College Social Life

The BRYANT COLLEGE ALUMNI—many thousands of whom are located throughout the United States and many of them in executive positions—will, this year, take an even more active part in the social life of the College.

Through the work of former officers of the various classes, reunions are being held. In addition, the Alumni Secretary at the College Offices, will keep accurate records showing where Alumni are now located and interesting items of their activities.

Present plans call for the establishment of a regular news sheet, published quarterly and mailed to the Alumni. This paper will keep the graduates in touch with all College activities, as well as give information about the Alumni.

Plans are being made for a Reunion, with a Roll Call of all classes. Prizes will be awarded to the Oldest Class, and to the Class having the largest percentage of members in attendance. There will be an Alumni Banquet and Dance, and the BRYANT Campus will resound with happy reminiscences.



South Hall — Administration Building and Main Study Hall

NEW TEACHER-TRAINING PROGRAM BEGINS SEPTEMBER 8

President *Announces a Four-Year
Training Course*

OPENED

THE SEVENTY-FIFTH YEAR

Strong Program of Cultural and Vocational Lectures

Prominent Educators
Talk at Bryant

Among the many advantages given BRYANT College students are the frequent lectures by prominent educators and leading business men and women.

Included in the staff of visiting lecturers during the year were: Otis E. Randall, Ph.D., Former Dean of Undergraduates of Brown University; J. Anton De Haas, Ph.D., William Ziegler Professor of International Relationships and Professor at the Graduate School of Business Administration, Harvard University; Deane W. Malott, A.M., Ph.D., Associate Professor of Business at the Graduate School of Business Administration, Harvard University; Ray Bert Westerfield, Ph.D., Sc.D., Professor of Political Economy, Yale University; Edward H. Eldridge, Ph.D., M.S.S., Former Director of the School of Secretarial Studies, Simmons College; Frank Earle Waite, A. M., Professor of History of Education and Philosophy of Education, Rhode Island College of Education; William J. Hoffman, A.B., Professor of Public Speaking, Boston University; George W. Gardiner, A. M., M. B. A., Banker and Economist; Howard J. Wischaupt, Lecturer and Sales Counsellor; Paul R. Ladd, Manager of the Retail Trade Division of the Providence Chamber of Commerce; Rufus Stickney, B.B.A., Head of the Shorthand Department, Boston Clerical School, and Instructor at Boston University; Guenn Cook, Personnel Director the Gorham Company; Ann E. Fryer, Personnel Department, Rhode Island Hospital Trust Company.

These experienced men and women brought to the students of Bryant College thoughtful and constructive ideas along vocational and cultural lines.

Bryant College will inaugurate a four-year Commercial Teacher-Training Program at the start of the Fall Semester in September. This program will meet State requirements. The Directors of Education of the States of Rhode Island and Connecticut have already approved the curriculum and the approval of the Directors of Education in other States is expected in the very near future.

Three and a half years of the four-year program will be devoted to class work. In the first semester of the senior year, the student will receive practice teaching under a State Critic Teacher in the public high schools of Rhode Island.

The Bryant faculty will be enlarged. Several additional professors, who hold

academic degrees and are experienced in training young men and women for the teaching profession, will become members.

Upon completion of the Teacher-Training Program, graduates will receive the Degree of Bachelor of Arts in Commercial Education, and will be eligible for the five-year Professional Teacher's Certificate from the State of Rhode Island.

Each year, the enrollment for this program will be strictly limited to 35 freshmen, who will be selected on the basis of approved scholastic standing, satisfactory personality, and sound health. Each candidate for admission must have the recommendation of a high school principal or senior-class student adviser.

Early Reservations for Girls' Dormitory Are Advisable

Reservations for BRYANT Hall arrive early. Because of the advance registration, it will be wise to insure a place and avoid delay or disappointment.

The demands for reservations in the College's other supervised dormitories have greatly exceeded the rooms available. Plans are under way to acquire a new dormitory within two minutes' walk of the campus. This new dormitory, temporarily, will help solve the housing problem for the many students coming from other cities and states.

The Campus Affords Relaxation

The BRYANT Campus, attractively landscaped with towering old elms, is an inviting spot where the under graduates gather. Rustic benches have been placed about the Campus, and in good weather members of the student body take advantage of a few minutes' relaxation, under ideal conditions.

During the winter months, the students find ample facilities for relaxation and enjoyment in Stratton Gymnasium, adjoining the Cafeteria.

Students from Wide Area Enrolled at Bryant

The Student Body at BRYANT for the year 1936 represented practically every section of the United States.

The South is well represented by students from Virginia, North Carolina, Florida, and Alabama.

The Middle West is represented by students from Michigan, Minnesota, and Illinois.

The New England States, New York, and New Jersey have contributed, as always, large numbers of students.

The student coming from the longest distance is, as in 1936, from the Panama Canal Zone.

Air Conditioning Given Test in South Hall

The General Electric Company has installed three air-conditioning units in one of the large classrooms in South Hall. Other rooms will be so equipped in the near future.

Although Bryant College is located in an exclusive residential section of Providence providing good air and light, the college officials are quick to install added improvements where the comfort and welfare of the students are concerned.

752 Calls from Employers in 1936

Number of Personal Calls
Increases

Statistics for 1936 compiled by the Bryant Placement Service Bureau show a substantial increase over the number of calls received during 1935. In 1935, the Bureau received 651 calls, an increase of exactly 100 calls over the number received in 1934. In 1936, seven hundred and fifty-two calls were received, 101 more than in 1935, and 201 more than in 1934.

The establishment of the BRYANT Placement Bureau in its own quarters on the northwest corner of the Campus, at Hope and Benevolent Streets, has eliminated parking problems and made possible more personal visits by employers. Convenient and improved facilities have assisted greatly in increasing employment opportunities for graduates.

Recently, Placement Director, Harold D. Ripley, made a careful survey of diversified business offices in New England and adjacent territory to study their personnel needs and requirements. Active placement service and intelligent selection of candidates have helped to build a preference for Bryant graduates by leading employers.

New Laboratory of Business Practice Installed

BRYANT College, anticipating the ever increasing modern trends of up-to-date business offices, has installed a new and complete laboratory for training in office practice. This new feature requires six weeks of intensive work in a laboratory which is a reproduction of a modern office environment, managed by trained and experienced office supervisors and instructors and conducted along regular routine office hours from 9:15 A. M. to 5:00 P. M.

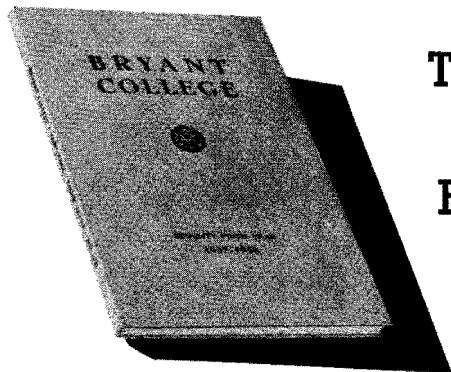
The thorough training in the operation of office machines, the knowledge of office routine and management, which the new laboratory will provide, will give students the finishing touch of practical application of business training to actual office work, and prepare them to meet the demands of employers, seeking capable experienced office assistants with capacity for responsibilities.

Expansion of the College Library

During the past year many volumes have been added to the College Library either by purchase or through donations of individual Alumni, Alumni Library Funds, and President Jacobs.

The Library, previously restricted to books relating to business, now contains, in addition, many volumes pertaining to Education, History, and General Literature.

Easily accessible, on the college campus, the Library is a source of valuable information and used frequently by the students for reference and research purposes.



The Seventy-Fifth Year Catalog of Bryant College is Now Ready

Illustrated scenes of college life and class day exercises, and full descriptions of the college programs and general information of interest to young men and young women entering upon a business career are contained within the pages of this new catalog. Numerous requests for copies have been received from high school principals, instructors, and high school graduates. A request incurs no obligation, but is complied with promptly whether through personal call at the college offices or by telephone or mail.

Address all correspondence to Bryant College, Providence, Rhode Island.

Fall Registration Already Under Way

Degree Courses Popular

Reservations for September entrance have started. Mr. E. Gardner Jacobs, Vice President and Director of Admissions of BRYANT College, looks for another early registration period due to the limited enrollment policy in force at BRYANT.

Because of the full enrollment in the Freshmen Degree Classes last year the returning Seniors this year will far outnumber last season's returning upper classmen. This will further limit the incoming Freshmen and One-Year Program groups.

The past few years there has been a decided trend toward the degree courses, primarily because of the more complete programs and also because of the superior positions attainable.

Bryant Offers Summer Courses

Summer School at BRYANT this year will open July 6 and run for six consecutive weeks.

Convenient hours, 9:15 a.m. to 1:15 p.m., five days a week allows students to take advantage of nearby facilities for recreation and study.

Dormitory facilities are available for out-of-town students. Bryant Hall for young women is within easy walking distance of the Campus. Young men may find boarding accommodations in the College dormitories for men or supervised student homes.

Among those attending Summer Courses at Bryant are High School Graduates, College and University men and women, High School and Grade Teachers.

The Summer School offers small group instruction, close personal attention, able teachers and splendid facilities for student progress.

Prominent Men Hold Bryant College Degrees

Many men, high up in public office, or distinguished for achievements in business or the professions, are included in the list of Bryant College Honorary Alumni. Honorary Masters Degrees have been conferred at Commencement upon the following:

HONORABLE FELIX HEBERT, former United States Senator from Rhode Island.

HONORABLE OGDEN L. MILLS, former Secretary of the Treasury of the United States.

HONORABLE DANIEL C. ROPER, Secretary of Commerce of the United States.

DR. FRANCIS BOWES SAYRE, Assistant Secretary of State of the United States.

HONORABLE JESSE H. METCALF, former United States Senator from Rhode Island.

DR. JOHN DICKINSON, former Assistant Attorney General of the United States.

MR. HENRY FORD, Chairman of the Board, Ford Motor Company, Dearborn, Michigan.

DR. CHARLES CARROLL (deceased), Chief of the Division of Promotion and Supervision of Education of the State of Rhode Island.

MR. JOSEPH H. APPEL, a Member of the Board of Directors of John Wanamaker, New York.

DR. EDWARD H. ELDRIDGE, former Director of the School of Secretarial Studies, Simmons College, Boston, Massachusetts.

DR. JOHN ROBERT GREGG, President, The Gregg Publishing Company, New York, N. Y.

MR. GEORGE W. GARDINER, Banker and Economist, Providence, Rhode Island.

MR. EVERETT E. SALISBURY, Agent and Manager of the Atlantic Mills, Olneyville, R. I.

HONORABLE IRA LLOYD LETTS, former Judge of the United States District Court, Providence, R. I.

HONORABLE CHARLES CURTIS, (deceased), former Vice-President of the United States.

DR. JOHN O. MALOTT, Specialist in Commercial Education, Office of Education, Department of Interior, Washington, D. C.

HONORABLE FREDERICK S. PECK, Industrialist, Banker, and former Finance Commissioner of Rhode Island.

COLONEL G. EDWARD BUXTON, Chairman of the Board, B. B. & R. Knight Corporation, Providence, R. I.

HONORABLE WILLIAM R. CASTLE, former Under Secretary of State of the United States, Washington, D. C.

CAPTAIN WILLIAM MCGREGOR, Vice-President, Blackstone Valley Gas and Electric Company, Pawtucket, R. I.

COLONEL JOSEPH SAMUELS, President of the Outlet Company, Providence, R. I.

MR. JAMES E. THOMPSON, President, Phenix National Bank, Providence, R. I.

MR. EVERETT W. WHITFORD, President, Centerville National Bank, Centerville, Rhode Island.

New Location of Bryant College Proves Popular as Enrollment Increases

The substantial increase in the student body indicates that the new location is proving popular, and one very important feature of this fact is the ample parking space provided for the many students who commute daily, not only from all parts of Rhode Island, but also from nearby towns and cities in the neighboring states of Massachusetts and Connecticut. The present location is within walking distance of the business center of Providence, but away from that congested area known as "downtown."

The new buildings and campus are attractively located in the midst of the city's most exclusive residential district. Nearby is Brown University and the Rhode Island School of Design, while easily accessible from the Bryant campus are famous libraries and historic shrines, rich in the tradition of New England culture. This dominating location insures pleasant vistas, fine air and strategic convenience.

Dormitory Life Popular at Bryant Hall

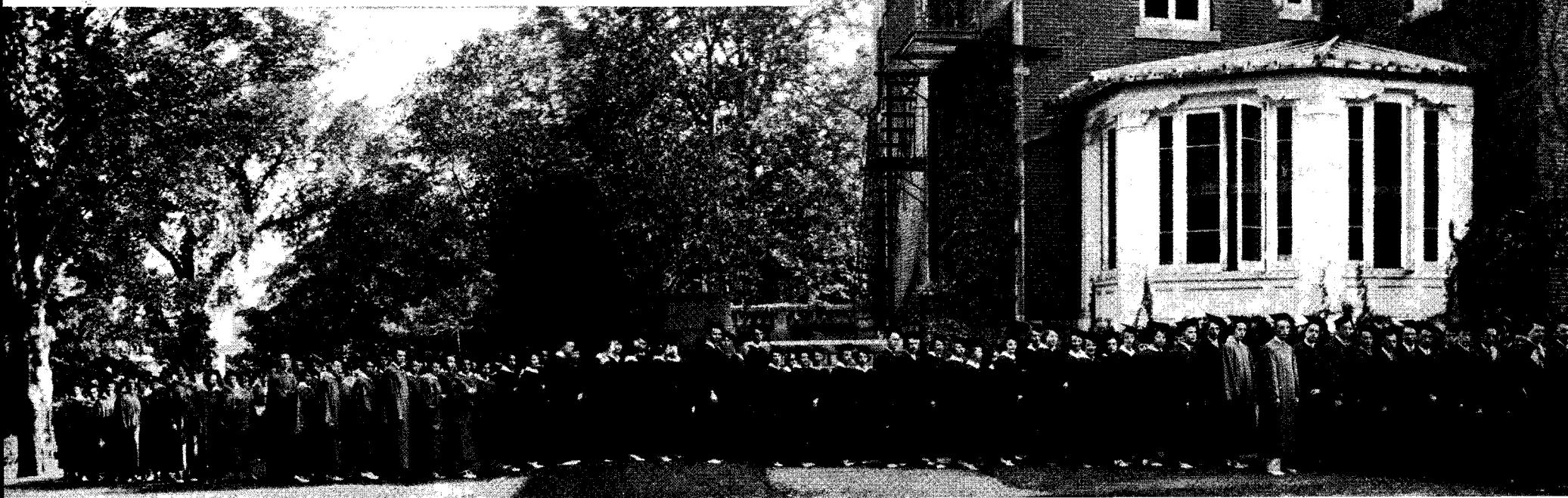
Many cordial letters have been received from Alumni during the past few months. Among them are the letters from graduates who formerly lived at BRYANT HALL. Counted among their most pleasant memories are the hours spent at the Hall.

Friendships formed among the young women, by daily contacts and at the pleasant social affairs, make a valuable contribution toward a well-rounded college life.

Years go by, names on the roll change, but every year brings to the old "Hall" new students who help liven up the evenings with songs and stories. They, in turn, become "Old Grads" who go out into the world mindful of the happy days and good times at BRYANT Hall.

Basketball is
a Major Sport at Bryant

(below) Class Day Procession Across Bryant Ca



LETTERS OF CONGRATULATION TO PRESIDENT JACOBS

From
HONORABLE FRANCIS B. SAYRE,
*Assistant Secretary of State
of the United States*

Dr. Henry L. Jacobs, President,
Bryant College,
Providence, Rhode Island.

My Dear President Jacobs:

You are engaged in a great work and I want to send you a word of Godspeed as Bryant College moves into its new home. I know that the dedication of the beautiful new buildings will also mark a re-dedication of Bryant College itself to high ideals and new endeavor.

We, on the firing line, realize particularly the crucial nature of the problems which America will be grappling with during the next decade or two. It is of very vital importance that our institutions of learning realize and prepare for this need.

Their function is to do more than impart knowledge. They must inspire their students with an understanding of life,

with a fire to serve country and humanity, with an unconquerable faith in the goodness of God.

May the new Bryant College become great through the devoted lives of its students!

Sincerely yours,
FRANCIS B. SAYRE.

From HONORABLE OGDEN L. MILLS,
*Former Secretary of the
United States Treasury*

New York City

Dear President Jacobs:

I want to congratulate you and the College on acquiring a home of its own. It is very gratifying to know that a more adequate physical plant will enable the College to carry on even more effectively the all-important task in which it has been so successfully engaged for many years.

With all good wishes,
Faithfully yours,
OGDEN L. MILLS.

Bryant Musical Clubs Have Busy Schedule

The Musical Clubs of BRYANT, including the Concert Orchestra, Men's Glee Club, and Women's Glee Club are busily engaged preparing for their Annual Concert.

At the Christmas Assembly, there was a splendid program of songs by the combined Men's and Women's Glee Clubs under the direction of Mr. Elmer W. Smith, Director of the Providence Treble Choral Club. There were also selections by the Bryant Concert Orchestra under the direction of Professor Ralph Handy of the faculty.

A Musicale, in which the three clubs will appear and contribute single and combined selections, is being arranged for an early date in April.

The Musical Clubs have one of the most active programs at BRYANT.

Regular weekly rehearsals are held and the Orchestra plays for the biweekly College Assemblies. The calendar of activities also includes the Annual Spring Concert and music for the Class Day Program.

At the final Assembly, the Musical Clubs' Awards are made in recognition of the loyalty and musicianship of the members honored.

Exceptional ability is no requisite for membership in any of the Musical Clubs. If you have a fair singing voice or can play an orchestral instrument with a fair degree of proficiency, make the Musical Clubs a part of your College life.

*The Campus is an
Inviting Prospect Between Classes*

Stratton Gymnasium a Busy Center of Interest

The popularity of Stratton Gymnasium exceeds all expectations. It is a center of constant activity where a well-balanced schedule is carried out to provide recreation, athletics, social and cultural training for the students.

Among the activities, that take up a goodly portion of the time allotted, are the Lectures and Assemblies, Varsity Basketball for the young men and for the young women, Interclass Basketball, Volley Ball, rehearsals for the Men's and Women's Glee Clubs, rehearsals of the BRYANT Concert Orchestra, and the dances that take place, at intervals, throughout the year.

Professor Henry J. Lee, Associate Dean of Bryant, Named State Budget Director

On January 9, his Excellency, Governor Robert E. Quinn of Rhode Island, announced the appointment of Professor Henry J. Lee, Associate Dean of the School of Business Administration of Bryant College, as State Budget Director for a term of two years.

Professor Lee has been associated with the College during the past fifteen years. He was educated in the Pawtucket Public Schools and La Salle Academy in Providence, graduated from Holy Cross College with the Degree of Bachelor of Arts, and furthered his studies at Bryant College pursuing the Business Administration and Accountancy Program for the Masters' Degree in Business Administration. Professor Lee is a member of the American Institute of Accountants, The

Rhode Island Institute of Certified Public Accountants, and is past President of the Providence Chapter, National Association of Cost Accountants.

The members of the Executive Board and Faculty of Bryant College regret his departure, but feel that the State of Rhode Island is indeed fortunate in securing a Budget Director who possesses every qualification necessary for that exacting office.

When Professor Lee entered upon his new duties on the eighteenth of January he found himself among friends, for his Assistant Budget Director was Mr. Arthur Burton, C.P.A., Bryant Graduate, and his Office Manager, Mr. Charles Hill, a Graduate from the School of Secretarial Science of Bryant College.

Providence Delightful City in Which to Study

Providence is attractively situated at the head of Narragansett Bay on whose shores are many famous resorts. It is within thirty miles of Newport, the social capital of the country during the summer months and one of the nation's most famous yachting centers. Known as the gateway of Southern New England, Providence is its second largest city. In population it is exceeded only by Boston, between which city and New York it is conveniently situated.

Educational Center

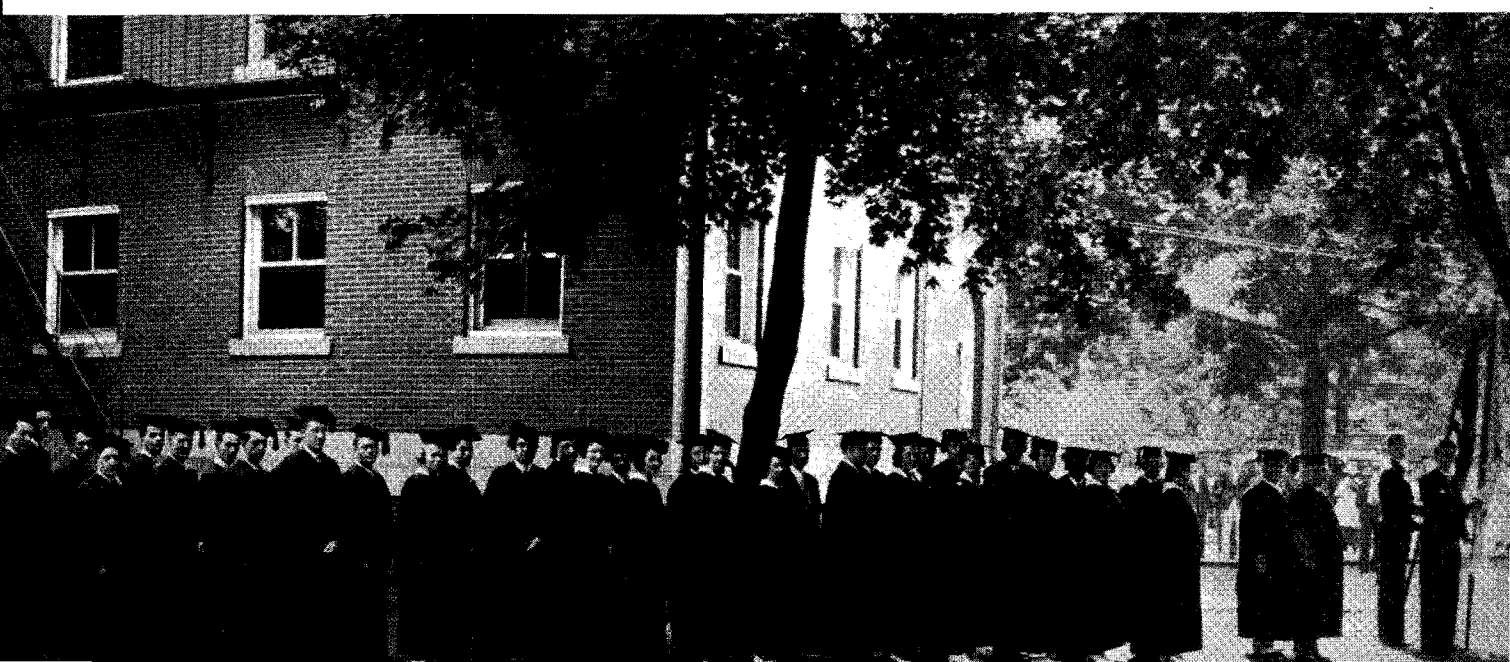
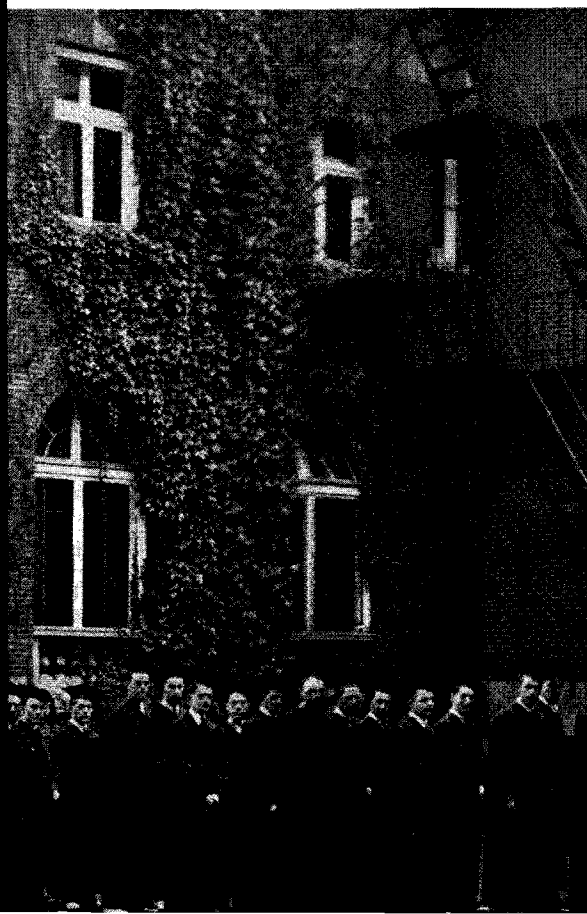
Providence, founded in 1636, is a university city with the prestige and intellectual advantages that naturally pertain to an educational community; it is a city of homes with pleasant social life and friendly intercourse. The student's life in Providence is a happy and safe one.

Home of Industries

The city of Providence, in addition to being a center for woolen and cotton goods, is a large manufacturing jewelry point and famed throughout the world in the manufacture of silverware, fine precision machines and small tools. It is also a great retail shopping center. Students at Bryant College are thereby afforded enviable opportunities for field work and first hand observation in many branches of business and, incidentally, for placement upon the completion of their studies.

Pleasant Environment

Providence, in short, is large enough to afford students the advantages of metropolitan life, yet not so large as to submerge the individual and subject him to that loneliness which so often affects young people away from home in a larger city. The public safety, the health and orderliness records of Providence are conspicuously high, and there is an enviable atmosphere of neighborliness and freedom from subversive influences.



Bryant Class of 1936 Reaches an Outstanding Employment Record

85% of Graduating Class Already Employed

OVER 212 young men and women of the August 1936 graduating class are now "on the way up" in preferred positions representing diversified business activities not only in New England States, but in many other states.

SPACE allows only a few of the graduates' photographs to be shown on this page. Many others are on file at the BRYANT PLACEMENT SERVICE BUREAU, an active force for the promotion of Bryant graduates.



PRISCILLA HENTZ
East Providence, R. I.
Stenographic-Secretary
Balfour, Johnson & Nichols
Company
Providence, R. I.



MADLINE BROWN
Tiverton, R. I.
Secretary—Interstate
Insurance & Finance
Company
Tiverton, R. I.



IRVINE BROADBENT
Lonsdale, R. I.
Secretary to Personnel
Manager—Universal
Winding Company
Auburn, R. I.



M. ELIZABETH
SANFORD
Litchfield, Conn.
Secretary—Connecticut
Milk Dealers Association
Hartford, Conn.



THOMAS MORAN
Jericho, Vt.
Stenographic-Secretary
Foxon Company
Providence, R. I.



ELMINO MALLOY
Central Falls, R. I.
Secretary—R. I. Inspector
of O.C.C. Camps
Providence, R. I.



CLAIRE M. JACK
Pawtucket, R. I.
Secretary—Haskett
Manufacturing Company
Pawtucket, R. I.



WESLEY CRAWLEY
Fall River, Mass.
Accountant—Pacific Oil
Company
Fall River, Mass.



FLORENCE O. LESTER
Pawtucket, R. I.
Stenographic-Secretary
Industrial Trust Company
Pawtucket, R. I.



WILLIAM E. FROST
West Palm Beach, Fla.
Salesman—Burroughs
Adding Machine Company
Providence, R. I.



PHYLLIS FRECHETTE
Pawtucket, R. I.
Stenographic-Secretary
Crescent Cable Company
Pawtucket, R. I.



DOROTHY GLOVER
Cranston, R. I.
Stenographic-Secretary
Respro, Inc.
Auburn, R. I.



M. SYLVIA RINDELL
Westerly, R. I.
Stenographic-Secretary
George C. Moore Company
Westerly, R. I.



HOPE PIZER
East Providence, R. I.
Secretary—Mays
Manufacturing Company
Providence, R. I.



LIONEL ODUMIER
East Providence, R. I.
Secretary—Sun Oil
Company
Providence, R. I.



GLADYS GAGNON
Northampton, Mass.
Stenographic-Secretary
Decorative Fabrics
Company
Pawtucket, R. I.



RALPH A. PAINE
Dexter, Maine
Teller—Morris Plan
Company
Providence, R. I.



FRANCES HEWSON
Providence, R. I.
Secretary to Advertising
Manager—David Rubber
Company
Providence, R. I.



KATHERINE HERAN
Providence, R. I.
Stenographic-Secretary
Capital Stationery
Company
Providence, R. I.



ALMOND L. NICKERSON
Eastham, Mass.
Accountant—Keppers
Products Company
East Providence, R. I.



RUTH WILLIAMSON
Somerset, Mass.
Stenographic-Secretary
Union Mutual Fire
Insurance Company
Providence, R. I.



WILLIAM E. BAKER
Providence, R. I.
Investigator—General
Motors Acceptance
Corporation
Providence, R. I.



JOYCE ROWELL
Pawtucket, R. I.
Secretary—Commercial
Credit Corporation
Providence, R. I.



CLARENCE JARVIS
Waterbury, Conn.
Accountant—Conrad
Manufacturing Company
Pawtucket, R. I.



JOHN F. MCGOVERN
Providence, R. I.
Accountant—Henry
Barward School
Providence, R. I.



MARGARET E. FOX
East Providence, R. I.
Secretary—The Ciba
Company
Providence, R. I.



GRACE ANDREWS
Shelton, Conn.
Stenographic-Secretary
Citizens Savings Bank
Providence, R. I.



DONALD E. WEIGOLD
Bellevue, Canal Zone
Secretary—New England
Transportation Company
Providence, R. I.



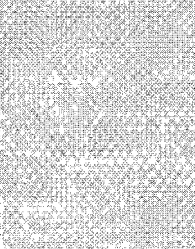
GERTRUDE BOSWORTH
Warren, R. I.
Stenographic-Secretary
Starkweather & Shepley,
Inc.
Providence, R. I.



JOHN SHEPARD
Edgewood, R. I.
Clerk—General Motors
Acceptance Corporation
Providence, R. I.



RACHEL SEAVER
Waterbury, Conn.
Secretary—The Bristol
Company
Bristol, Conn.



JOHN F. MCGOVERN
Providence, R. I.
Accountant—Henry
Barward School
Providence, R. I.



CECILE LANDRY
Woonsocket, R. I.
Secretary—Mayor of
Woonsocket, R. I.



CHARLES MILLS
Jewett City, Conn.
Accountant—Aspinock
Company
Jewett City, Conn.



DELSIE BEST
Fishers Island, N. Y.
Secretary—Social Service
Department R. I. Hospital
Providence, R. I.



WALTER GAY, JR.
Leominster, Mass.
Accountant—Simonds
Saw & Steel Company
Fitchburg, Mass.



VIOLA WITIKAINEN
Hyannis, Mass.
Secretary—United Public
Markets
Providence, R. I.



EVA H. BERRY
Pascoag, R. I.
Stenographic-Secretary
Aetna Casualty & Surety
Company
Providence, R. I.



BARBARA KENNEDY
Riverside, R. I.
Secretary—American
Bitumuls Company
East Providence, R. I.



MIRIAM OLIVER
Willimantic, Conn.
Stenographic-Secretary
Travelers Insurance
Company
Hartford, Conn.



PAUL R. CONE
Providence, R. I.
Accountant—New England
Sanitarium & Hospital
Stonham, Mass.



EVA GRAHAM
Newport, R. I.
Stenographic-Secretary
Administration Office
Brown University
Providence, R. I.



ROGER LINCOLN
Houlton, Maine
Accountant—Kenney
Manufacturing Company
Cranston, R. I.



HELEN WELSH
Roanoke, Va.
Secretary—General Motors
Acceptance Corporation
Roanoke, Va.