

Bryant University

Bryant Digital Repository

Resources

Bryant University UN PRME Community

2023

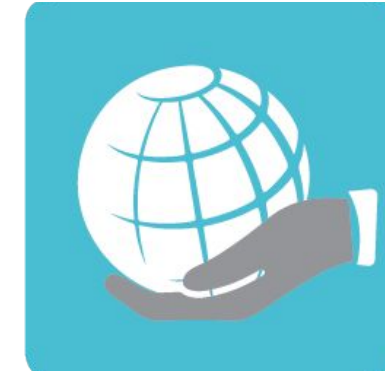
PRME Sustainable Travel and Events Guidance

PRME Global Forum

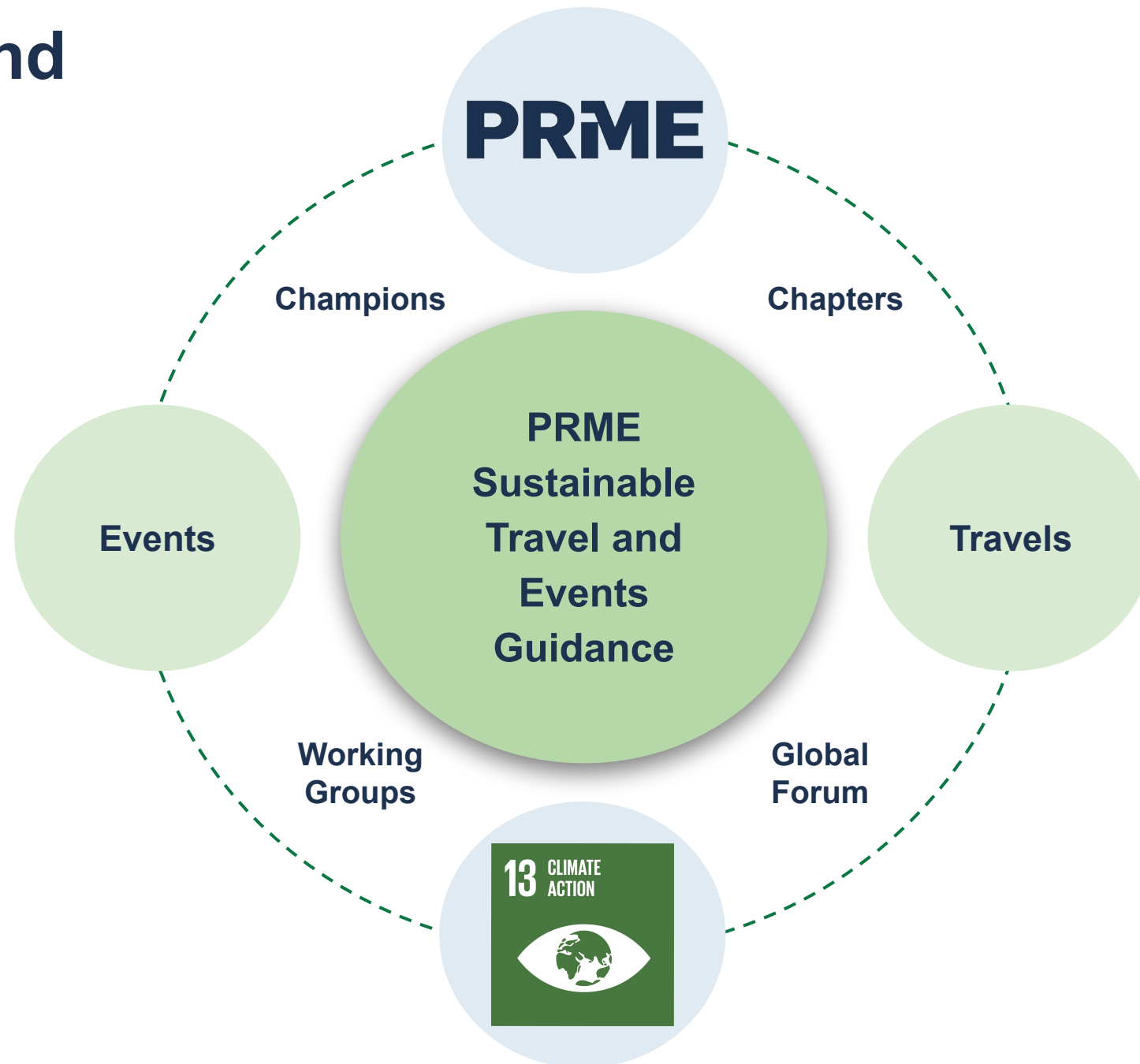
Follow this and additional works at: https://digitalcommons.bryant.edu/unprme_resources

PRME Sustainable Travel and Events Guidance

2023 PRME Global Forum



Background



PRME Climate Guidelines Taskforce

Joining global expertises to develop the PRME Sustainable Travel and Events Guidance



Petra Molthan-Hill [Co-Chair]

Co-Chair PRME Working Group on Climate Change and Environment; Professor of Sustainable Management and Education for Sustainable Development, Nottingham Business School, Nottingham Trent University (UK)



Alex Hope [Co-Chair]

Co-Chair PRME Working Group on Climate Change and Environment; Deputy Faculty Pro Vice-Chancellor and Associate Professor of Business Ethics, Newcastle Business School (UK)



Aaron Noble Durnbaugh Representative, PRME Chapter North America; Director of Sustainability, Loyola University Chicago (USA)



Jorge Andrés Rodríguez, Representative, PRME Chapter Latin America and the Caribbean; Assistant Professor at ESPAE Graduate School of Management (Ecuador)



Nisa Vinodkumar

Representative, PRME Chapter Middle East; Assistant Professor of Finance, Princess Nourah Bint Abdulrahman University (Saudi Arabia).



Brendon Munashe Mahere

Regional Leader Africa, PRME Global Students; Scholar, Mastercard Foundation (African Leadership Academy); Student, Al Akhawayn University Ifrane (Zimbabwe)

Five Fundamentals



- **Virtual First**
- **Geographic Flexibility**
- **Travel Methods**
- **Event Sustainability**
- **Continuous Enhancement**

Next Steps

Continuously improving the guidance by sharing best practices...



WEBPAGE and EMAIL

[WWW.UNPRME.ORG/SUSTAINABLE-TRAVEL-AND-EVENTS-GUIDANCE](https://www.unprme.org/sustainable-travel-and-events-guidance)

CLIMATE@UNPRME.ORG



WORKING GROUP

[WWW.UNPRMECLIMATE.ORG](https://www.unprmeclimate.org)



CONSULTATIONS

JOIN US TODAY!

PRME Principles for Responsible
Management Education

Read more about transport and food

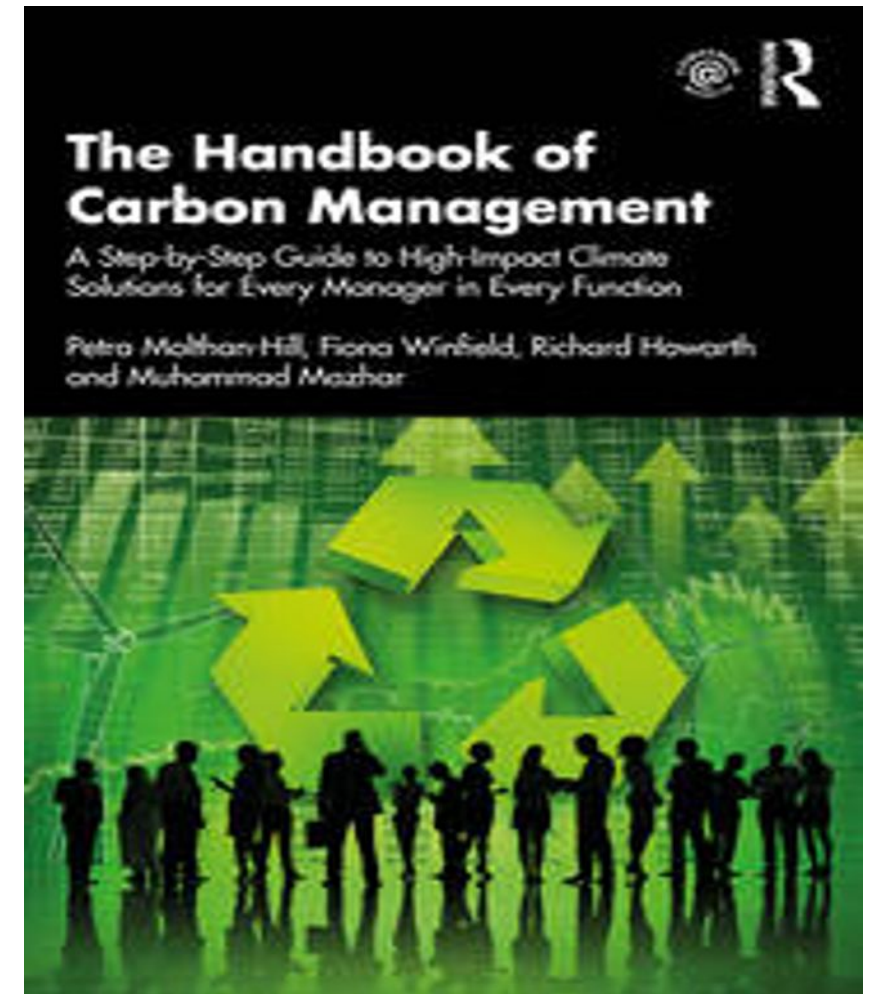
The Handbook of Carbon Management: A step-by-step guide to high-impact climate solutions for every manager in every function ([Routledge](#)).

Chapters about transport and food but also:

- Procurement and Supply: pushing the boundaries to remove carbon emissions
- Marketing for a better climate
- Pension funds, accounts and other investments
- GHG emissions accounting
- Climate communication and reporting to internal and external stakeholders

NET ZERO ON CAMPUS (SDSN)

https://irp.cdn-website.com/be6d1d56/files/uploaded/Net-Zero-on-Campus_interactive.pdf



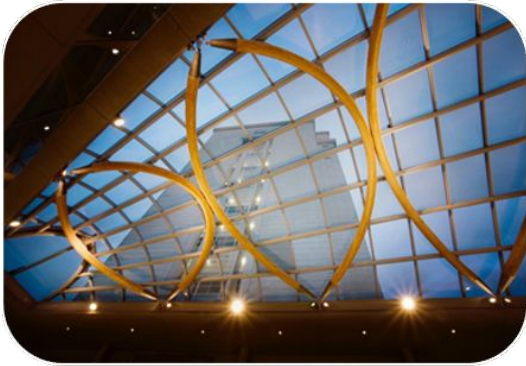
The *Climate Literacy Training*



MIT Sloan &
Climate Interactive
Simulation tool



Certificates for you
and your students



Climate change
mitigation focused
on solutions



Interactive teaching
material

Next cycle starts on
22 June 2023



REGISTER NOW!

www.unprme.org/prme-climate-literacy-training

clt@unprme.org

PRME Principles for Responsible
Management Education

Thank you!

