

Tupper Campus on Memory Hill

Bryant Given 220 Acres For Campus Site

Former Tupper Estate in Smithfield donated by Earl S. Tupper as outright gift. \$300,000 value placed on land and buildings.

"Bryant College Given 220 Acres for Campus" read the headlines in a *Providence Journal* article Tuesday morning, October 24, and thus a story begins. But the task of telling a story of a dream coming true is just where to begin. Unlike some stories, the gift of a 220-acre piece of land in Smithfield, Rhode Island, to Bryant College by Mr. Earl S. Tupper isn't going to end for many, many years.

The Tupper Campus on Memory Hill, as it will be known, was the outright gift of the former president of the Tupper Corp. of North Smithfield, plastics manufacturers. The land and buildings, located on John Mowry Road about a half-mile north of route 116, are valued at \$300,000!

Making the gift, Mr. Tupper said he wanted to avoid having the Memory Hill Farm divided into house lots. "I'd considered a lot of different possibilities for the land and none of them quite had what it takes. Bryant College is a type of school that is providing a type of education very much needed, so you sort of like to give something to a school like that," he stated.

The older of two pre-Revolutionary War houses on the farm was built in 1708. It is the Captain Joseph Mowry house and is one of the oldest in Smithfield. It was joined together in 1952 by Mr. Tupper with another house and completely restored to its original condition. All of the fireplaces and chimney rooms are newly renovated and the wide plank floors have a mellow finish respectful of their age. There are apple orchards, a barn and stables, and an aircraft hangar on the 220-acre estate.

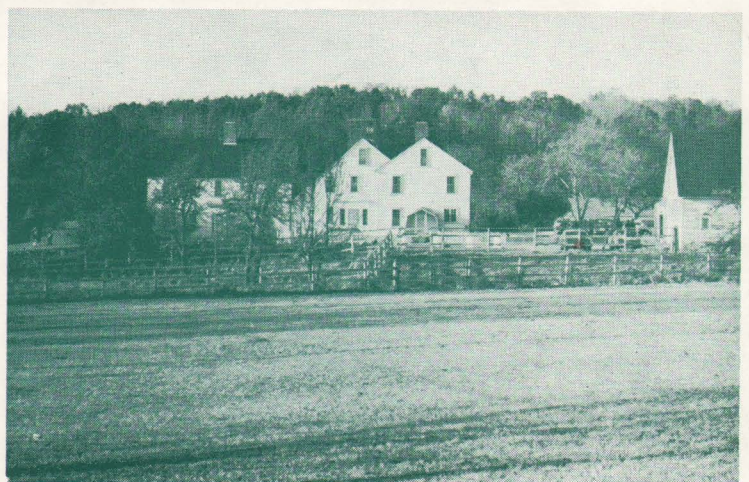


Dr. and Mrs. Jacobs take a tour around the Farm on Sunday, October 29. Faculty and staff joined in an Open House.

As the news was announced of this gift, word spread quickly among our alumni. Questions immediately arose about the use of the Tupper campus for varsity athletics, could we now have a graduate school, and would our neighboring institution, Brown University, take over our present buildings. For the present these questions must go unanswered. We just don't know.

The present campus has 32 buildings set on just over eight acres of land. *The Providence Journal* has quoted a Brown University official as saying "the news is obviously of interest to Brown, but it is much too early to determine what, if anything, Brown might do."

Bryant has catapulted from owning the least amount of college land to owning next to the most acreage for campus use in the State. It is really a dream come true! Before long you'll be "at home" at TUPPER CAMPUS ON MEMORY HILL. We know you're as happy as we that Bryant has, at last, the opportunity to grow and to show everyone that a small college can become a great college!



Memory Hill Farm — looking to the north.