

The Archway

Volume 70, Issue 5

November 1, 2002

Inside View

National News



Former VP Walter Mondale, 74, will run if nominated at Wednesday's convention. He would be replacing Sen. Paul Wellstone, who died in a plane crash on Sunday.

Page 2

Opinion

Women fight back: For the past few issues, Archway columnist has enlightened us with his girlfriend-related economic formulas, now see what some girlfriends have to say...

Page 4

Sports

X-Country is hitting the trails and preparing for their appearance in this year's NCAA Regional Championships. Also:

This weekend Bryant is hosting the Northeast-10 Tournament for Women's Soccer Nov. 2nd & 3rd

Page 5

Weekend Weather

Friday
Partly Cloudy
Hi: 48; Lo: 26



Saturday
Partly Cloudy
Hi: 39; Lo: 19



Sunday
Partly Cloudy
Hi: 36; Lo: 22



Weather from weather.com

HAUNTED HOUSE: LEGEND OR TRUTH?

By Eb Mills-Robertson
Archway News Editor

Everyone would agree that a good horror movie should have a spooky, malicious character and more than often an eerie, nightmarish setting.

The idea of 'zombies' may be a little far fetched but the combination of a zombie and a chainsaw serial killer at the box office is sure to be a hit irrespective of reality.

Bryant supposedly has its own fair share of movie making legends. Or are they more than just legends?

According to local narratives, the Amy Mowry House, which is now inhabited, by Dr. Eakin and his family is haunted.

The house was built in 1828 and was a typical Rhode Island farmhouse consisting of a large brick center chimney and "an entry with a full entablature and side lights common to Greek Revival buildings."

It was one of two farmhouses connected to the Joseph Mowry House, which was built in 1708 and now serves as Bryant's Alumni House.

Captain Joseph Mowry's House served as the first Smithfield town house. Records are not sure about his time of death, however, the property passed through several descendants till it became the property of Earl S. Tupper.

Earl Tupper donated the 220-acre land to Bryant College and the houses were preserved in accordance with the Historical Society of Rhode Island.

The house has however been redone in order to make it habitable for the Eakin family. Renovations started in May 1998 and in January 2000, the

Eakin family moved in.

The first thing you notice when you walk into the house is an imposing brick fireplace.

The house still has an 19th century colonial farmhouse theme- the original floor panels have been kept and new floor panels brought in where the original panels had rotted out.

There are thick, rough beams supporting the ceilings and a winding, compact staircase leading to the upper floor and the attic.

The furnace, which was used to make food, has been preserved but serves as their wine cellar in a sense.

Above the kitchen door is a bar and from this hangs Mrs. Eakin's dried flowers and herbs.

The attic and the basement still spoke volumes of the age of the house.

Even with the light on and in the company of Mrs. Eakin, I could not help but feel the hairs on my neck stand up straight.

The cellar was no different and I really made no attempt to walk down those stairs even though I toured the whole house.

In a sense, this sounds like the start of a horror movie. All it needs are the necessary elements to make it complete.

First of all, we need an ancient house and the Amy Mowry House is 174 years approximately. Secondly, we need a house with an uncertain history.

The house fits this exact description. There are no detailed records of who lived there and when they lived there.

The house is named Amy Mowry House and thus,

seems to be named after someone. However, after some extensive research, I came up with several women who fit this profile.

There was Amanda

sible that it was named after her. Amasa Mowry (7th Apr 1779- 3 May 1850) who could have been simply nicknamed Amy for short.

There was also an Amey I found on the Historic Rhode Island Building Data sheet (6/16/1782 -1/1/1863). She remained unmarried and was the "lass of Daniel Jr. (son of judge Daniel) and Alice Aldrich Mowry."

Intuition as well as the fact that this information was written in the corner of the Building Data sheet seems to dictate that this Amey is the right Amy we are looking for. Also behind physical plant, there is a cemetery with her tombstone in it.

Thirdly, we need a ghost and the motive of the ghost.

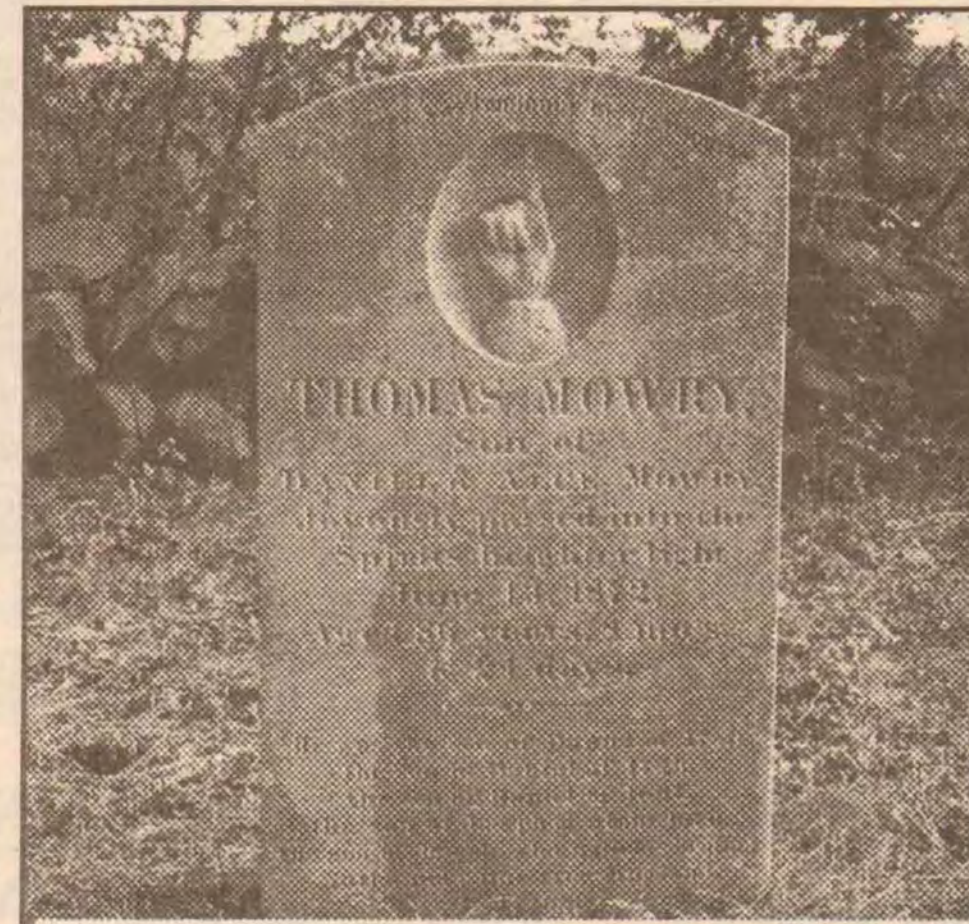
According to local legend, the ghost is a female and lives between the fireplace.

I would hazard a guess that the latter Amey would be an adequate ghost because she was unmarried and her motive is thus loneliness.

Lastly, we would need disturbing occurrences and corroborations of sightings.

The present inhabitants, the Eakin family has had its' fair share of creaks, doors slamming shut, a bat and a bird flying down the

(Continued on page 3)



Bryon Little

This is the gravestone head of Thomas Mowry, who was a former resident of the Eakin's home.

Williard Mowry who was dated as between 2nd Feb 1828- 18 Oct 1895. The house was built in 1828 and it is pos-



Photo Courtesy of Valerie Quinney

The Mowry house built in 1828 is now "Bryant's haunted house." Dr. Eakin and his wife Marge currently reside there.

Accident Leaves Student Paralyzed, Plans to Return in January

By Danielle Dunham

Bryant College senior, Keith Anderson, who last June suffered a spinal chord injury that left him paralyzed from the chest down, has a goal for this January: to return to his classes in finance at Bryant College.

He is undergoing intense physical therapy near his home in Buxton, Maine to build strength in his upper body and to regain the use of his legs.

Keith was injured on the night of June 6, 2002, two weeks after his 21st birthday.

He was riding in the front seat of a friend's truck in Buxton when it was stuck by a van which ran a stop sign.

Keith's friend, who was driving, suffered minor scratches and bruises.

According to police, the blood alcohol content of the woman driving the van was .28, three times the legal limit

Keith was rushed to the trauma center at Maine Medical Center in Portland, Maine. There he underwent surgery to save his life.

Dr. Thibodeau, the surgeon, told Keith's parents that

the surgery was a success in that he would survive. However, the doctor said, Keith would be paralyzed from the

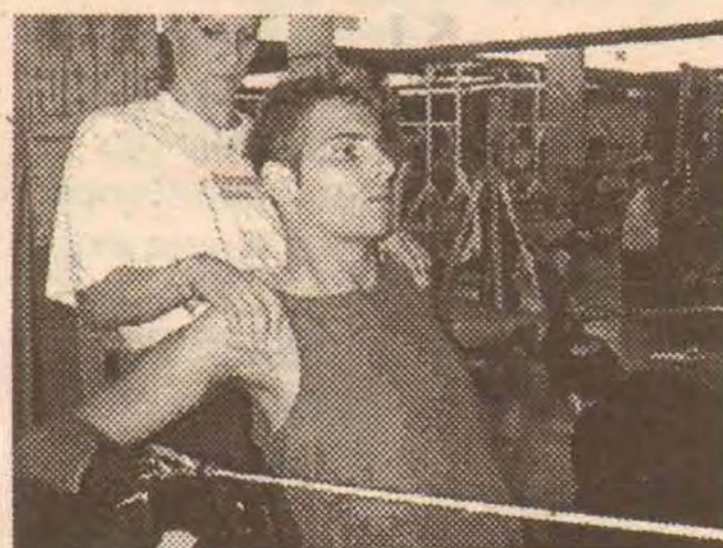


Photo Courtesy of Adaugo Nwakamma

Shepherd Center exercise specialist Suzanne Sheppard assists Keith Anderson on a weight machine. Part of Anderson's therapy consisted of two, one-hour strength-training sessions a day.

Keith spent four weeks in intensive care at the Maine Medical Center, where he battled respiratory problems and pneumonia.

For the first two weeks he was in a drug induced coma and was unable to breathe on his own.

On July 2, Keith, accompanied by his parents, was transported by air ambulance to The Shepherd Center in Atlanta, Georgia, a facility which specializes in treating spinal chord injury.

Keith said he was not eager to leave Maine Med., "I was anxious, scared and did not know what to expect," he explained. "I had grown so close to the doctors and nurses that saved my life, it was hard for me to leave them." At the Shepherd Center, Keith underwent a rigorous schedule of physical and occupational therapy.

He also took classes to learn about his injury and how to deal with it.

Overall, he says, he has done well. The staff at Shepherd, Keith says, nicknamed him "superman", because of his positive attitude and determination. Richard, a physical therapist at the Center, said Keith is one of the hardest working patients he had ever seen.

After three months of therapy, Keith regained partial movement of his upper body. This means that he can

move his arms, but the muscles in his triceps, forearm and hands are immobile. His arm motion is not fluid, he said.

Keith left the Shepherd Center on October 11th and is continuing therapy at home in Buxton.

Keith's father is certain Keith will meet his goal of returning to Bryant for the spring semester.

"Keith is a fighter and always has been," says his father, Ken Anderson, who quit his career of being a paramedic to be Keith's primary care taker.

When he returns to Bryant, Keith says, he knows it won't be totally his doing. "The support from family and friends has helped me achieve as much as I have," says Keith.

A fund has been established to help Keith and his family deal with the expenses of continued therapy, his care taking, and the remodeling of his home to fit his needs. Donations can be sent to:

The Keith Anderson Fund
Sanford Savings Bank
247 Parker Farm Road
Portland, ME 04104

U.N. Inspectors Tentatively Endorse U.S. Resolution On Iraq

By Diego Ibarguen
Knight Ridder Newspapers

Two top weapons inspectors told the United Nations Security Council on Monday that a draft U.S. resolution on confronting Iraq would allow a strong disarmament inspections, although they said some points need to be clarified.

The briefing from Hans Blix and Mohamed ElBaradei seemed to bolster efforts to push the U.S. resolution through the divided 15-nation council as it begins what is expected to be a final week of intense negotiations. Several diplomats on the council had said they would weigh the inspectors' views in deciding how to vote.

After the meeting, U.S. and British co-sponsors of the draft resolution seemed full of renewed enthusiasm. Though the pace of further U.N. negotiations remains uncertain after six weeks of talks, U.S. officials said they hope for a vote later this week.

Blix, the chief U.N. weapons inspector, and ElBaradei, head of the International Atomic Energy Agency, gave the U.S. proposal essential support. Colombian Ambassador Alfonso Valdívieso, a council member who favors a strong resolution, said Blix and ElBaradei agreed with the U.S. draft "on almost everything."

"For those who want a strong resolution, this reaffirms our belief," Valdívieso said.

Blix and ElBaradei told reporters that if the Security Council is unified behind a final resolution, that would give them greater chances of success.

"We have stressed, both of us, that just as important as clarity in the text and clarity in the mandate is the readiness of the council to uphold the resolution and the prerogatives of the inspectors, that there be no sort of fatigue in the maintenance, because then our authority will go down," Blix said.

They added that the threat of consequences for Iraqi obstruction was likely to

encourage greater cooperation from Iraq. But both men stressed that they did not want to be put in the position of deciding when Iraq had crossed the line of noncompliance.

"We will report objectively ... and it will be for the council to determine

“

We have seen it sometimes suggested that we hold peace and war in our hands...

- Hans Blix

whether something is in a material breach and if it wants to give it consequences," Blix said.

"We have seen it sometimes suggested that we hold peace and war in our hands. We decline that statement. Our job is to report. And the decision as to whether there

is war or peace is a reaction that is for the council and for its members."

According to several diplomats, Blix and ElBaradei raised a handful of specific points in the resolution's text, mostly on practical matters such as reporting deadlines and composition of inspection staffs.

The inspectors also said they wanted discretion in deciding when to remove Iraqi witnesses from the country.

Two fundamental points in the draft a stringent weapons-inspections regime and the threat of serious consequences for non-compliance have sparked sharp criticism from several Security Council members, most notably France, Russia and China.

All three, like the United States and Britain, are permanent, veto-bearing members. Though none has said it would veto the U.S.-U.K. draft, Russia and France last week informally circulated their own, less-restrictive ideas about a new Iraq resolution.

The Russian position

has been all but dismissed as too loose to be effective. But some council diplomats have said the French paper may serve as a bridge toward a broader agreement.

Asked Monday whether France had decided against a veto, a French official, speaking on condition of anonymity, said, "For the moment the mood is to try to reach consensus."

U.S. Secretary of State Colin Powell met with his British, French and Russian counterparts in recent days.

"We think we're making progress. We think we've narrowed down the differences to a few key issues," State Department spokesman Richard Boucher said Monday in Washington.

"I think there's general agreement in the council that there needs to be a strong resolution; that the stronger the resolution, the more chance we are to get some sort of compliance from the Iraqis. We've made progress, but we're not there yet."

Politicians Remember Wellstone; Speculation Focuses on Mondale as Successor

By John McCormick
Chicago Tribune, courtesy of
Knight Ridder Newspapers

Mourning Sen. Paul Wellstone remained the message for politicians of all stripes Sunday October 27th, as Minnesota residents filed into churches and planned memorials to remember their senior senator.

But political reality already was re-emerging as Republicans and Democrats began preparing for an intense, six-day campaign to follow a memorial service for Wellstone and seven other plane crash victims. Republican Norm Coleman, the former St. Paul mayor who was trailing Wellstone in the polls before the crash, spoke with reporters Sunday morning after nearly two days of public silence.

"There will be a campaign, but now is not the time," said Coleman, who waged an intense and sometimes harsh campaign against Wellstone, a two-term incumbent.

Wellstone, his wife, daughter and five others were killed Friday near Eveleth, Minn., when a twin-engine plane went down in a wooded and swampy area 2 miles from an airport runway.

Senate Majority Leader Tom Daschle, who spoke to reporters outside Wellstone's campaign office, an area that has become a public memorial, also took a small swipe at Coleman.

"I was very disappointed with the very negative tone that Mr. Coleman took in this race," Daschle said. "I just hope ... that he can refrain from being as negative as he has been."

The political heat is bound to rise as high-ranking Democrats and Republicans from around the nation descend on Minnesota to battle for

Wellstone's Senate seat amid the political chaos triggered by his death 11 days before the election.

Speculation continues to focus on former Vice President Walter Mondale, 74, who the state's party chairman said is the choice of the Wellstone family.

Mondale has remained out of the public spotlight since Friday, but party



Photo courtesy of Knight Ridder Newspapers

Senator Paul Wellstone and wife Shelia, with their daughter Marcia Markuson (center) at a fund raiser last month. Wellstone, his wife, his daughter and five others died when their plane went down in freezing rain Friday in Eveleth, Minnesota.

chairman Mike Erlandson said he's convinced Mondale will run if nominated at the Wednesday convention.

Erlandson's tone also turned more political Sunday.

"Sen. Wellstone was going to win this election. He was ahead in the polls," he said. "I don't think there should be any confusion Sen. Wellstone was going to win this election."

Daschle stopped just short of endorsing Mondale.

"He is a person who has given great strength to this state and this country," he said. "There is little doubt that the people of Minnesota and the people of our country could unite behind his leadership."

As they have since hearing word of his death, mourners on Sunday streamed to Wellstone's campaign office in St. Paul, lighting candles and leaving cards, flowers, pictures and flags along the building's brick wall.

Survivors of Moscow Siege Tell Their Stories

By Mark McDonald
Knight Ridder Newspapers

The haggard survivors, the luckiest of the hostages, are finally emerging from Moscow's hospitals with their stories harrowing tales of blood and "black widows," of gunshots and prayers and even laughter.

Their accounts reveal what actually happened last week in the theater on Melnikova Street when a gang of Chechen rebels stormed the hall and held it for 58 hours.

Their stories also answer disturbing questions about the devastating gas attack that freed some 650 hostages but also killed 116.

The siege began at 9:10 p.m. Wednesday (1:10 p.m. EDT), at the start of the second act of the hit musical "Nord-Ost." The audience numbered about 800. The 36 men dressed in camouflage; the 18 women with them were all in black, most with explosives strapped to their chests.

Later, some of the Chechen women said they were the wives of dead guerrilla fighters the black widows.

Sergei Ignatchenko, spokesman for the Federal Security Service, said the gas and the raid began when troops heard the rebels had begun executing people.

According to all hostage accounts, this did not happen. When the gas started, everything was quiet.

The raid was initially hailed as a success, but the national mood tightened when it was revealed that the death toll was 117 hostages, 116 of them, due to the gas.

Halo-lujah! Angels Win World Series

By Bob Brookover
Knight Ridder Newspapers

Somewhere in heaven, an Angel in a cowboy hat was singing Sunday night.

Perhaps Gene Autry, the late owner of the Anaheim Angels, even got together with Queen's Freddie Mercury and belted out that hit he never got to sing during his days on Earth.

You know the one: "We Are the Champions."

That's what the Anaheim Angels are for the first time since Autry made the team an expansion reality in 1961.

After staging a remarkable rally in Game 6 on Saturday night, the Angels received brilliant work from a trio of rookie pitchers and a three-run double from Garret Anderson in Game 7 on Sunday night to claim the World Series with a 4-1 victory over the San Francisco Giants.

Rookies John Lackey, Brendan Donnelly and the incomparable Francisco Rodriguez covered the first eight innings for Anaheim, holding the Giants to one run on five hits.

The Giants, who 24 hours earlier had watched a 5-0 lead disappear, remained winless in three trips to the World Series since moving to San Francisco in 1958.

Troy Glaus, whose two-run double the night before had completed the Angels' rally, was named the World Series MVP.

Barry Bonds, despite putting together one of the greatest postseason and World Series performances in history, still does not have a ring. Bonds, 38, has been to the playoffs six times.

Bonds, who went 1 for 3 on Sunday night, batted .356 in 17 postseason games and set a postseason record with 27

walks, 13 intentional and eight home runs. In the World Series, he batted .471 with four home runs and six RBIs.

He set a World Series record with 13 walks, seven intentional and posted an incredible .700 on-base percent-



Photo courtesy of Knight Ridder Newspapers

Angel starting pitcher John Lackey throws against the San Francisco Giants in the first inning of game 7 of the 2002 World Series on Sunday, October 27, 2002

age. He was on base 21 times in 30 at-bats.

Yes, the Giants definitely had the best player, but the Angels had the better team.

Lackey, with five strong innings, became the first rookie to win Game 7 of the World Series since Pittsburgh's Babe Adams in 1909.

Rodriguez, who made his major-league debut in mid-September, finished the postseason 5-1 with a 1.93 earned run average.

Veteran Troy Percival recorded the final three outs for his seventh save of the postseason. Darin Erstad clutched a Kenny Lofton fly ball in center field to end the World Series and trigger a wild red-and-white celebration.

The damage was done, and unlike the Angels the night before, Baker's team was unable to recover from its early deficit.

#1 Spring Break-Look no further! 2' free trips/free parties w/ MTV. Free meals and drinks. Hottest Destinations @ Lowest Prices: Caribbean, Mexico, Florida, Padre. Most Reliable Company www.sunspashtours.com. 1-800-426-7710

Act Now! Guarantee the best spring break prices! South Padre, Cancun, Jamaica, Bahamas, Acapulco, Florida and Mardi Gras. Travel Free. Reps Needed! Earn \$\$. Group Discounts for 6+. 1-888-THANKSUN(1888-844-6578) www.spring-breakdiscounts.com

SPRING BREAK
Largest selection of destinations, including cruises! Foam Parties, free drinks and club admissions. Rep Positions and FREE trips available. 800-231-4FUN EpicUREan.com

(Haunted...cont. from pg.1)
chimney into the house.

However, these have been no cause for alarm for them considering the fact that the Hall 4 and 5 parking lot is behind them and car doors slam shut all the time.

The creaking noises are easily attributed to the age of the house.

The only time that they heard footsteps and thought the legends might be real, they found out that it was a Public Safety officer delivering a newspaper.

In a sense, the Eakin family could be either categorized as ghost insensitive or maybe the ghost left due to Reverend Joseph Pescatello blessing the house?

According to Father Joe, 'It is common in the Christian tradition to have a house blessed in God's name.'

Thus, it was just a blessing and does not seem to have been an exorcism like most of you readers would have wanted it to be.

It is high time that the audience realize that not everything they saw in the 'Exorcist' happens in reality.

In reality, there have been experiences by others than the Eakin family. In 1970 the school had been recently constructed and the houses had been moved to an uninhabited part of campus.

In 1972, Robert Aust (the lead Physical Plant officer presently) had a spooky experience.

Bob Powers, his supervisor had sent him to fit some electrical wires in the attic in preparation for guests.

He flashed his light down the cellar since there were no lights down there and shut the door firmly. While in the attic, a door downstairs slammed shut.

No door was actually open for he had checked before

doing his work. Unlike modern doors, there were no actual knobs but fastenings so it did not click shut but rather slammed heavily. The first time, he said, "I thought some of the guys were just goofing off."

So he checked downstairs and upstairs as well and



Bryon Little

The Nichols-Mowry cemetery is located behind the Unistrukture and has 10 burials with 4 inscriptions ranging from 1848 - 1919

found no one. He then returned to his work and a few minutes later, a window slam shut. He did his rounds again just to make sure no one was playing a joke on him and returned to the attic to finish off his job.

After a little while, he heard a door slam shut.

This time, he took action. Picking up his tools, he run out of the house and returned to his supervisor to ask if he had been near the house.

His supervisor swore an oath that no one had been there apart from Bob Aust.

It was after this that he heard rumors of a suicide by hanging in that house.

Since 1972, Bob Aust

has never gone into the Amy Mowry House attic although he has worked in Bryant for 30 years and still does. In his words, "I would never go there unless I am with someone."

Haunted or not, the Amy Mowry House is where the Eakin family calls home.

When asked if they

would move if given the opportunity, the general consensus from Dr. and Marge Eakin was "No!"

In the realm of the supernatural, it is hard to have a hard and fast rule on whether the house is haunted or not.

Everyone has a different experience and in the spirit of Halloween we ask readers to visit the Amy Mowry House for an experience of their own and to help unearth a part of Bryant history that seems to have disappeared.

One thing is for certain though, the Amy Mowry House is my first stop for trick or treating this Halloween.

Chaplains Corner

By Rev. Philip Devens
Protestant Chaplain

On Wednesday mornings at 10 am to 12 noon, I am a DJ on WJMF, the Bryant College radio station.

During that time, I share with listeners a program entitled "Powerline."

It is produced by Family Net Radio of the Radio and Television Commission of the Southern Baptist Convention, located in Fort Worth, Texas.

On the week of Friday, August 30, 2002, to Thursday, September 5, 2002, "Powerline" presented a beautiful story that I would like to share with you now.

I hope that you will enjoy it. Be safe, take care, and God bless!

A little boy was spending his Saturday morning playing in his sandbox.

He had with him his box of cars and trucks, his plastic pail, and a shiny, red plastic shovel.

In the process of creating roads and tunnels in the soft sand, he discovered a large rock in the middle of the sandbox. The lad dug around the rock, managing to dislodge it from the dirt.

With a little bit of struggle, he pushed and nudged the rock across the sandbox by using his feet. (He was a very small boy and the rock was quite large).

When the boy got the rock to the edge of the sandbox, however, he found that he couldn't roll it up and over the wall.

Determined, the little boy shoved, pushed, and pried, but every time he thought he had made some progress, the rock tipped and then fell back into the sand-

box.

The little boy grunted, struggled, pushed and shoved. But his only reward was to have the rock roll back, smashing his chubby fingers.

Finally he burst into tears of frustration. All this time the boy's father watched from his living room window as the drama unfolded.

At the moment the tears fell, a large shadow fell across the boy and the sandbox. It was the boy's father.

Gently but firmly he said, "Son, why didn't you use all the strength that you had available?"

Defeated, the boy sobbed back, "But I did, Daddy, I did! I used all the strength that I had!" "No, son," corrected the father kindly. "You didn't use all the strength you had.

You didn't ask me." With that the father reached down, picked up the rock, and removed it from the sandbox.

You know our lives can resemble this little guy in the sandbox. We can have troubles and roadblocks that really get us down. Things we just can't handle by ourselves.

And we just let them happen or try to cope with them without asking for help from Our Father...God.

It's so amazing how prayer and communication with God can give us all the strength and wisdom we need to handle any problem we face in life.

It's so easy. It's free. And it can be life changing. So, the next time you can't move a big rock in your sandbox of life, ask God to help you move it.

U.S. Response to Global Terrorism: The World After 9/11

Speaker:

Professor Terrence Hopmann

Director of Watson Institute's Security Program
at Brown University

Thursday, November 7, 2002

2:00 pm

Room 244, Unistrukture

For more information contact:

Professor Glen Camp ext. 6246 - WACRI ext. 6711

New Psychology Course

Title: Physiological Psychology PSY 374

Pre-req: Intro to Psychology PSY 260

Mode of Thought: Social Science

Course Pending Final Approval

Offered Spring Semester '03 on Tuesdays/Thursdays 12:30-1:45pm

Instructor: Joe Trunzo, Ph.D.

Learn about the following:

- How your brain and nervous system affect your behavior
- The science behind the mind/body question
- physiology & psychological disorders

For more info contact Dr. Trunzo @ ext. 6570 or email jtrunzo@bryant.edu

Announcement: Annual Faculty, Staff and Administration Children's Halloween Party

Sponsored by Greek Life

*Greek Life will be hosting the annual Halloween Party for the children of all Bryant College faculty, staff and administration on Sunday November 3, 2002 in the Bryant Center from 12-3pm.

*The party will be held in room 2A/B and will feature the following: Magician (performance at 1pm), face painting, coloring contest, costume contest, activities, food and prizes.

The Halloween Party is always a fun event for your children-No RSVP required.

Any questions contact the Greek Life Office at ext.

6199

HAVE YOU HEARD?

COPY MACHINE AVAILABLE FOR STUDENT USE IN
SUPPORT SERVICES
.05 WITH YOUR ID
.10 COIN

2ND FLOOR
UNISTRUKTURE

Tune into Bryant
College Radio

WJMF

88.7 FM

Request Line

401.232.6150

Opinion

Editor's Comments

With almost 4 years of a business school education under my belt, I feel I have been made aware and as to what a liability is in business. In addition, whenever there is the mention of liabilities, there tends to be a reference made to some sort of asset.

My question is: When did the student body become a liability to Bryant rather than the asset that they have always led us to believe that we are?

Let me clarify. As someone who is involved on campus, and knows a lot of other people who are, I have become increasingly aware of the hurdles that this school makes students, clubs and organizations jump over.

As a senior, I have had the chance to see this campus go through many changes over the past few years. Although I do believe that many of them are positive, I feel that the campus atmosphere has taken a turn for the worse as of late.

The following are just a few examples of issues that I have been made aware of that have contributed to my writing this editorial.

There have been issues with chaperones being needed for trips this year, when it was never a requirement in the past. I am sorry, but I didn't realize this was high school. The mere fact that we are at college in itself almost makes the idea silly.

In addition, sometimes it is very difficult to find someone whom the school deems "appropriate" and this in turn jeopardizes the ability to offer trips for students.

The guest policy which has become increasingly more restrictive over the past few years, is another issue. There has been discussion heard around campus that no guests will be allowed for spring weekend activities.

For me, this seems not only extreme, but also completely unfair. How can the school tell me that I am not allowed to have visitors? This is neither prison nor re-hab. And the mere fact that this is even being considered is ridiculous.

It seems that more and more this school is so concerned with image that it has lost its focus: The students- who live here and who pay large sums of money in the name of education.

There seems to be a feeling on this campus right now that the administrative fist is closing around us tighter and tighter, and I am at a point where I am becoming increasingly concerned about the direction that this college is heading in.

The lack of trust and respect that students receive on this campus is disheartening to me. Myself, and many others have been told by DPS that we are not allowed to socialize in the gazebo area of the new townhouses late in the evening, despite the fact that we have every right to be there as students and residents, and were not in possession of alcohol. If I wanted constant supervision, or wanted to get yelled at, I would have stayed at home and lived with my parents.

Colleges need to have rules and policy, but lately I have felt that things are being taken away with very little given back in return. The new buildings are fantastic, but don't use them as a shield to hide behind when you try and take away basic freedoms that we as students have enjoyed in past years.

The new alcohol policy, stricter guest policies, restrictions on who must be present on a trip, these things happened with very little, or sometimes no student input. And though they may seem like no big deal individually, as new rules and stricter policies increase, the feeling that Bryant trusts us as students and as adults lessens.

My years at Bryant have been wonderful ones, so it is extremely frustrating to myself and others that the community atmosphere that we came here to experience is disappearing.

To the administration and those responsible for our well-being as residents, ease up a little and start realizing that we are your asset, we are not a liability that needs to be controlled.

The Economics of Having a Girlfriend: Birthday Presents Part 3



By Tom Fischetti
Archway Columnist

As promised in last issue's column, this week we will conclude our discussion of the potential loss minimization equation.

Through our understanding of the equation applied by the female in the birthday present purchasing process, RP , P_r , and A_r , an equation can be derived that effectively eliminates the majority of the inherent risk associated with the outflow for the girlfriend's birthday present.

More specifically, the potential loss minimization equation (PLME) is expressed as:

$$PLME = P_r (15\% \text{ of Semester Beverage Fund}) + (A_r + RP)$$

The first apparent sim-

ilarity between the equations used by each gender manifests itself as the percent of funds allocated towards the purchase.

And although discrepancies in the Semester Beverage Fund and Semester Shopping Fund will distort this part of the outlay, let us assume that the social classes of each member of the relationship are relatively similar.

The second component employed in each equation, A_r , remains a significant variable in not only this equation but in all exchange processes associated with conventional heterosexual dating.

Now, based on our understanding of the analogous factors composing each equation, we can justify the significance of the addition of P_r and see how its presence should adjust our financial outlay by the value of RP .

As discussed in Birthday Presents Part 1, RP is applicable only to males because the girlfriend possesses the innate ability to unfairly "position" herself out of any trouble she may find herself in.

Although understood and accepted by the male, this same "get out of jail free card" has been excluded from his situation.

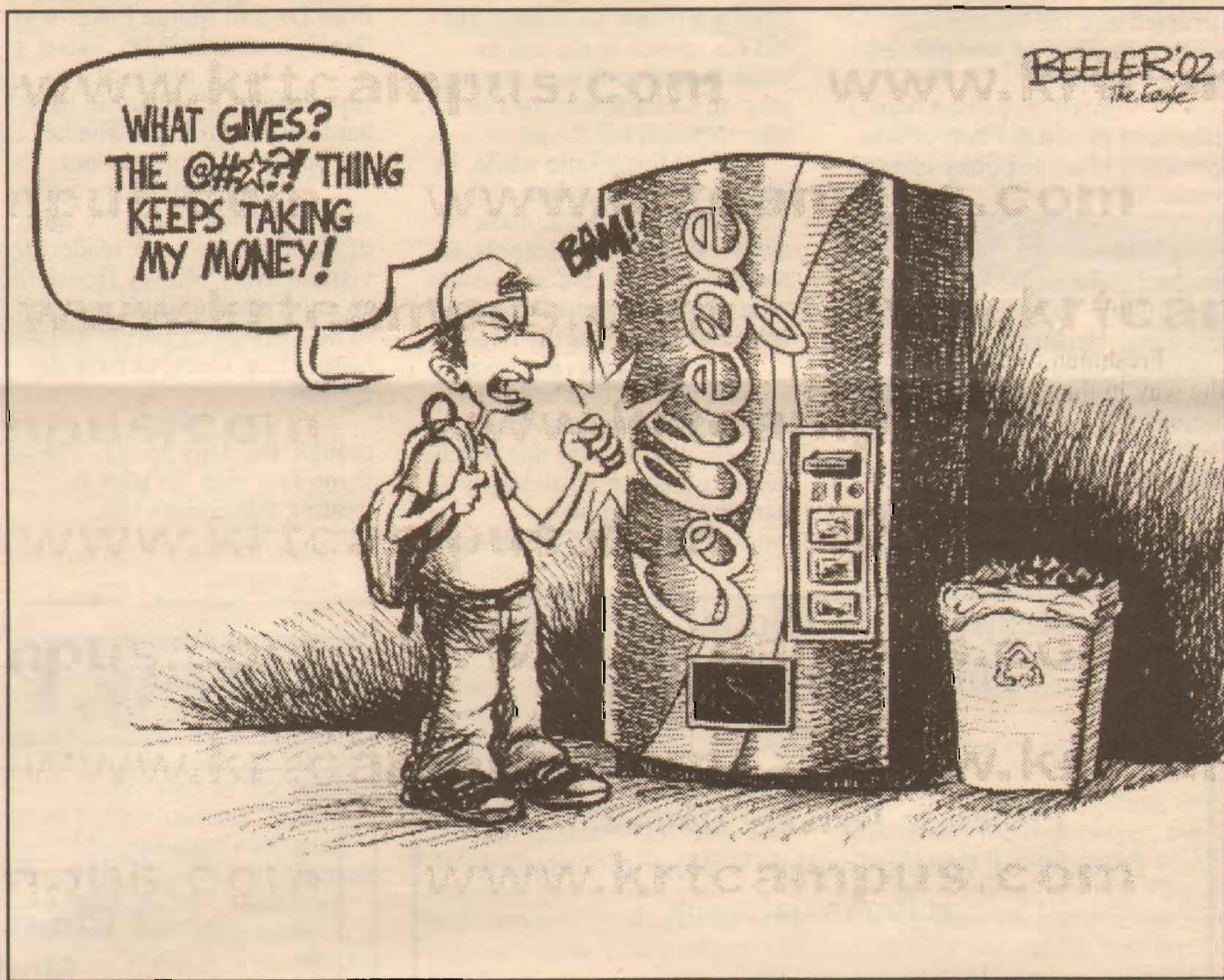
Consequently, RP will always increase the amount of financial resources the male must allocate in any purchasing decision.

However, by including P_r and its inverse relationship to RP , the 15% of our Semester Beverage Fund can be adjusted accordingly to reflect the general condition of the relationship...here's the logic.

A relatively high RP should be associated with a low P_r ; a boyfriend consistently in trouble with his girlfriend is certainly indicative of an unhealthy relationship that should not be in existence much longer.

Therefore, as P_r decreases in value, the 15% of our Semester Beverage Fund will also become smaller.

This decline should be proportionate to the increase in the outlay caused by RP and should yield a value that accurately conveys the minimum



The Archway

STAFF

Maggie Grace
Editor-In-Chief

News Editor: Ebenezer Mills-Robertson

Sports Editor: Chris Ludwiczak

Variety Editor: Justin Setter

Photo Editor: Jen Ptaschnik

Staff: Elaine Chrzan, Tom Fischetti, Shana Geer, Keith Hanks, Bryon Little, Farai Mbigi, Tim Watt

Business Manager: Brian Davis

Ad Manger: Bonnie Parker

Distribution: Rich Hurley

Advisor: Mike Thorp

CONTACT INFORMATION

The Archway
Bryant College, Box 7
1150 Douglas Pike
Smithfield, RI 02917

Location: Bryant Center, 3rd floor

Phone: (401) 232-6028

Fax: (401) 232-6710

E-mail: archway@bryant.edu

Guidelines for Comment...

We welcome your comments and submissions on editorials, articles, or topics of importance to you. Only letters including author's name, and phone number will be considered for publication (phone numbers will not be printed, they are for verification purposes only).

Letters to the Editor of 300 words or fewer will have the best chance of being published. Also, except in extraordinary circumstances, we will not print submissions exceeding 500 words. All submissions are printed at the discretion of the newspaper staff. *The Archway* staff reserves the right to edit for length, accuracy, clarity, & libelous material.

Letters and submissions must be submitted electronically.

Bryant College community members can email submissions to: archway@bryant.edu. Letters and articles can also be given to *The Archway* on disk. They can be left in *The Archway* drop box on the third floor of the Bryant Center or disks can be mailed through campus mail to box 7.

The deadline for all submissions is by 5 p.m. on the Monday prior to publication (for a complete production schedule, contact *The Archway* office). Late submissions will be accepted at the discretion of *The Archway* staff and more than likely will be held until the next issue.

Rebuttal: The Economics of Being a Girlfriend

By Alicia Rurka, Melissa Hermanns, Mary Kelley, Samantha Radak and the girls of A-Block

Like most of the female population here at Bryant, we have been reading the articles submitted to *The Archway* about "The Economics of having a Girlfriend."

And like everyone else, we too get a little chuckle out of it. But in speaking to the author, and other males involved in relationships on this campus, we came to realize that it's supposed to in part be based on truth.

Keeping this in mind, we decided that perhaps the boyfriends out there who are turning to Mr. Fischetti for help in shopping for their girlfriends, may want to consider some other "variables" that should be added into the equation.

We feel that perhaps the men out there should be made aware of: "The

Economics of Being a Girlfriend." This article is aimed at proving that whatever the monetary value that is eventually concluded by using whatever equation Mr. Fischetti is going to reveal, it will pale in comparison to the number we plan on revealing.

So first things first: The Economics of Being a Girlfriend.

It may seem like a strange concept at first, but think about it. It is true, and as the other article points out, guys have to shell out some cash on major holidays and birthdays.

But what isn't pointed out, is that girls too shell out for said occasions. Differences being: 1.) We do it because we want to, not because we have to; 2.) We don't complain and write newspaper columns about it; 3.) We don't need a mathematical equation to figure out the financially responsible amount to spend.

We buy presents that come from our hearts and we know they will love. But it is beyond the gifts where the real

issue lies.

You see, the majority of females involved in relationships have to allocate; time, money and effort on a daily basis, not just special occasions.

These are the things we would like to open your eyes too. We have broken these "expenses" down in an accounting-like fashion.

Next issue we will reveal the "Operating Costs" involved in being a girlfriend. And just one more thing for the gentlemen to think about in the mean-time: if your currently dating a girl that: 1.) You have to put that much time in to figure out how much money to spend, you don't just know something she would love;

2.) You're factoring in the possibility of a random Friday night hook-up; and 3.) You consider what benefits you will reap on your birthday while looking for her present, perhaps you should reevaluate whether or not this is a girl you should even be in a relationship, never mind what your planning on getting her for her birthday!

Bryant Cross Country Still Tearin' Up the Trails

By Chris Ludwiczak
Archway Sports Editor

Both the Men's and Women's Cross Country teams at Bryant have been running hard this season and are getting ready to compete in the NCAA Regional Championships next week.

The top seven runners from each team were determined last weekend at the conference championship meet, and will participate in the upcoming regional championship.

The men's team did exceptionally well at the Northeast-10 Championships, placing 6th out of the thirteen teams. This year's squad is one of the largest it's been in recent years at the college.

The team consists of five young talented freshman, four returning sophomores, and six experienced juniors. The Bulldogs are lead by junior co-captains Andrew Melfi and Nick Ward.

Coach Amy Laghlin was unsure how the team would perform this season. "We are a young team, with a good core of the men being freshman."

"Coming into the season, we didn't know what to expect," said Ward. As the season went on, it was evident that every member was able to contribute significantly to the success of the team.

"We saw how impressive the freshmen were," explained Ward, "and we sat down as a team and set goals for the remainder of the season".

Freshman Caleb Paul led the way in the conference championships last week, as he finished 19th overall, which earned him third team All-conference honor.

Paul was pleased with his time, and is looking ahead to next week's meet. The course for Regionals will be slightly different, adding distance. "It is a longer race, hopefully I'll be able to do better with the extra mile."

The Bulldogs are expected to have a good showing in the Regional Championships on November 9.

Running for Bryant in this race will be two juniors; Nick Ward and Paul Corbosiero, and five freshmen; Steve Barone, Jeff Britton, Steve Carr, Jason Mirsky, and Caleb Paul.

Corbosiero had this to say about the newest additions to the team, "I know we have a very talented team this year. A lot has to do with the freshmen class who have come in and built this team to be really competitive."

The men's team surpassed any and all expectations placed on them for the season. "I was very pleased with their performance this year," stated coach Laghlin.

The men will not be graduating any seniors. "We have a lot of potential for the coming years," stated Paul.

All will be returning next year to pick up where this winning season left off.

The women's team, armed with a full squad for the first time in several years, was expected to have a strong season.

The team consists of seven members, which is the minimal number required to enable Bryant to compete in races, as well as earn a score for their effort.

There are three seniors on the team, Kim Ferrara, Paula Kelpadlo, and Erika Lemay, all of whom contribute experience and strong leadership.

Ferrara, Kelpadlo and Lemay share the role of captain for the women's team.

With the exception of Kelpadlo, all will graduate this year, leaving junior Christina Quirke, sophomore Holly Resendes, and freshman Edie Muller to tear up the trails when they return next year.

The strength of num-

bers is, by itself, an accomplishment for the cross country program at Bryant.

"The women's team has always been very small," explained Kelpadlo, "and with

“*Cross-country is tough, we just have to be tougher.*”

- Paula Kelpadlo

injuries we usually end up with only a few individuals on the line at conference.”

In previous years, there have been races where only one runner competed to represent Bryant.

"Overall, I'm satisfied with the season," said Lemay,

"Going out my senior year, having a team of seven girls to compete with and be there for emotional support is a good feeling."

This past weekend, in the NE-10 Championship meet, Kelpadlo did extremely well, finishing 4th in the conference, and was awarded first team All-conference.

The team finished tenth overall, although this placement doesn't seem to accurately portray their performance this year. "We ran well and had a strong overall season," said Ferrara.

All seven members qualify to compete in next week's Regional Championship meet, where their goal is to individually improve upon their times for the 5K distance.

Amy Laughlin is the force behind both the men's and women's teams.

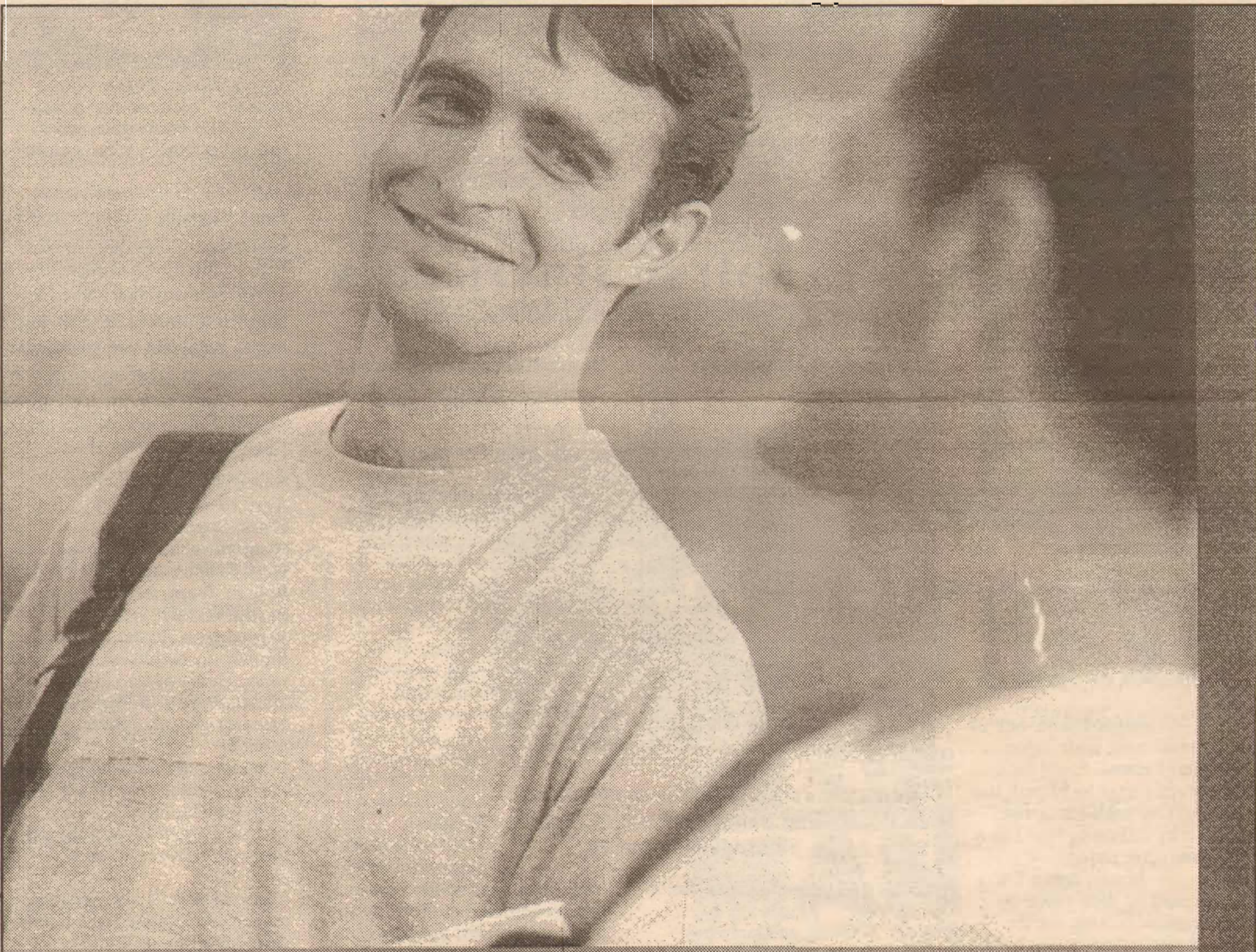
She is in her third year as head coach at Bryant College, and is working hard to build up the program.

This appears to be evident by the talented underclassmen on both teams and large numbers coming out for the squad.

"She really puts in a lot of effort and gets out great awareness about the program," stated Ward. "She works us hard so that we improve our times, but knows how to keep us healthy."

Fortunately, this season both teams have managed to stay healthy, for the most part, and are in good shape as they head up to New York for the NCAA Regional Championships next weekend.

NCAA Regional Championships
at Van Cortland Park
New York, NY
November 9, 2002



Forget free thought and speech.
College would be nothing without free checking.

Fleet Student Banking Package

Everything you need in a checking account.

- Balance your semester budget with Fleet HomeLink™ Online Banking
- Automatically add to your summer savings with AutoSave
- No annual fee Student Credit Card*
- ATMs and branches located near campus and throughout the northeast

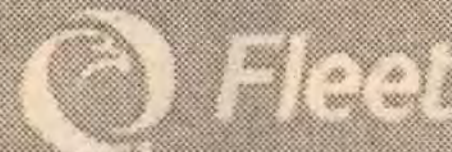
Visit a branch near you. Go to fleet.com/students. Or call 1-800-CALL-FLEET.

Open a Fleet Student Banking Package now, and it's

FREE

for the next 6 months.

Forward Thinking



Sell Spring Break Trips. All the fun & all the protections. American Express Worldwide Guaranteed Best Buy. 1 FREE trip for every 10 paid or cash starting with first booking you sell-we collect payment. World Class Vacations

1-800-222-4432

Fleet Student Banking Package offer ends October 15, 2002. All Fleet HomeLink features are free except Online Bill Payment. The Online Bill Payment fee is waived for the first six months after you initiate your first bill payment. Thereafter, a monthly fee of \$4.50 will be charged. *For Credit Qualified Applicants age 18 and older. Fleet and Forward Thinking are registered marks and Fleet HomeLink is a service mark of FleetBoston Financial Corporation. © 2002 FleetBoston Financial Corporation. All rights reserved. Member FDIC.

Coach's Corner

Women's Tennis

We finished our season 8-5 in the NE-10 and 9-8 overall. It was a tremendous season.

One of the strongest in a while. It's been a while since women's tennis has had a winning season. Several of our players received recognition at this year's NE-10 banquet:

Alex Spence- Freshman of the Year

Alex Spence- Second Team All Conference, first singles

Alanna Santanelo- First Team All Conference, second singles

Ashleigh McLean- First Team All Conference, fifth singles
Ashleigh McLean and Liz Gauthier - First Team All

Conference, third doubles.

All in all, a tremendous improvement on last year's record, on track for an even better year next year.

Submitted by: *Barbara Cilli*

Check out the article below for further information on the *Women's Tennis Team*

Four Bryant Players Named to Northeast-10 All-Conference Teams

By **Chuck Sullivan**

Bryant College Athletics

The Northeast-10 Conference has announced that Bryant College freshman Alex Spence (Lynnfield, Mass.) has been named the 2002 Northeast-10 women's tennis freshman of the year, as voted by the league's 13 head coaches.

In addition, Spence was one of four Bryant players to be named to the league's all-conference teams. Freshman Alanna Santanello (North Providence, R.I.) and sophomore Ashleigh McLean (Plymouth, Mass.) were named to the league's first team in singles play, while Spence was a

second-team selection in singles.

The doubles tandem of McLean and senior Elizabeth Gauthier (Winsted, Conn.) also earned first-team recognition.

Spence played exclusively at No. 1 singles and No. 1 doubles for Bryant in her freshman year.

She finished the fall season with a 13-5 singles record and was 10-2 in Northeast-10 matches.

Santanello, meanwhile, earned first-team recognition after registering an 11-0 singles record against Northeast-10 regular-season opponents. She was 11-6 overall at the No. 2 singles position.

McLean also earned first-team accolades after she

remained unbeaten in Northeast-10 Conference regular-season singles play through two years.

McLean went 14-3 overall at No. 5 singles and was 12-0 in the NE-10, extending her two-year league record to 21-0 in singles.

McLean and Gauthier comprised Bryant's most successful doubles tandem in the fall, as the duo finished 11-3 overall and was 9-1 in conference matches.

Bryant finished its fall season with a 9-9 overall record and an 8-4 mark in the Northeast-10 Conference, enjoying its most successful season since the 1994 fall campaign.

Irish Poised to Leapfrog Hurricanes

By **Omar Kelly**

South Florida Sun-Sentinel, courtesy of Knight Ridder Newspapers

Notre Dame is gaining on Miami in the Bowl Championship Series rankings.

By climbing to No. 4 in The Associated Press poll following Saturday's 34-24 win over Florida State, the Fighting Irish (8-0) closed the gap on Miami (AP's No. 1) to three-tenths of a point for the No. 2 spot in the BCS behind Oklahoma, which was idle last week.

Notre Dame, one of eight remaining undefeated Division I teams, could have been even closer to Miami, but the Fighting Irish lost some ground by falling to No. 2 in a few computer ratings.

Miami coach Larry Coker said he didn't exactly find himself rooting for the Seminoles last Saturday, but he did acknowledge it would have been advantageous for the Hurricanes if FSU had won.

"You do look at the formula and realize what it takes to get to where you need to be," Coker said. "But the bottom line is we need to win."

The BCS formula

uses the AP media and coaches' polls, computer polls, strength of schedule, losses

Hurricanes in next week's BCS poll with a win over Boston College this Saturday, even if Miami beats Rutgers.

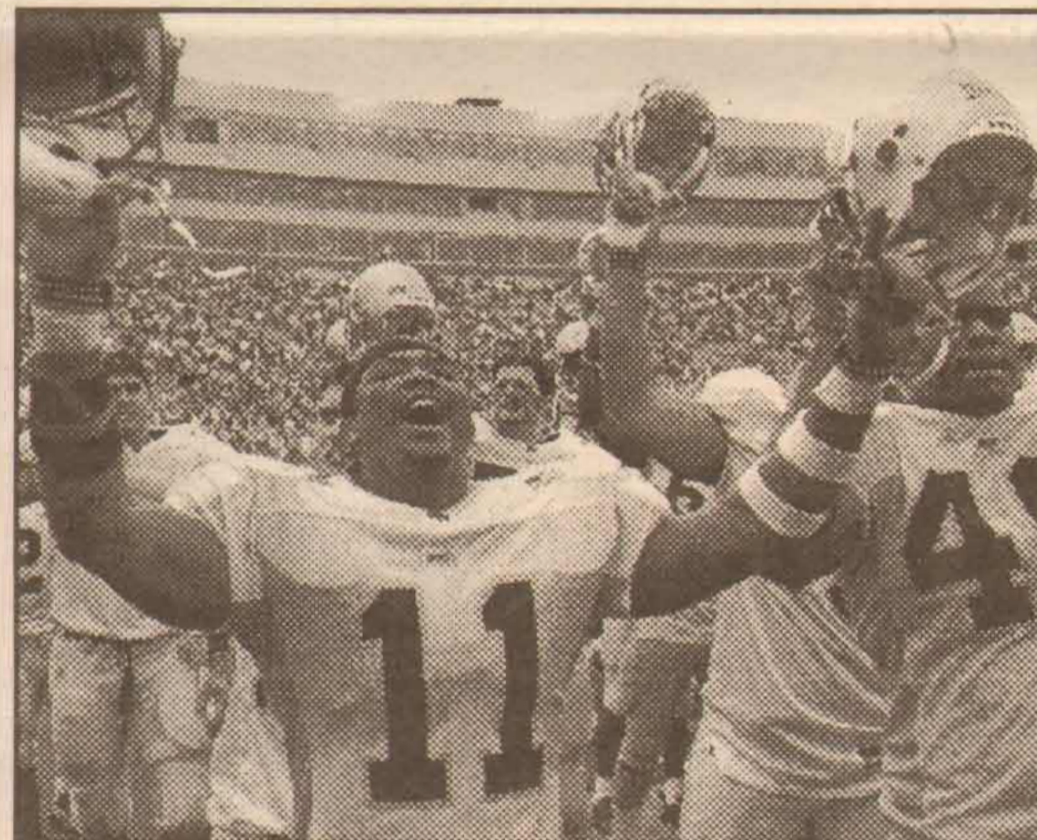


Photo courtesy of Knight Ridder Newspapers

Notre Dame's Marcus Wilson celebrates as No. 6 Notre Dame beat No. 11 Florida State 34-24, Saturday October 26

and a bonus-point system for big wins.

Notre Dame has one of the top-rated schedules in the nation, which gives them a big advantage over UM in the BCS strength of schedule column.

What does it all mean? The Fighting Irish, who have a 6.99 BCS rating to Miami's 6.69, are close enough that they could jump the

Fortunately for the Hurricanes, Notre Dame's remaining schedule, which features games against Rutgers (1-7) and Navy (1-7), is the weakest of the eight remaining undefeated teams, and that will cause the Fighting Irish to slide in the BCS until they visit Southern California in the season finale on

Nov. 30. Coker doesn't seem too concerned that there are so many undefeated programs and believes the system will work itself out.

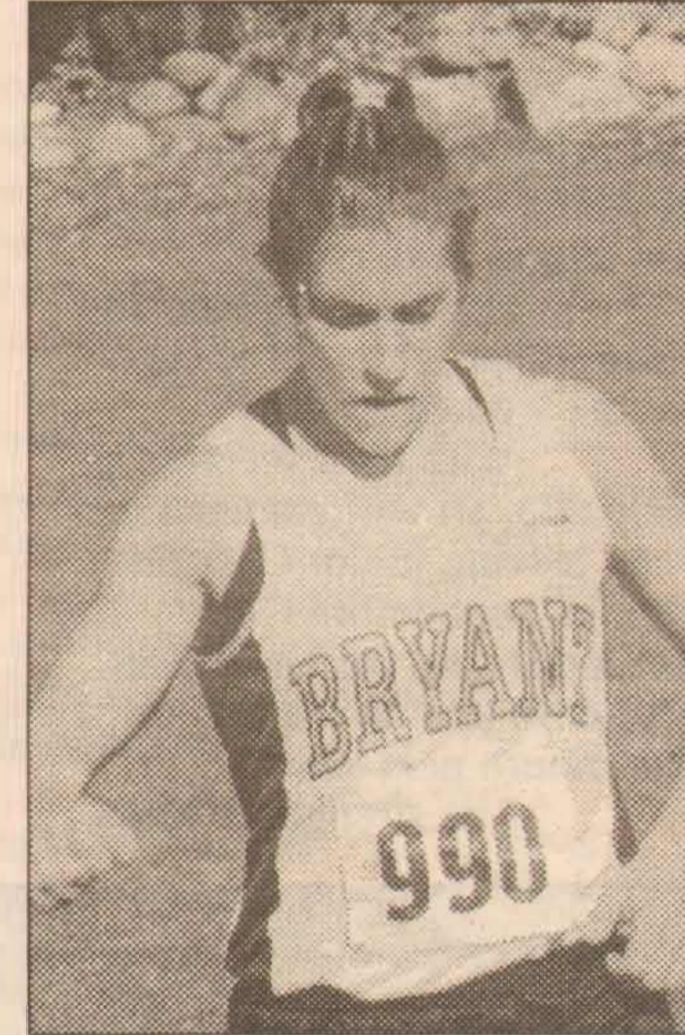
"We know as it all transpires those losses come in," he said. "The last two years we've only had one undefeated team at the end of the year, and I think it's going to be very tough for a lot of us to do that."

The BULLDOG'S BEST



The Archway's athletes of the week

Paula Klepadlo



Superstitions: "Nope. I don't have any 'lucky socks' or anything." But Paula does make sure to ALWAYS wear a clean uniform

Paula Kelpadlo (Smithfield, RI) - A senior from Smithfield, Kelpadlo finished fourth out of 108 runners at the Northeast 10 Cross Country Championships this past weekend with a time of 19:46. She was also named a first team All-conference selection for her efforts and led the Bulldogs to a tenth-place finish out of 12 teams. Kelpadlo will participate in the NCAA New Northeast Regional on Saturday, Nov. 9 at Van Cortland Park in the Bronx, N.Y. From there, the top finishers advance to the NCAA Championship at Ashland University in Ashland, Ohio on Saturday Nov. 23.

Name: Jesse Lewis

Age: 19

Class: Sophomore

Hometown: Elizabeth, NJ

High School: Abraham Clark

Bryant Team: Football

Position: Cornerback

Nicknames: Hunter

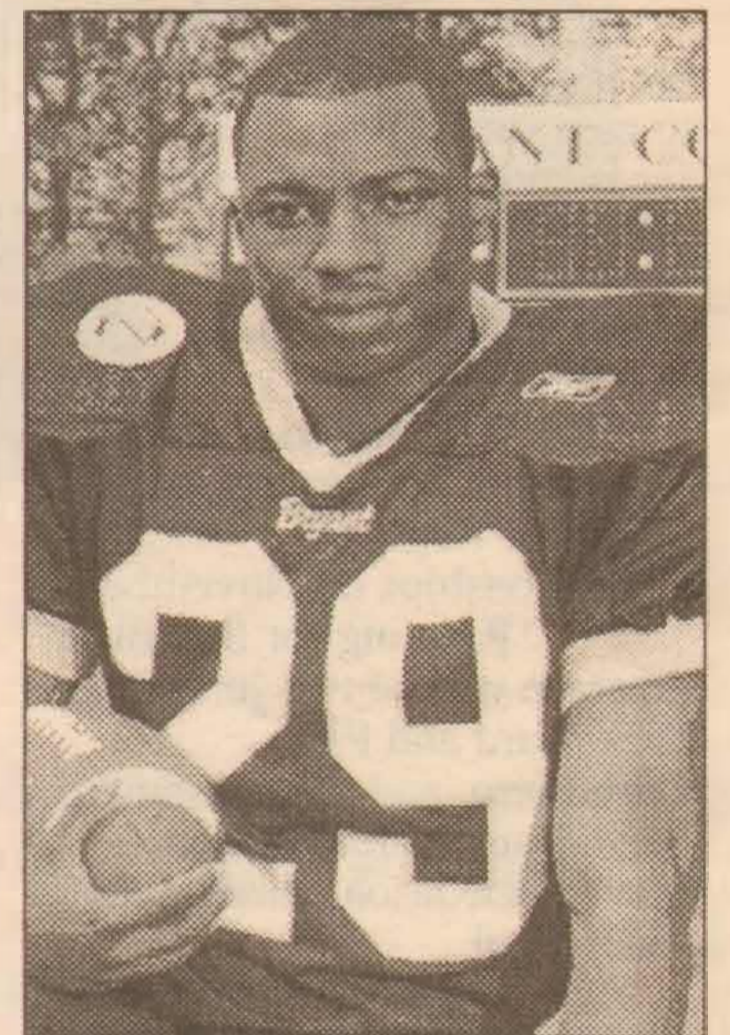
Biggest accomplishment in your sport: Being named all-county his senior year of high school

Most memorable sports moment: "Catching the winning interception my senior year which sent us to the play-offs."

Interesting fact about yourself that might surprise people: "I'm shy."

Superstitions: "I always wear my cut-off Roselle High School shirt under my uniform."

Jesse Lewis



Lewis grabbed two interceptions in the Bulldogs 12-6 win at UMass Lowell this past weekend. He and teammate Che Perez combined to intercept a school-record four passes in the game. Individually, Lewis has set a school record totaling four picks on the season including one last week against Saint Anselm which he snagged in the end zone and returned 49 yards. He also has 28 tackles and eight break ups.

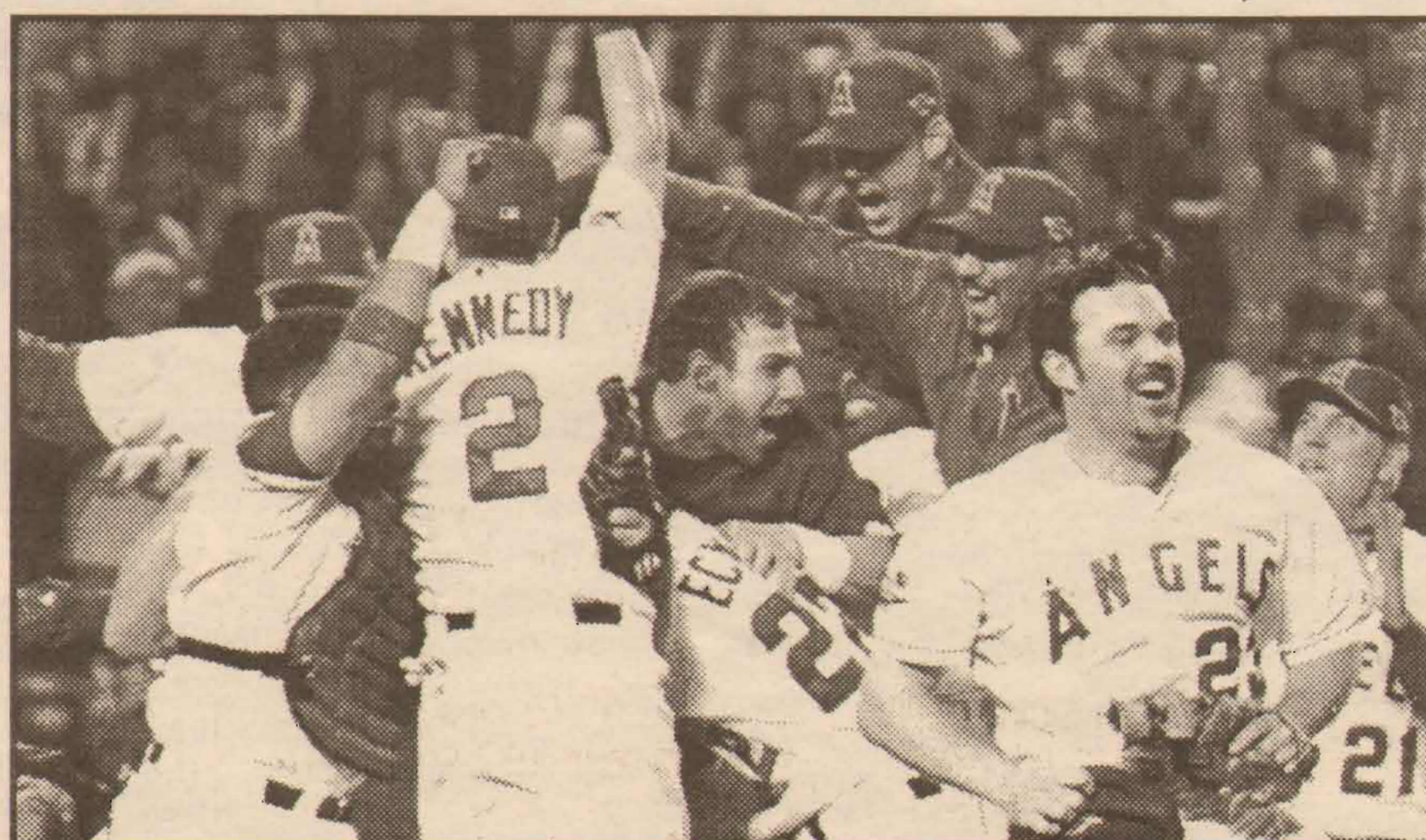
This week: Jesse Lewis named NE-10 Co-defensive player of the week!

With four wins in their last five games, the Bulldogs are 4-4 on the season, including 4-3 in the Northeast-10, good enough for fourth-place in the 11-team conference. Bryant returns to action Nov. 2 at Stonehill before their final home game of the season Nov. 9 vs. American International.

Angels Win World Series in Game 7, 4-1

The Anaheim Angels celebrate after defeating the San Francisco Giants 4-1 to win the World Series on Sunday, October 27, 2002 at Edison Field in Anaheim, California.

(For complete story turn to pg 2)



Do you know someone who deserves to be the next "Bulldog's Best?" Nominate someone who has done something exceptional in their sport, and we will feature them here in *The Archway*. If your athlete is chosen, you will receive a Coca-Cola Prize Pack courtesy of Bryant College Athletics.

Senior Steve Howington is the first winner-He nominated last issue's athlete, Jason Clary.

Nominations can be sent to: archway@bryant.edu or bulldog@bryant.edu

Archway Profile: Dean Elizabeth Powers

By Keith Hanks
Archway Staff Writer



Bryon Little

orchestral music, especially the Boston Pops Orchestra. Symphony Hall is one of my favorite places to be. I also enjoy cooking and baking, especially making gourmet cookies. For me, cooking is therapeutic."

What is your Greatest Strength?

"I believe my greatest strength is the philosophy I bring to my work. I believe we are all teachers and we are all learners. I approach every student situation and every administrative task with this in mind."

What is Your Most Important Life Influence?

"My family is my most important life influence. I have a husband, two daughters and a son. They have opened my world up to art, music, culture and diversity. They have taught me the true meaning of love and friendship."

The Archway encourages students and other members of the Bryant Community to offer suggestions for our Profile section. Faculty, Staff and Administration are all eligible. If you would like to suggest someone, please email The Archway at archway@bryant.edu, or call ext. 6028.

Position at Bryant:
Assistant Dean of Undergraduate Studies & Director of Undergraduate Programs

What is your biggest challenge?

"Dealing with my shyness. It has been a challenge for as long as I can remember."

If you were not at Bryant where would you be, or what would you like to do?

"I am an educator at heart. I would be teaching. I would prefer to be some place warm and sunny on the Pacific Coast."

Do you have any advice for Bryant students?

"Take Education Seriously! 'Education changes lives' is more than a tag line. Education has changed my life and it will change yours too."

Do you have any involvement with organizations or interests outside of Bryant?

"I have a passion for

Monsoon Wedding, a comedy about family issues and an arranged marriage in India, will be shown here at Bryant as part of the 2002-2003 Arts Series.

"TWO THUMBS WAY UP!"
— EBERT & ROEPPEL

★★★★★
"A Sheer Delight!"
— Another Reviewer NEW YORK POST

"I Loved It! It's More Fun Than Anything Else Around!"
— Peter Dinklage EBERT & ROEPPEL

Monsoon Wedding

www.monsoonweddingmovie.com USA

© 2002 USA FILMS, LLC. ALL RIGHTS RESERVED

Tuesday, November, 12th at 7p.m. in Janikies Auditorium

WHAT HAVE YOU BEEN FOR HALLOWEEN?

Compiled By Farai Mbigi, Archway Staff



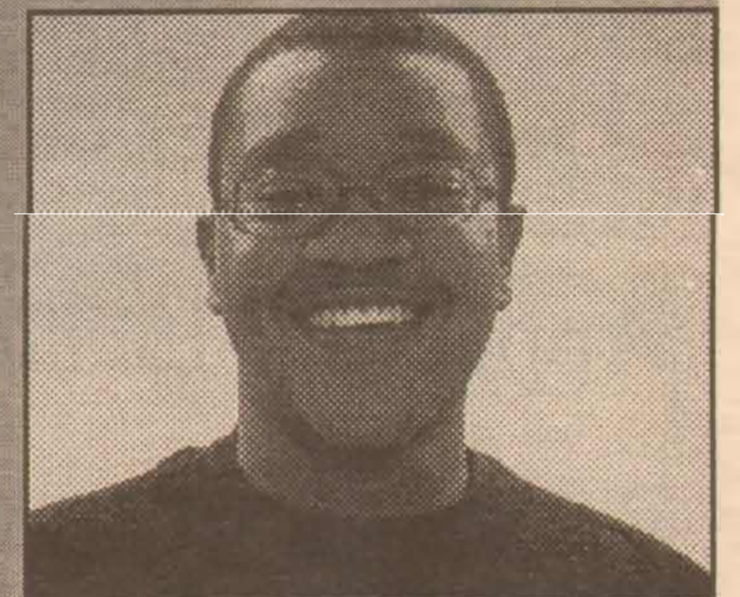
Andrea Barbosa '04

"I was Britney Spears!"



Michelle Morris '05

"I was always a witch, one time I was Elvira."



James Rowell '03

"I was a pirate."

"Courage to Care-Positive Peer Influence on the College Campus"
A realistic look at college drinking on campus

Presentation by Carolyn Cornelison, P.h.D.
When: Tuesday, November 5th at 3:30 p.m.
Where: Janikies Auditorium
Sponsored by: Athletics
Bacchus/Peer Ed
Gamma
Residence Life
SPB

All Are Welcome!

Attention Students

Flu Shots and/or Meningitis Shot are now available at Health Services while supplies last.

Call 232-6220 for an appointment.

Tuesday through Friday 1-4 p.m.

\$10 - Flu Shot
\$70 - Meningitis Shot (paid in advance before ordered)

Flu Shots and Meningitis Shots Available

Health Services Hall 16

"A SENSATION!"

— TIME Magazine

BLUE MAN GROUP

RA's see the show for free!

BOOK A FLOOR TRIP FOR 20 OR MORE AND RECEIVE A FREE TICKET.
Group rates available for most performances. Call 617.426.6912 for more info.

REGULAR SCHEDULE Tue-Thu 8, Fri 7-10, Sat 4, 7-10, Sun 3-6	CONTACT INFORMATION 617.931.2787 Info-Group Sales 617.426.6912	LOCATION: Charles Playhouse 74 Washington Street Boston
---	---	--

off the mark

Cartoon by: Mark Parisi



Appearing In The Next *Archway*:

Reviews, Interviews, and Previews

This new feature will be dedicated to the live entertainment scene at Bryant College. Specifically focusing on bands and comedians.

Your Guide to Local Music

Area Concerts, Nov. 1st-Nov. 15th

Date	Artist(s)	Venue
Friday -November 1st	Psychedelic Breakfast	Living Room
Friday -November 1st	Les Savy Fav	Met Cafe
Friday -November 1st	Pretty Girls Make Graves	Met Cafe
Saturday -November 2nd	Pedro The Lion	Lupo's Heartbreak Hotel
Saturday -November 2nd	Scientific	Lupo's Heartbreak Hotel
Saturday -November 2nd	Dalek	Met Cafe
Sunday -November 3rd	Deadweight	Lupo's Heartbreak Hotel
Sunday -November 3rd	The Les Claypool Frog Brigade	Lupo's Heartbreak Hotel
Sunday -November 3rd	Kid Koala	Met Cafe
Sunday -November 3rd	Push Button Objects	Met Cafe
Monday -November 4th	Cher	Dunkin Donuts Civic Center
Monday -November 4th	Cyndi Lauper	Dunkin Donuts Civic Center
Monday -November 4th	Particle	Met Cafe
Thursday -November 7th	Good Charlotte	Lupo's Heartbreak Hotel
Thursday -November 7th	Pinetop Seven	Met Cafe
Thursday -November 7th	Shannon Wright	Met Cafe
Friday -November 8th	The Machine	Lupo's Heartbreak Hotel
Friday -November 8th	Linda Eder	Providence Per. Arts Center
Saturday -November 9th	"Hot 9 Night" (Camron, Eve,ect.)	Dunkin Donuts Civic Center
Saturday -November 9th	Cannibal Corpse	Lupo's Heartbreak Hotel
Saturday -November 9th	Hate Eternal	Lupo's Heartbreak Hotel
Saturday -November 9th	Peter Wolf	Met Cafe
Sunday -November 10th	From Autumn To Ashes	Lupo's Heartbreak Hotel
Sunday -November 10th	Onlinedrawing	Lupo's Heartbreak Hotel
Sunday -November 10th	Manplanet	Met Cafe
Sunday -November 10th	The GroovieGhoulies	Met Cafe
Monday -November 11th	Bloodlet	Lupo's Heartbreak Hotel
Monday -November 11th	GWAR	Lupo's Heartbreak Hotel
Tuesday -November 12th	Gov't Mule	Lupo's Heartbreak Hotel
Wednesday -November 13th	Psychedelic Breakfast	Living Room
Wednesday -November 13th	Graham Colton	Met Cafe
Thursday -November 14th	Keller Williams	Lupo's Heartbreak Hotel

Helping Hands is Back!

Hands will be on sale starting October 21st for \$1.00

Buy them from any Helping Hands Committee Member: Allison DeMusis

Amanda Coyne
Nate Davis
Keith Dubois
Becky Lafrancois
Hank Parkinson

Please support this wonderful cause-all proceeds will buy holiday gifts for less fortunate children!



The Poet's Corner

It is important to note that The Poet's Corner cannot exist without submissions from Bryant College students, staff, and faculty. *The Archway* strongly encourages anyone who wishes to contribute to send us an original poem. These poems will not be critiqued nor commented on by *The Archway* staff, and are presented for the entertainment and benefit of the Bryant Community.

Submissions From The Bryant Community. Poems can be submitted to archway@bryant.edu

Untitled

Sunrise and Sunset, day in and day out.
Does She ever get bored? This is something to think about.
Does She make people happy? That I do not doubt.
A long forgotten friend of ours, I say that with a shout!
To you I send my regards,
To you I wish be saved by the Gods.

-Saad Al-Rashed, '03

The Filthy Hands Lounge

Squeezed out by their vice

5:00 and miserable
Time for the daily dose

A gentleman you say?
A new euphemism for lout

Drink's already on the table
Adorn your mask and cloak

I see a circus of amoral collars
Unaware the ring is inside out

Filthy hands running wild
Like slimy snakes after mice

-Kevin Riley, '03

Fake laughter and smiles

Not A Popcorn Movie

Anyone can watch my movie if they want to
The ones who do,
I watch their movies too
And believe me I only watch a few

Everything is seen first hand
I don't know when I am being filmed
The camera cannot be escaped

The viewers laugh with humor but more in shock
I am debated around the clock by countless critics
I don't want this picture to be seen by many
I am afraid my pocket will be full of dirty pennies

All I know how to be is me
But once the reviews are in
The public is much harder to astonish

-Joseph White, '03

CONTRA DANCE

First Time Dancers Welcome!

Matthewson Street United Methodist Church
143 Mathewson Street
Downtown Providence

Join us the 3rd Friday of the month October-May
November 15th 8-11p.m.

Donation: \$8 adult, \$4 under 18, \$13 family
A fun style of folk dancing for people of all ages
and lifestyles!

For more info: call 331-8900

or email Gregg Carter
gcarter@bryant.edu

Cocoon

Enclosed in a tight wooly white shell,
it took awhile to get here.
Moving inch by inch to find the right place
Growing, building, and now patiently waiting.

The inevitable end is near,
still inside preparing for a new existence.

Not without a few more challenges ahead,
and some growth...a lot of growth.

Soon, the emergence.
Exquisite beauty, grace, and maturity.
From these developments occurs a sadness
The warm safe enclosure will no longer shelter life

Even so, ready to spread newfound wings.
Ready to flutter off to a naive existence

Not without a few more challenges ahead,
and some growth...a lot of growth.

-Lauren O'Donnell, '03