



THE ARCHWAY

Friday, September 24, 1982

Bryant College, Smithfield, RI 02917

Volume 49, Number 8

Ways and Means Committee approves proposal

Senate implements Guaranteed Senate Loans

By Ben Edwards
Of The Archway Staff

In the past most campus clubs and organizations recognized by the Student Senate have found it nearly impossible to sponsor a programming event and clear a profit.

Available figures tend to support this claim. Average costs for maintenance, security, fire marshal, and electricians for a mixer in the MAC are \$350.00. With the minimum cost for a band at about \$500.00, the average club must raise \$850.00 in revenues just to break even. At a cost of \$2.00 per ticket, that's 425 people through the door and still no profits.

The problem of this high cost of student programming was considered last semester by the Quality of Student Life Committee. After its study, the committee made two recommendations: 1) Some type of alternative funding must be made available to aid clubs and organizations who sponsor student programmed events and 2) More dual programming (2 events on the same night, giving students a choice) must be practiced. Considering this predicament and with the advice and recommendations of Vice President for Student Affairs Les LaFond, Senate President Joe Deegan and Treasurer Jeff Vancura decided to devise a plan to aid

the students. Weeks of work recently produced a proposal by both Senate members called the "Guaranteed Senate Loan". (GSL)

What is the Guaranteed Senate Loan and who can apply for one? Any club or organization recognized by the Student Senate is eligible for a Guaranteed Senate Loan, as long as the money is used for a programming event.

In order to apply for the loan, the organization must complete a guaranteed

"The GSL is a unique new program that gives each club... a realistic chance to raise funds."

Senate Loan application two weeks in advance of the event. On the application, among other things, the organization must give a written estimation of costs for security, fire marshal, maintenance and electricians and also an estimation of the band contract. The completed loan application is then submitted to Senate treasurer Jeff Vancura. Next, the application and a representative from the sponsoring organization must appear before a meeting of the Senate Ways and Means Committee. Here, the application is either accepted or rejected on the grounds of the viability of the mixer. Guaranteed Senate

Loans cover expenses up to \$800.00.

In order to understand how the loan works, compare four hypothetical situations:

Without Senate Loan

FIRST: Mixer A - Total costs for the mixer are \$800.00, Total income is \$600.00, the organization loses \$200.00.

SECOND: Mixer B - Total costs for the mixer are \$800.00, Total income is \$1000.00, the organization raises \$200.00.

With Guaranteed Senate Loan

THIRD: Mixer A1 - Total costs for the mixer

are \$800.00, Senate loans the organization the \$800.00. Total income is \$600.00 which is divided between the Senate and the sponsoring organization according to the following scale:

% of Total Loan Raised in Revenues	Senate Share	Organization Share
0-25%	90%	10%
26-50%	80%	20%
51-75%	70%	30%
76-100%	60%	40%
over 100%	50%	50%

Continued to pg. 3, col. 1

Book sales 'unethical'

By Doug Dorman
Of The Archway Staff

A spokesperson for a major book publisher said her company considers the sale of complementary books to college students "an unethical as well as an unprofessional business practice."

Damaris Ames, Communications Director for the Houghton Mifflin Company, said the company knows about this practice but they can do little to stop it because it is not illegal.

Furthermore, she said that Houghton Mifflin is not the only victim of this practice and that, in fact, most major book publishers have suffered losses caused by the sale of complementary books.

Book publishers in trying to promote their books, give a number of complementary copies of every edition they print to book distributing companies such as the Follette College Book Company. Generally, the complementary copies are then given to

Continued to pg. 3, col. 3

Can you identify this?



South Hall on the old Bryant campus was one of the original buildings on that campus. The Iron Archway at the entrance of the building is now between the reflecting ponds on the present campus. Story on page 10.

Bryant Archives photo

Brycol to ask for return of house

Since 1975, Brycol has operated from the Mowry house. In 1978, the college took part of it away, and Brycol wants it back.

By Diana Douglass
Of The Archway Staff

Since its organization in 1975, Brycol has occupied the Amie Mowry House, or Brycol House. However a controversy began in 1978 when the Administration decided to take away part of the building because of space problems. Now in 1982, a much expanded Brycol would like this space back.

Cindy Borelli, president of Brycol, explains, "When Brycol first started we had more space than was necessary, however now we are growing as an organization—and will continue to grow—and need that space which was taken away." Borelli estimates that Brycol has access to about half of the Brycol House.

Brycol's office conditions are now very crowded, with two or three people to an office. According to Borelli other problems are a storage area for files, and a Conference Room where Brycol can "congregate and kick around ideas". Due to a request by Brycol,

this issue will go before the Space Committee.

Originally the Administration's portion of the Brycol House was used for the Physical Plant Administrators. When these administrators were moved to their present location, Dr. Gaytha Langlois and Dr. Norma Bains were granted office space in the house. Last year the ROTC was allocated the kitchen area to use for storage.

Dr. Langlois' and Dr. Bains' offices consist of one large room with a partition between the desks. Professor Langlois commented that "Historically faculty members at Bryant have not had sufficient office space to effectively carry out the variety of their teaching duties especially meeting with students and

preparing for lectures." Dr. Langlois says she was attracted to the Brycol House because she felt it was "more conducive to the type of work I do, for example environmental issues, basic ecology, and observations, on the natural world."

Comments Langlois, "like windows, sunshine and fresh air." "That office is very special to me." Dr. Bains was not available for comment.

According to Dean of Undergraduate Faculty Stanley Kozikowski there is "no office space available at all" for faculty members. He further stated there are "67 offices for faculty and close to one half are doubled and some tripled." Kozikowski

described the situation as "a tremendous space crunch."

According to Major Kennedy, a campus recruiter, the ROTC is using the kitchen area of the Brycol House "primarily for storage."

According to Brycol there are other storage areas, for example in the MAC, where ROTC textbooks and pamphlets could be stored. Brycol feels it could put the kitchen facilities to better use by possibly making cookies and cakes there.

No date has been set for the Space Committee meeting.



Photo by Jim Tammaro

The Brycol organization is seeking to get back the part of the Mowry house taken from them for office space.

Within THE ARCHWAY

INDEX

Announcements	pg. 5
Classifieds	pg. 15
Inquiring Photo	pg. 11
Opinions	pg. 3
Organizations	pg. 5
Personals	pg. 15
Sports	pg. 5

Mike's Weather Watch pg.2

Run for Your Life Anniversary celebrated. Story on pg. 7

EDITOR'S CORNER



Programming at Bryant may be taking a different twist in the months ahead.

With the Guaranteed Senate Loan program, weekends may see the parking lots full once again.

Under the direction of President Joe Deegan and Treasurer Jeff Vancura, the Senate has come up with a "no lose" situation for organizations.

Under the plan, the Senate will back each organization up to \$800 per event, and the Senate and the organization will split the receipts, according to set percentages. If the event makes or loses money, the organization still makes money on the event.

And we all will gain if it works. No longer will clubs be hesitant to sponsor an event, for fear of losing money. Possibly no more eventless weekend nights, possible better entertainment. The sky's the limit, as the saying goes.

But what will it take to bring this about? Certainly the cooperation of the whole campus.

The organizations need to evaluate their event carefully, so as not to abuse the program. The Senate itself needs to be cautious to avoid passing out money too freely. And, of course, the students need to support the program by attending mixers, wine & cheese nights, and movies.

So maybe the suitcases will now be packed away on weekends, and Bryant students will stay and support the organizations. The Senate has a potential winner on its hands, and it could help breach the programming problems created by the alcohol situation. It is, at least, worth a concentrated effort by all.

Letters to the Editor

Food Service Director reacts to story

To the Editor:

I would like to further explain some of the items described in last week's article on the meal plan increase and charges in the cafeteria.

Some students believe that Saga "owns" the cafeteria here at Bryant. This is not the case. Saga is a management service company only. All of the equipment in the cafe or kitchen is purchased and owned by Bryant. We make recommendations as to replacement and additions each year. As with all departments on campus a budget is prepared and submitted for consideration.

When I talked with this paper I was asked if inflation is food caused the price increase in the meal plan for this year. Food alone accounted for a little over half of the dollar increase. Labor cost accounted for about \$30.00 and the rest was caused by items that many students do not relate to when asked about food service.

The cost of operating a food service goes far beyond food and salaries for the cooks and service staff. I used as an example this summer's replacement of the tables, chairs and carpet in the cafeteria. To try and simplify the example I said the cost amounted to \$30 on this year's increase. I did not mean to imply the increase was for this purpose only.

Renovation and replacement of equipment in an ongoing thing in any business. Since 1979 the college has spent over \$200,000 in replacement and modernization of equipment

for the food service.

Another area that has risen dramatically in the last decade are ENERGY costs. Gas and electricity costs have gone up much faster than food or labor. To give you an idea of these expenses the booster heater on the dishwasher uses as much energy as an all-electric three bedroom house!!

Also I want to correctly explain the hamburger used in the cafe. When interviewed I thought the question asked was, are any meats beside beef used in the hamburger? There are no other meats used, however, there are three pounds of vegetable protein (soybean) per one hundred pounds of hamburger. This means that for every hamburger you eat you are also having one tenth of one ounce of vegetable protein. Technically the hamburger cannot be called 100% beef. I do apologize for this misconception. I was not trying to hide or mislead anyone. Why do we use this type of product? First it does lower the cost of the hamburger. Secondly it also improves the quality when used in a cafeteria styled service. The vegetable protein retains moisture in the hamburger when it is being held for serving. Because we can not cook each meal to order we must prepare quantities ahead and hold them until used.

I hope this helps answer some questions about the food service.

Hank Strahnsnick
Food Service Director

FRANKLY SPEAKING

phil frank

THE ARCHWAY

Editor in Chief	Joe Zukowski
Associate Editor	Mike Murphy
Managing Editor	Steven Medin
Business Manager	Peter Jalbert
News Editor	Ben Edwards
Features Editor	Robin DeMattia
Sports Editor	Rick Morenzoni
Production Manager	Bryan Cafferky
Photography Editor	Ed Madden
Asst. Photo Editor	Wendi Parker
Administrative Secretary	Barbara Day
Advertising Production Manager	Anne Behling
Advertising Sales Manager	Kim Pestana
Graphics	Dan Lynch

News/Features: Doug Dorman, Diana Douglass, Judi Monnell, Linda Pipines, Kathy Smith, George Spellman

Sports: Bob Daigle, Kevin Faulkner, Bob Mitchell, Toni Rackliffe, Kathy Smith, Tom Zoda

Photography: Leigh Heraecker, John Morin, Mark Phillips, Jim Tammara, Terri Woloszynski

Circulation:

Production: Jody Dombrowski, Jennifer Boone,

Phototypesetting: Cathy Arno, Rosemary Bettencourt, Kevin Flanagan, Donna Twombly

Staff in Training: Laurie Hilfman, Lynn Wentzell, Janice Vigliotti, Joan Roscoe, Julia Davison, Richard Levin, Stephen Buell, Steven R. Brown, Toni Rackliffe, Robert Leonardi, Karen Woltjen, Tom Rogers, William M. Busk, Kevin Allard

The Archway is composed weekly during the academic year by the undergraduate students of Bryant College. The Publisher is Bryant College. This newspaper is written and edited by a student staff and no form of censorship is exerted over the contents or style of any issue. The news and opinions expressed in this publication are those of the students and do not necessarily reflect the official views of the faculty and administration of Bryant College. The Archway is printed by Weston Graphics, Bellingham, Massachusetts, by offset.

Deadline for all submissions and ads is Midnight Tuesday. Copy considered objectionable by the Editorial Board will not be accepted. All submissions become property of The Archway and cannot be returned. Announcements and news released from the College and surrounding community is printed at the discretion of the Editor-in-Chief.

The Archway is a member of the Columbia Scholastic Press Association, currently in first place standing.

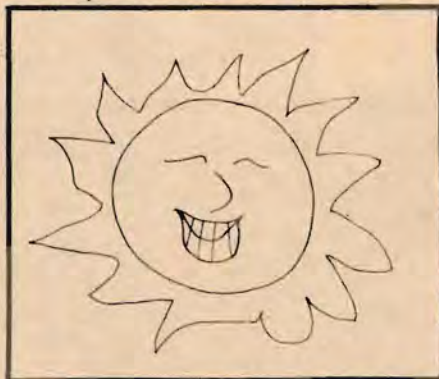
Offices are located on the Third Floor of the Multipurpose Activities Center. Mailing Address is Box 37, Bryant College, Smithfield, RI 02917. Phone number is (401) 231-1200 ext. 311 or 313.

CONDOMINIUMS? IS THAT
WHAT YOU WANT?... CONDOS?
WHAT MAKES YOU THINK YOU
COULD BUY CONDOMINIUMS
AT A DRUGSTORE?



CREATIVE MEDIA SERVICES Box 5055 Berkeley, CA 94702

Weekend Weather Watch



Saturday Fine and Dandy. A good day for a picnic in the parking lot, puckering up for porcupines, or peeking into the pits.



Sunday Sensuously Sunny. A day for jello wrestling, jocularly, and jeep repairs.

Letters to the Editor

Include Jazz Band

To the Editor:

There are certain procedures a potential group must comply with in order to become a recognized Bryant organization. These procedures include submitting a proposal and statement of purpose to the Student Senate and Director of Student Activities. The Bryant Jazz Band follows these steps every year and is a recognized organization.

The reason we are writing is because we, the Band, are continually being overlooked. The Archway listed 20 campus organizations in the September 10th issue but failed to mention the Jazz Band. It does, however, list the Jazz Appreciation Club, but it is totally separate from the Jazz Band.

Over the years, performances by the Bryant Jazz Band have included Parents' Weekend, the Festival of Lights, and the Invalids gong show. Yet, we fail to be noticed.

All we ask is that we be included when publishing lists of clubs and organizations.

Thank you
The Bryant College
Jazz Band

Blood Center sets drives

To the Editor:

Each year of College is more than gaining the knowledge and education to assure a secure future. It's also the time during which we learn to become responsible members of a community and society.

As on each campus across the country, Bryant College conducts Blood Drives several times each academic year. Last year Bryant students donated 320 of the 4,248 units of blood contributed by college students throughout Rhode Island. These selfless gifts saved countless lives. In fact, on the average, each blood donation was processed into at least two, and sometimes three, transfusion

products.

Donating blood is not as difficult as it may seem. It is surprisingly easy and the reward of helping strangers makes any inconvenience or discomfort well worthwhile. The unfortunate people needing blood rely on you to aid them on the road to recovery.

The Rhode Island Blood Center, a non-profit organization which is solely responsible for providing all the transfusion products used in Rhode Island, must increase its collections by more than 8,000 units to meet the growing demand for blood. It is hoped that college blood drives will play a large part in meeting this goal.

So, as you prepare for this academic year, why don't you put "giving blood" on your list of new experiences to try? And if you're already a donor, encourage others to join in. And finally, if your campus organization isn't involved, why not get it involved? Call the Rhode Island Blood Center. The patients you'll help will be eternally grateful.

Rhode Island Blood Center

Editors Note: Blood Drives will be conducted at Bryant on September 29th (sponsored by the Greek Letter Council), October 26th, and December 1st.

Dean react to systems editorial

To the Editor:

In rebuttal to your editorial concerning the availability of Systems Courses for non-majors:

1. For the Fall semester, three sections were open to enrollment—one section of COBOL and two sections of MICRO—COMPUTERS.

2. Historically, more electives are available during a Spring semester. The working papers for the Spring 1983 master schedule have been in the hands of the Department Chairs since September 1, 1982. A quick check of the documents would demonstrate the scheduling of more electives.

3. The building of a master schedule is an orderly process which attempts to encompass the distribution requirements of the various concentrations, the availability of faculty, and the elective desires of students. Courses are not created on demand for all levels. The pre-registration process allows for an orderly progression from Seniors to Freshman in the selection of courses. Obviously, the Junior has more semesters remaining to schedule classes than does the Senior. Further, the Juniors and Seniors should be scheduling courses primarily at the 300 and 400 level.

With regard to the Systems course in question, at the close of pre-registration on March 30, 1982 (i.e. when classification

numbers 7, 6, and 5 had finished) seventeen (17) students had enrolled in SM 211 COBOL and twenty-three (23) students in each section of SM 471 MICRO—COMPUTERS. Non-major upperclassmen were not denied an opportunity to opt for a systems course.

The opportunity to offer courses and multiple sections of a course are in relationship to the number of qualified faculty available. For the department of Systems Management (which in the Fall of '83 will be retitled Computer Information Systems) the addition of three faculty versed in COBOL, provides the College with the opportunities to accomplish the point of your editorial.

Dean Alberg

From the front page

GSL program

In Mixer A1, total income was \$600.00, making it 75% of the total cost, thus the income would be split 70/30 according to the table. In this case the organization would make \$180.00 profit, (30% of \$600), instead of losing \$200.00 as it did in mixer A. The Senate would get back \$420 of its \$800 loan.

FOURTH: Mixer B1 - Total costs for the mixer are \$800.00. Senate loans the organization \$800.00. Total income is \$1,000 which is divided between the Senate and sponsoring organization according to the previous table. In this case, total income was

\$1,000, making it greater than 100% of total costs.

Here, the organization would make \$500.00 (50% of \$1,000), where in Mixer B it would have made only \$200.00.

The division of income will take place on Mondays in the Senate Treasurer's office. Organizations may receive payment at this time via cash, check or as a credit to their respective account. The progressive pay scale shown in the table acts as an incentive to report correct earnings (the more you report, the more you make). However, to act as a check, a control system will be implemented to check revenue periodically at each Senate

loan sponsored event.

The Guaranteed Senate Loan is a unique new program that gives every club and organization a fair and realistic chance to raise funds. Senate President, Joe Deegan views the idea as a means to "enhance campus programming and open the way for dual programming as well." All recognized clubs and organizations are urged to make use of this new loan program.

Sold: free books

college professors who decide whether or not to use the books in their classes.

The complementary copies that were sold to Bryant students by the Follette College Bookstore on campus were distributed by the Follette Company. These books had used book stickers covering the complementary copy stamps.

A top executive for the Follette Company, who refused to be identified, would not comment on whether Follette's put these

stickers on the books. He did, however, stress that the sale of complementary books is not illegal and that the situation at Bryant is not unique.

He also pointed out that the books are in fact used books if certain professors choose to sell them back to the distributors. A source close to the Bryant Bookstore stated that some professors do sell their complementary copies to various school stores serviced by Follette.

An official of the Illinois Better Business Bureau said the Follette College Book Company is a member of the Better Business Bureau and has maintained a "satisfactory" business record. And two officials of the Rhode Island Better Business Bureau claimed the practice of selling complementary books as used books may be "somewhat deceiving" but it is certainly not illegal.

Bryant College President William O'Hara, when told of the possible numbers of complementary books which had been sold, promised to investigate the situation further.

TKE receives 'keg award' from St. Jude's

By Ben Edwards
Of The Archway Staff

Last semester, on May 1, Bryant's Lambda-Phi Chapter of Tau Kappa Epsilon (TKE) completed a 100 mile Keg roll to benefit St. Jude Children's Research Hospital. The fraternity managed to collect \$2300 in pledges which was subsequently donated to St. Jude's to aid in research that may someday help put an end to a number of catastrophic childhood diseases.

On September 14th, TKE President Peter Smith was notified that Bryant's Lambda-Phi Chapter would be this year's recipient of the "Keg Award." The award is presented each year to the chapter which raises the most money per man for St. Jude Children's Research Hospital. Considering that 130 TKE chapters around the country ran Keg rolls last year, this is quite an honor. Robert Wentworth, Executive Assistant for St. Jude's is currently having the award engraved and

TKE will be receiving it in the very near future.

The brothers of Tau Kappa Epsilon take great pride in receiving this award and they would like to extend thanks to their many friends and sponsors who made it all possible. First a very special thank you to Wayne Distributors and the Miller Brewing Company who provided a van and driver, promotional sweatshirts, hats and refreshments for the Keg roll. Wayne

Distributors made a \$100 pledge for the event as well. A word of thanks is also extended to the administration, faculty, fellow Greeks and the entire student body for all their help and pledge support.

The brothers of TKE anxiously await this year's Keg roll with hopes of even surpassing last year's record donation. There is little doubt that this dream will soon become a reality as well.



Members of Tau Kappa Epsilon fraternity pose with their keg just after completing the keg roll last May.

Study with us.

By Bill Henry

Exam time is rolling around and the Class of '86 wonders what will the first round of tests here at Bryant be like. Many of you are saying "I'm confused. I don't know my Accounting. Nothing is balancing out correctly. What should I do?"

You should "Come Study with Us." Yes, Come Study with Us is a well established program, organized by the New Directions Association under the Direction of the Learning Skills team, in which upper classmen volunteer their time to answer those confusing questions. Two different subjects are handled on one night.

The New Directions Association is proud to present the first "Come Study with Us"

session on Monday, September 27th. The subjects that will be covered are Economics and Computers. Economics will be in the 3rd floor South Lounge of the New Dorm, while Computers will be on the 3rd floor North Lounge.

The second session is scheduled for Wednesday the 29th. The subjects being covered are Accounting and Math. All "Come Study with Us" sessions will be held in these lounges on Wednesdays unless announced otherwise, and each session is held from 7 to 9 p.m.

For further information please contact the following New Directions Association members:

Robin Waters - Learning Skills Team Leader, Bill Henry, Ken Jalbert, Frank Kelly, Paul Magoulas, and Don White.

Find your UCB

By Barbara Day
Of The Archway Staff

Has your buddy been found yet? By now everyone who signed up to be a UCB and all of you who are freshmen should have received notification of who your buddy, or buddies are. Hopefully, most of you have even met them and have gotten to know a little about them.

The Upper Class Buddy Program is in full swing with our planning of events for both this semester and the Spring semester. The first event planned is our annual Picnic on October 7th, with the rain date set for the 8th. There will be all sorts of activities for everyone to participate in, so if you haven't met your buddy yet, you should meet them before the Picnic. There will be UCB T-shirts and picnic tickets on sale for \$4.00 and .50 respectively (this includes raffle tickets). Look for these items in the Rotunda starting the 27th.

The Upper Class Buddy program can work well and give everyone who has a buddy the chance of making another friend. Your buddy may become someone who you will feel comfortable to lean on, someone you can share good times and laughs with, or possibly a very close friend who you can talk to.

For those of you who have not yet received notification of their buddies, and for all the commuters who either signed up for the program or are freshmen, please stop by the Senate Office anytime and leave your name, dorm/Room #, or address and phone number. We will get back to you immediately. Also, if your under class buddy is a commuter, their local address is available in the Senate Office.

Remember, you do not want to lose out on meeting your buddy, and missing out on any of the upcoming events. So, be sure you find your buddy, and we'll see you at the Picnic.

VOTE!



Voter Registration

All students, faculty and staff: Voter registration will take place in the Rotunda on Friday, September 24 from 10 a.m. - 2 p.m.

Bras n' bikinis in the T-bowl

How many parents sent you to college to find a black lace bra or a mens black bikini? These are just two examples from the zany list of items handed out at the Tupper Bowl Scavenger Hunt Tuesday night.

Dorm 14 North ran away with a ten item lead earning them the 10 first place points. Dorms 10, 11, and 12 all tied for second place giving them 7 points apiece. While the 5 third place points were snatched by Dorm 9. Dorm 14 South and Dorm 7 are sharing fourth place, each receiving 3 points and Dorm 8 earned the 2 fifth place points.

Every dorm that participated in Tuesday's fun filled event will receive one point toward their total Tupper Bowl score. The point system described in this article will be sustained throughout the school year.

See your dorm representative about frisbee golf.

We regret the misunderstanding that occurred at the Scavenger Hunt. In the future we will work to prevent any recurrence of errors and misunderstandings of this nature. We sincerely hope that this incident will not lessen your outstanding participation in future Tupper Bowl events.

thank-you
the Tupper Bowl staff



Photo by Wendi Parker

Compare
We've got the
lowest price in
town for
photo typesetting
your resume!

\$19 - One Page Resume
\$29 - Two Page Resume
\$7 - Modified Run

You may submit a typed copy of your resume by Thursday of any week and we will do our best to have it ready by the following Monday.

**The
General Typesetting
and
Resume Service**

Tim Mueller Dorm 8 Suite 231
Coordinator (401) 232-4392

prepayment only
checks preferred



This calculator thinks business. The TI Student Business Analyst.

If there's one thing undergrad business students have always needed, this is it: an affordable, business-oriented calculator.

The Student Business Analyst. Its built-in business formulas let you perform complicated finance, accounting and statistical functions—the ones that usually require a lot of time and a stack of reference books, like present and future value calculations, amortizations and balloon payments.

It all means you spend less time calculating, and more time learning. One keystroke takes the place of many.

The calculator is just part



of the package. You also get a book that follows most business courses: the *Business Analyst Guidebook*. Business professors helped us write it, to help you get the most out of calculator and classroom. A powerful combination.

Think business.
With the Student
Business Analyst.

**TEXAS
INSTRUMENTS**

©1982 Texas Instruments

SPORTS

SMU test Saturday

Harriers look strong

By Ben Edwards
Of The Archway Staff

With twenty two members, this years Men's Cross Country team is the largest in the school's history. Co-captains Jim Forker and Art Welch, tempered veterans, will lead the Harriers this Saturday at the SMU Invitational in Massachusetts.

Coach Fred Reinhardt, not one for making predictions, feels that the team has a good chance to equal or better last year's best ever third place finish. Teams vying for the top four spots, besides Bryant, should be Fitchburg State, SMU and RIC. With a number of "surprises" on this years team, "Collective times for the top seven runners may also better last year's times."

SMU is a very flat course (60% on grass and 40% on pavement) and should set the stage for a very quick pace. Junior Art Welch, "the team's top runner," Senior co-captain Jim Forker, "a tough competitor and leading contender," the season's biggest surprise Mike Perrotta and Freshman Hank Sarazin should prove to be the top four threats for the Indians. Perrotta, a Junior from North Providence, is "very competitive" and "shows alot of desire." Freshman speedster Hank Sarazin, lat year's Rhode Island indoor 1,500 meter champion, should also be quite competitive on Saturday.

Coach Reinhardt views the remaining three

scoring spots on the seven man team as up for grabs. Some of the leading contenders mentioned for these three slots are veteran Scott Pierson, Dave Timbrell, (both Seniors) Bob E. Mitchell and "another surprise", Dean Anderson (both Juniors). Two members also in the hunt are Steve "stick man" Kostick (a junior) and freshman Charles Ferry.

Other team members competing at SMU on Saturday are Freshmen Peter Angelo, David Maher, Gary Meinertz, and Bob H. Mitchell, Sophomore Mike Conway, Juniors Mike Bradley, Bill Dench, George Spellman, and Dave Ulkus and Seniors Dave Kelley, Bob Wall and Ben Edwards.

After Saturday's race, the schedule of remaining meets is as follows:

Saturday, Oct. 2, CCSC, UNH, and SC at Central Connecticut State College.

Saturday, Oct. 9, Northeast Eight at Bryant

Saturday, Oct. 16, Tri-States at Bryant

Saturday, Oct. 23, Easterns at University of Vermont.

Saturday, Oct. 30, Northeast Division II at East Stroudsburg, Pa.

Saturday, Nov. 6, New Englands of Boston Ma.

Coach Fred Reinhardt is quite "excited about the season" and feels that "the team will get as time goes on". With it's present level of moral and team spirit this years Men's Cross Country team is indeed something to get excited about.



The 1982 Bryant Men's Cross Country team.

Women's V-ball opens

By Toni Rackliffe
Of The Archway Staff

On Saturday, September, 25th, the Women's Varsity Volleyball Team will open its fifth season with a home game against Bentley College.

The team, led by Senior Co-captains Denise Armstrong and Peggy Lohr, consists of four veterans and six rookies, all of whom have a great amount of experience.

Coach Lorraine Hudak feels confident about the team. "The team is strong as a whole, as well as individually. They all have equal ability. I could start anyone of them and feel confident. I've never been able to do that in the past," said Hudak.

This season, which includes four major tournaments, proves to be tougher than previous seasons. One reason will be a division one tournament which should help the team in gaining experience for the Regionals. According to Hudak, "This tournament can only help, if we lose it won't hurt us."

Coach Hudak is optimistic about the upcoming season, the three teams to beat are Providence College, University of New Haven, and the East Coast Champions--Springfield College.

"We'll do well within the Conference and the division," says Hudak. "The past four seasons have been winning seasons and I expect this one to be the same."

Rabbi Astrachan, Entitled "Attitudes on the current Mid-East Crisis". It gives you an opportunity to air your view about the situation. BE THERE!

Bryant Players

After the large success of last spring's production of "The Girl in the Freudian Slip," the players are now planning for Parent's Weekend. A quick, slap-stick comedy, "Why Teachers Go Nuts," is being casted next Tuesday, September 28th. New members are welcome to attend the meeting. Looks like another successful year for the Players. Get Involved!

I.S.O.

International Students Organization (I.S.O.) The International Students Organizations' first organizational meeting will be held this Wednesday, Sept. 29th in Room 355 at 3:30. Anyone can attend and join.

Jazz Band

The first rehearsal of the Bryant Jazz Band was a huge success. The number of new members has brought the size of the band to 25 people. We are looking forward to a great year starting with our first performance for Parent's Weekend. Our next rehearsal will be on Wednesday, Sept. 29th at 7:00 in the MAC Conference Room. For more information, write to Box 2603, or just stop by and lend an ear!

"THE BOTTOM LINE"

Commuting students may pick up the 1982-83 College Handbook & Activities Calendar from the Office of Student Activities, Monday through Friday, 8:30 a.m. to 4:30 p.m.

ATTENTION DEC. GRADS

If you have not filed a candidate for degree form in the Registrar's Office, please do so immediately. Failure to do so will result in a delay in your degree being ordered and having your name printed the way you wish it.

CHAPLAINS' NOTICES

THANK YOU to Diane, Tess and Karen for their work in organizing the Folk Group. Thanks, too, to those who offered their services for our Sunday liturgies!

MARRIAGE PREPARATION SESSIONS for engaged couples are held here at Bryant twice a year. Pre-registration is necessary through the Diocese of Providence and the sessions should be attended about a year before the planned wedding. Contact Dave Norris for further information. Our next sessions will be held in April, 1983

CHAPLAINS may be contacted for personal

THE ORGANIZATIONS

Ultimate Women's

The Women's Ultimate Frisbee Team will be holding a carwash this Sunday, Sept. 26th at the Smithfield Getty Station.

Rugby Club

The club would like to announce that our first home game is tomorrow, Saturday, the 25th, against U. of Conn. on the Women's soccer field. We hope everyone can come to support the team. The club suffered a tough loss to Central Ct. last Saturday, but, we're looking forward to a strong showing in front of the home crowd. Rugby queens will be selected after the game.

Also, we wish the best of luck to our freshman queen candidate Lisa Bullard who will be escorted by Herb Carr.

Finally, thanks goes to Chris Carney who endured a great personal sacrifice in order to get the rest of the team home last Saturday.

What a guy.

Hillel News

Happy New Year to all of you. I hope your holiday was a good one! At last weeks meeting it was decided that dues should be reinstated so please try to get yours in by the October 1st deadline. Don't forget - first Sunday Brunch coming up on October 3rd - details to follow. Watch for signs in the Rotunda, notes in your mailbox (put yourself on the mailing list) or other information right here. Last, but definately not least - information on Yom Kippur Services available at: 232-4088 (Debbie), 232-4162 (Bob), 766-5532 (Jeff), 232-4384 (Alexis). Or information on these services will be available at the Friday Night Services in Room C-351 at 6:30. Until next week: Have an easy fast.

HOT FLASH: Next weeks Wednesday meeting will be a discussion/interaction with

Invalids

The Invalids is a coed independent organization. We sponsor teams for almost all intramural sports offered at Bryant, as well as conduct numerous social gatherings during the year. We culminate our year with an alumni banquet, so it is a good chance to find out how some of Bryant's graduates are doing. We meet on Wednesdays at 4:00 in Room 246. Check our sign in the Rotunda for our next meeting.

Ledger

A special thanks to all the marketing students who attended last Tuesdays telemarketing project meeting. Any marketing students who were unable to attend the last meeting and are interested in gaining some good experience, feel free to attend the next meeting. It will be this Tuesday, September 28th, in Room 243 at 3:30.

The Ledger will be having meetings every Tuesday and Wednesdays at 3:30 in the Office (except Tuesday the 28th).

The Announcements...

or religious counseling anytime by calling or stopping by the Center for Student Development. Phone extensions 309 or 368.

WHERE ARE THE PROTESTANTS of Bryant College? Is your religious background Baptist, Lutheran, Methodist, Presbyterian--or any of the other numerous Protestant Denominations? If your answer is affirmative, plan now to join in the Ecumenical Worship on Sunday in the MAC Conference Room, at 4:30 p.m. Worship includes Prayer, Scripture, Song and Communion.

SENATE ELECTIONS

It's time to hold Senate elections again. Freshmen interested in holding a position are invited to stop in the Senate Office. Six freshmen will be elected to represent their class as senators. Nomination papers and additional information will be available in the

Senate Office on Monday, September 27th. If you have any questions, stop in and talk with someone.

DATES TO REMEMBER:

Sept. 27 - nomination papers available
Oct. 4 - Platforms, signatures and nomination papers due
Oct. 8 - Platforms will appear in The Archway
Oct. 12 - Speeches
Oct. 13 & 14 - Elections

TRANSFER STUDENTS

If the last transfer credit sheet that you received listed TENTATIVE credits, then you should request that your previous college or university send a final transcript of your academic record to Bryant's Registrar's Office.

Finalized credits determine when you are eligible to preregister for next semester's courses.

STUDENT RECORD

All new students who ORDERED the NEW STUDENT RECORD (the picture book of new students) can pick up their copy in the Office of Student Activities.

BLOOD DRIVE DATES

The following are the dates for the upcoming blood drives:
10 a.m.-4 p.m. on Wednesday, September 29,
Tuesday, October 26, and Wednesday,
December 1.

Blood supplies in Rhode Island are at a critical low-please help!

STUDENT I.D.'S AND ALCOHOL STICKERS

The Office of Student Activities will be taking student I.D.'s and giving out Alcohol Stickers throughout the school year, Monday through Friday, 9 a.m. to 4 p.m. All students must have the correct College I.D. by October 1, 1982, to gain access into any event where alcoholic beverages are served. As a student turns 20 years of age, they must have a new I.D. taken. Students who are receiving an alcohol sticker or an over-20 I.D. must present a photo proof of identification (driver's license, Saga I.D., etc.) at the Office of Student Activities.

Women's C C on the move

By Anne Quill
Of The Archway Staff

Watch out! The 1982 Women's Cross Country team have proven that they are not to be taken lightly. After only two weeks of practice and a lot of hard work the girls ran to their own victory claiming second place in the Bryant Invitational meet held last Saturday. The pre-race favorites were Bridgewater State and Eastern Connecticut College, but Bryant defeated the favored Eastern along with seven other schools. The girls are coached by Charlie Mandeville who was quite excited about the results of Saturday's race. "We worked hard all week and I knew we'd do well against teams in our caliber, but I didn't quite expect a second place finish. I was really only a little surprised through because we have a good team with a lot of good talent."

Bryant had two runners finishing in the top ten. Freshman jet, Lyse Wante was the fourth girl to cross the line with a time of 20:44, just off the school record. Veteran runner Sue Jensen finished ninth overall in 21:35 running one of her strongest races yet. Bryant then got its' next 3 runners in under 23 minutes with Nancy Dupre claiming twelfth place followed closely by Kathy Kieras in thirteenth. Newcomer Kathy Pfomm ran an excellent

race with a time of 22:43 and veteran track runner in her first season of Cross Country. Ann Martin finished in 23:55. Freshman Lori St. Hilaire showing a lot of improvement crossed the line in 24:25. Also showing promise for the future is Lori Miltimore who set a personal record on this course.

This years Women's Cross Country team is looking very strong following Saturday's race. The team is comprised of only four returning members which includes Senior tri-captains Kathy Kieras, Sue Jensen, and Anne Quill along with senior Nancy Dupre, who are hopeful for their best season yet. Much of the teams strength has been tapped from the freshman girls who all have run excellent for Bryant and should prove to be a valuable asset to the team. Also, Junior Ann Martin has shown her running capabilities by taking the sixth spot on the team.

Mandeville is looking forward to one of his most successful seasons, crediting the team with, "...their good attitude and not being afraid to work along with having a lot of fun. I think that because of this we'll be very successful this season." He also feels that, "...because we're in such good shape and have more capable runners we'll be better than last year; it's more of a total team effort - after all it is a team sport."



Photo by Jim Tammara
Nancy Dupre and Kathy Kieras (in background) came in 12th and 13th place respectively.

Intramural update

Football opens

By Kevin Faulkner
Of The Archway Staff

Intramural Football - The 1982 Bryant College Intramural Football season got under way as of September 20th. The Strong division is made up of nine teams broken up into 2 divisions. In division I, the pre-season favorites are Temple (no longer TYB) and Sykos, with Phi Sig and Psycho Killers favored to win Division II games and Division I favored to win Division II. Members of Division I will play 11 games and Division II 12 games with the 2 first place teams in each division, and the next 2 teams having the best records making the playoffs.

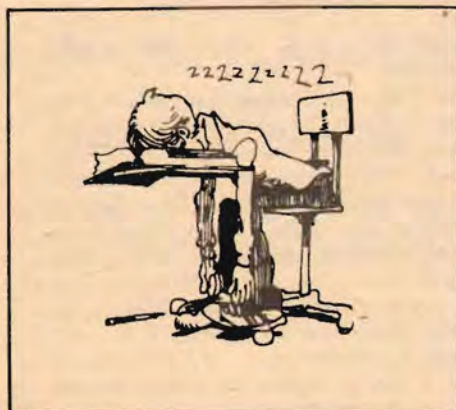
The Weak Division includes 24 teams, broken up into 3 divisions of 8. In the A division the favorites are TEP/ROTC and Loading Zone. In the B division Safari and Resurrection are favored, with Bruise Brothers being the pick of the crop in the C division. The 2 top teams in each Division will make the playoffs, with the 2 teams having the best overall record receiving 1st round bye's. Last year's winners were Temple in the Strong Division and Rebels in the Weak.

Intramural Tennis - There will be twenty participants battling for the crown of Bryant College's top male tennis player, an award captured last year by Peter Ware. Participants are asked to set up and play matches at their own convenience. There is also a team championship bracket consisting of 11 teams.

Women's Intramural Volleyball - In Women's Intramural Volleyball there has been a fine turn out consisting of 36 teams. The teams have been broken into four 9 team divisions. Favorites include: Division I - Weebles (last year's winner) and Ball Busters. From Division II- the Suite Hearts, and The Faces, from Division III- the Numbers, and the Muppets, and from Division IV-Dynasty and the B'Watchers. The top four teams in each division will make the playoffs.

If anyone has any type of problem, grievance, or question with their intramural sport, Coach Reall can be contacted during the following office hours: Monday, Wednesday and Friday from 8:30 to 4:30 p.m. and on Tuesday and Thursday from 12:00 p.m. to 8:00 p.m.

Good luck to everyone!!



Do you want to improve Saga ?

Then consider joining the newly formed



Food Operations Committee

Sponsored by the Student Senate

The committee will meet every other week with the Saga Management to discuss and improve our food service, within Salmonson and the Pub.

This will include:

- Menu Suggestions
- Arranging Special Meals
- Improving Overall Quality

Bill Kutner & John Hafferty
co-chairpersons

If interested, return this form to box 2453 or contact the Student Senate.

Yes

I'm interested in joining the newly formed
Food Operations Committee

Name _____

Box No. or Address _____

Phone No. _____

Run for Your Life celebrates Anniversary

By Ben Edwards
Of The Archway Staff

Next month, the "Run for your life" program will celebrate its one year anniversary at Bryant campus. Begun in early October 1981, the program currently has 25 participants and is always seeking new members.

"Run for your life" is a prospectus of aerobic exercise open to all students, faculty, administration and staff of the Bryant community. It is co-sponsored by the Department of Military Science and the Bryant College Athletic department. Unlike most exercise programs, that are easily abandoned, "Run for your life" contains a three phase process that can be geared to both the beginning and seasoned runner. An award system to add motivation and recognize achievement is also used to encourage members to continue in the program and thus achieve a greater level of physical fitness. Award certificates and patches are issued when participants complete a designated number of miles. The following mileage totals qualify for awards: 50, 100, 200, 300, 400, 500, 750, 1000, 2500, 5000, 7500 and 10,000.

Joining the "Run for your life" program is easy. Registration forms, running programs, distance and certification sheets and instruction can be obtained from Captain Jim Koch in Room 370 or from Charlie Mandeville in the Main Gym training room. As mentioned earlier, "Run for your life" has three distinct running programs that one can enter. These three programs (or phases) are the Preparatory phase, the Conditioning phase and the Sustaining phase.

The Preparatory phase is tailor made for non-runners or beginning runners of any age who wish to attain greater physical fitness through aerobic exercise. This phase contains a six week schedule consisting of first walking,

**Awards Earned
By
Run For Your Life
Members To Date**

<p>50 Mile Club Sheila Josephson Jean Martinelli Jeff Hull</p> <p>100 Mile Club Capt. Jim Koch</p> <p>200 Mile Club Major Dennis Kennedy Bill Henry Dave Timbrell</p>	<p>300 Mile Club Constance Cameron George de Tarnowsky Vin Doyle Sue Spencer Scott Pierson</p> <p>400 Mile Club Anne Westdyk</p> <p>500 Mile Club Robert Maxey Ben Edwards Chris Milne</p> <p>1,000 Mile Club George Spellman</p>
--	---

then walk/run combinations designed to increase stamina. This programs easy pace makes it ideal for anyone interested in beginning a consistent exercise routine.

Beginning a program of aerobic exercise is

very advantageous. It can result in development of the heart, lungs and circulatory vessels. This strengthening of the cardio-vascular system can prevent coronary disease, aid the body in dealing with physical

and emotional stress and just plain make you feel better and healthier.

The second phase one can enter, the Conditioning phase, is well suited for beginning runners of all ages who wish to improve their endurance. This schedule, which lasts 9 weeks, provides distances ranging from 1-2 miles and slowly progressive time goals. The Conditioning phase provides adequate preparation that will enable one to reach the third or Sustaining phase, where maximum mileage allowed per day is 5 with a time goal of 8:30 per mile.

The "Run for your life" program at Bryant was initiated by the Department of Military Science and is managed by the U.S. Army Infantry School (USAIS), Fort Benning Georgia. The USAIS maintains a master file of participating schools, arranges funding for the program and creates and distributes awards. The Bryant College Athletic Department, also very involved in the program, is responsible for providing measured running areas, distributing and collecting forms (along with the Military Science Dept) and providing space for the posting of achieved goals and other program notices. Individual records for the program are maintained by the Military Science Department.

Any and all members of the Bryant Community interested in running the road to greater physical fitness should consider joining the unique program. Additional information, registration forms, and mileage logs can be obtained from either Captain Jim Koch at the Military Science office (Room 370) at extension 275 or Charlie Mandeville at the trainer's office (extension 404). Incidentally, joining the program is absolutely free, the only cost being your time and effort. At a price like this, isn't it about time you did something good for yourself? Run for your life ... you couldn't do it for a better person



Are you wasting your time here?

By Toni Rackliffe
Of The Archway Staff

Do you find the clock runs your life? There aren't enough hours in a day to accomplish what you set forth to do? If you answered yes to either of these questions, you should consider using time management.

What is time management? It's a plan of attack- how are you going to fit all of your activities into one day, week, month...

Time management is based upon five principles established by Lakien and Cambell and adapted to the college students' and more specifically, the Bryant students' lifestyle, by Berta Hysell of the Center for Student Development.

The five principles are:

1. Plan and Budget your time.

Take charge of your time. Be the decision maker. According to Mrs. Hysell, you must learn to "budget your time like money." Regardless of how busy you are, take time (10-15 minutes) everyday and make a schedule for your activities. Keep this list visible and use it as a guide.

2. Internal Prime Time

This is the time you think most clearly. For the next couple of weeks examine your activities and behavior and decide when you are most aware. When you've established these times, use these for studying. Save doing your laundry, cleaning...for your non-prime times.

3. External Prime Time

This is the best time to attend to outside activities (ie. clubs, sports, conferences) and other people- when they are available.

4. Flexibility

Although you should attempt to stick to your schedule as closely as possible, do not be afraid to change it. Every day leave one hour totally uncommitted. Emergencies do arise and you should not be afraid to take care of

them. "However, do not overindulge in uncommitted time," says Mrs. Hysell. "Then the purpose of the schedule is lost."

5. Reward

Always buildin time to relax and enjoy yourself. Strictness and rigidity, without variation, tends to make most of us frustrated- life becomes a chore. This is NOT the purpose of time management.

Who uses time management? Everyone benefits from time management. We all have to budget our time.

According to Mrs. Hysell, everyone must set their own priorities. You must know your present capacities, strengths, and areas which need improvement.

"Now is the time to set your goals and think how to budget your time to achieve these goals," said Mrs. Hysell.

Time management can allow you time for both work and play. Mrs. Hysell emphasized, "You don't lose your freedom from time-management but gain more from it."

Successful upperclassmen are that way because they know how to set their priorities and budget their time effectively.

"Don't try to fool yourself," says Mrs. Hysell. "If you plan on playing raquetball on Wednesday from 3-5PM, don't schedule yourself to study for Thursday's accounting quiz at that time."

Berta Hysell has been with the Center for Student Development for five years. She is well aware of the students' lifestyle. If you have any further questions, workshops on time management will be held. Contact the Center for Student Development or Berta Hysell.



missing...

THE FIRST AMERICAN FILM
BY COSTA-GAVRAS.
BASED ON A TRUE STORY.

JACK LEMMON SISSY SPACEK

Sunday Sept. 26
2, 7, & 9:15
Auditorium
Adm. 50¢ non-Bryant \$1.00

Sunday Paper Deliveries

Get the Boston Globe, Boston Sunday Herald
or New York News delivered to your room!

Please Check:

Boston Globe	\$5	per month
Boston Sunday Herald	\$4	
NY News	\$3	

NAME _____ **BOX NO.** _____

DORM/ROOM _____ **TEL.** _____

RETURN TO: Box 1619 or Sunday
Newstand in front of Dining Hall.

Any Questions Please Call: 232-4318

FRIDAY

SOUTHSIDE JO & THE ASBURY

ROCKTOBER FEST WEEKEND

SEPT. 29 - OCT. 2nd
WED.

WINE & CHEESE
with BRUCE AND
MARSHALL

SATURDAY
Mixer 20 and Over
in the PUB
with MERTZ BROZ.

JOHNNY
JUKES



\$7.50 Fulltime Undergrad
(in advance ONLY)

\$8.50 Guest & Day of Show

"Archway" history: past and present

By Joe Zukowski
and
Robin DeMattia

Have you ever wondered where that rather large piece of metal that stands between the two reflecting ponds came from?

The arch, the symbol of the ARCHWAY, is a remnant of the old Bryant campus, which was located on the east side of Providence. It was the entranceway of a building known as South Hall, one of the old Bryant campus.

The building was constructed in 1905 by Isaac Ladd, for his newlywed bride. The building cost Ladd \$1 million, and was constructed during the couple's honeymoon. Ladd was an associate of U.S. Steel tycoon Charles Schwab.

When the couple returned from their extended trip, the bride was taken to the building, and reportedly refused to enter because the building was so ugly. Shortly after Ladd committed suicide.

The property remained idle until purchased by Thomas Marsden, who turned it into Hope Hospital. At this time an addition was put on. This addition later housed Bryant classes.

Bryant was formed on January 14, 1863 by Dr. Henry Stratton and H.B. Bryant as part of their Bryant and Stratton chain of international business colleges. The college was founded as Bryant-Stratton, and Mason's Model Commercial College.

In 1916, the General Assembly of Rhode Island authorized the school to award degrees. In 1920, when the first degrees were

issued, the name was shortened to Bryant-Stratton College.

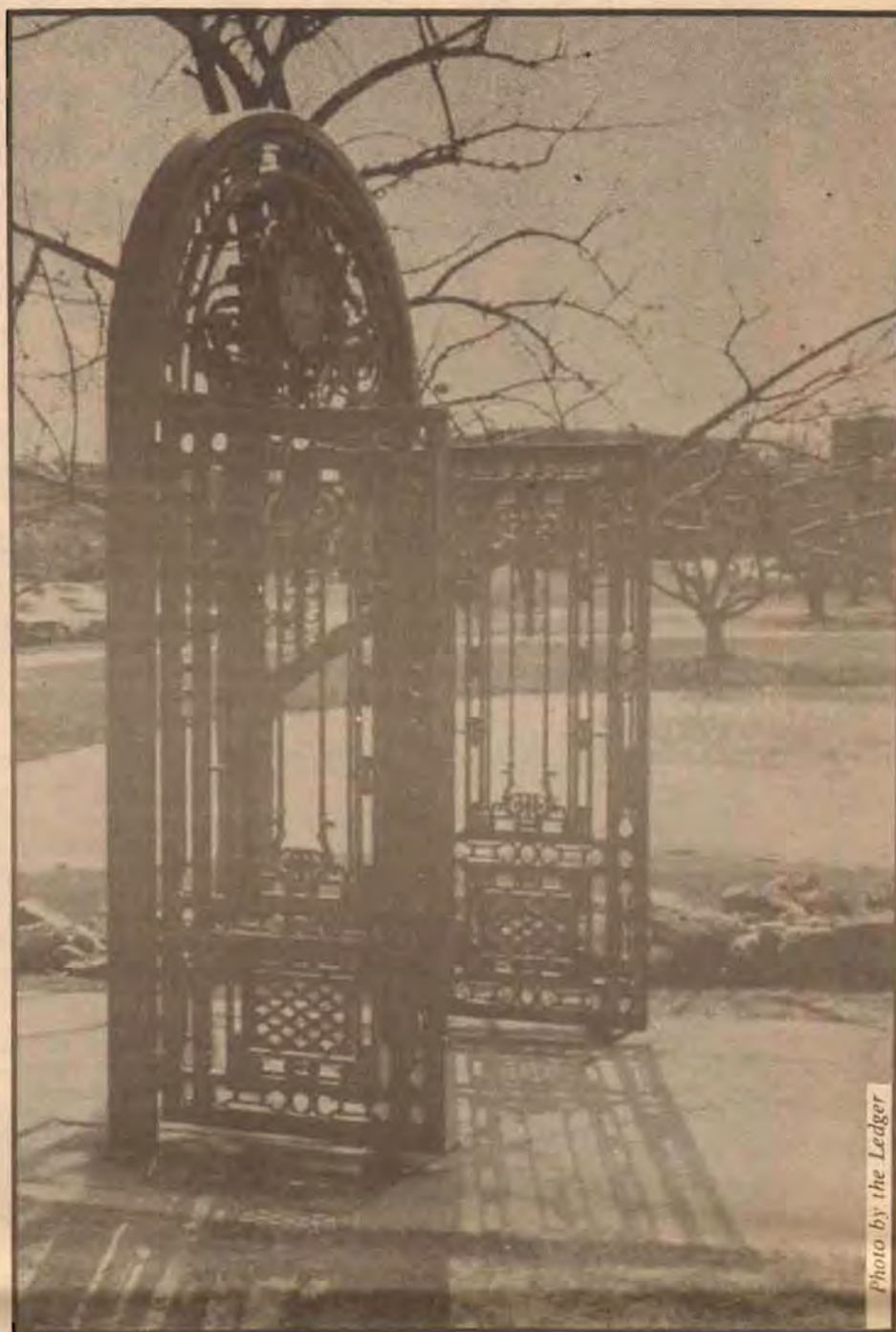
In the fall of 1935, the college moved the Gardner Building in downtown Providence to the east side, moving into the former Hope Hospital building on Young Orchard Avenue. They named the building South Hall. At this time the name of the college was officially changed to Bryant College.

On October 24, 1967 Earl Tupper (a Tupperware fame) made an outright gift of his 220-acre estate in Smithfield. Tupper said, "I'd considered a lot of different possibilities for the land, and none of them quite has what it takes." "Bryant College is the kind of school that is providing a type of education very much needed, so you like to give something to a school like that," he continued.

The campus moved to Smithfield in September of 1971, and the arch was taken out of the South Hall entrance and brought to Smithfield as a link to the old campus.

At that time, the start of classes was delayed to allow the move to the new campus. "We did the move in one day," remarked Richard Alberg, Dean of Academics. "One day I was sitting in my office in Providence, the next day I'm up here." Alberg said that only half of the Unistructure was in use at that time, and some classrooms and the upper half of the library had to be used for office space.

The arch was put into the walkway leading to the Unistructure, between the two reflecting ponds. Each May the graduating class traditionally walks through the Arch as part of the graduating ceremonies.



The "Archway" as it now stands.

Photo by the Ledger

Bid system explained

If you're confused about how many points to bid for an interview, YOU ARE NOT ALONE. Many seniors are having some difficulty deciding HOW MUCH TO BID. The mechanics of the bidding system seem to be quite clear to students; it's deciding the number of points which is the problem for most.

The Career Services Office has developed the following guidelines to assist you in making your decisions.

1. Review ALL COMPANIES recruiting throughout the semester.
2. Decide which companies and training programs you have an interest in.

3. Set your priorities -- pick a few employers according to the specific jobs they are recruiting for.

4. Aim to interview with your first two choices -- then use extra points for others. So, bid HIGH for your first choice, and MEDIUM TO HIGH for your second choice. Bid LOW for all others.

HIGH BID is 200 and above points

MEDIUM BID is 100 to 200 points

LOW BID is 100 and fewer points

Remember, the lowest bid necessary to make the schedule will be posted during the final interview schedule posting.

"Fantastick" series opener

by Kevin Flanagan
of the Archway Staff

On Sept. 19, 1982, the Bryant community was treated with an outstanding opener for the Performing Arts Series, presented by Daudelus Productions. The show was "The Fantasticks" and truly kept up to its name.

There was a full house for this charming production, highlighting the pain and joys of life and love. The show's main message of letting love take its natural course was delivered delightfully in song and music.

Daudelus Productions did a fine job in

screening their cast, as they were all true professionals and as characters, very believable. Although the entire group is to be commended, one actress deserves extra praise, Chiara Peacock, who portrayed "the girl" in an almost flawless manner, sang with such delicacy and range was, if you'll pardon the pun, fantastick.

The Office of Student Activities should be cheered for bringing such a high level of culture and talent to this campus. If "The Fantasticks" is a clue of what is to come from this committee, then this campus is extremely lucky.

Clean your room lately?



The entrance to South Hall when the Arch was part of the edifice. It was taken out and moved to Smithfield in 1971.

Bryant Archives photo

the inquiring photographer



Carol Kieran & Paul Gimlewicz: "Funnels, Huka's & round the world."

Question: "What are the things that would make up a perfect weekend?"

Photos by: John Morin
Interview by: George Spellman



Patty Mueller & Carol Vitale: "Beer, Beer & More Beer."



Lori Nelson & Peggy Lohr: "Doctors Party".



Steve Harrold & Dennis Walton: "One that takes the whole next week to recover."



Sue Barber & Janice Bossian: "Waking up Monday morning and not knowing what happened."



Kim Carter & Jeff Cohen: "Happy Hours & Togas."

PJ is the new weekly, student oriented advice column in The Archway which will be directly used to solve any problems you might have. Our male/female team will analyze your questions about school, life, sex--or the lack of it, relationships, hang-ups, or anything, that you can think of. Every letter that we receive will be promptly returned once a solution is determined to your problem. If nothing else, it should be very interesting, and hopefully, helpful to you. So, give PJ a try. It could put your life back in the right direction. Write to us c/o The Archway Box 37.

Attention:

Due to problems with the mailing list, The Archway's subscriptions have not been mailed yet. The problem will be corrected soon and subscribers will then receive all of the back issues.

How's your week been?



Become A BRYCOL Director...

Put your knowledge and talents to use! Express your ideas! Gain Business Experience! Become a BRYCOL director.

BRYCOL is now accepting applications for both regular director seats and senior seats. Applications may be picked up at the BRYCOL House weekday afternoons between 11 and 5. Deadlines for applications is Monday, September 27, 1982.

For more information, call us at 231-1220.

Get Involved!

THE LIBRARY IS BACK

"The Fun Spot Of The 70's Returns"

Open Daily At 3 p.m.
Ultra-Modern Gameroom
Happy Hour 3-7

The Best In Live
ENTERTAINMENT
"Unbeatable Nightly
Specials"

Don't Miss Our Friday
Afternoon Happy Hour (3-7)
Beginning Oct. 8th "With Cape Cod's Finest
Performers"
"Smith & Sullivan"



Rt. 7 Smithfield, R.I.
(1/2 Mile From Bryant College)

231-0230

Bryant to host B-ball tourney in December

By Rick Morenzoni
Of The Archway Staff

Under the direction of Athletic Director, Leon Drury, and Sports Information Director, John Gilooly, the Bryant College Basketball Team will host the first Cumberland Farms Classic. The two day event will take place December 2nd and 3rd at the Providence Civic Center. Three leading NCAA Division Two schools, Cheyney State of Cheyney, Pa., New York Tech of Old Westbury, Long Island, and Elizabeth City State of Elizabeth City, North Carolina, will join the host Indians.

The classics will be a yearly tournament designed to expose Southern New England sports fans to three of the top Division Two teams in the country. (The Classic hopes to satisfy some of the needs of people involved with Bryant College). First of all, it allows for a greater amount of alumni and commuter students to attend a Bryant game. Previously, many commuters and alumni found it an inconvenience to travel out to Smithfield, especially if they had attended classes here on that day. But now, for at least once a year, these people that live near Providence will find it much more accessible than coming to the campus.

Having the tournament in the Civic Center is another bonus, as it gives a certain prestige to the event that wouldn't exist if it was held at Bryant. The Providence Civic Center is recognized as the local point of college basketball in New England, especially since it

regularly hosts regional games in the NCAA Division One Tournament.

Probably the biggest advantage of the Tournament is the boost it will give to Bryant basketball. Without a doubt it is the biggest invitational tournament among the Division Two schools, and the response of

schools throughout the country has been very favorable. Of the approximately 20 teams invited, all said they would like to come, but due to the scheduling difficulties they couldn't make it. Only Elizabeth City State was able to work around their schedule.

All of this could not be possible without the

help of Cumberland Farms. Their support was the key factor in determining whether or not the tournament could take place. Two of the men mainly responsible for Cumberland Farms' participation have been affiliated with Bryant. Vice President Frank Alger, a Bryant graduate, and Chairman of the Board James Haseotis, who received an honorary degree from Bryant.

Largely due to the participation of Cumberland Farms, the ticket prices will be very reasonable. In addition to the reserve seat prices of \$3.00 and \$4.00, Cumberland Farms will offer special reduced price coupons at each of its Southern New England area stores. Bryant students will get a further reduction in price, as much as half off of regular price. Also, buses will be run from Bryant to the Civic Center for resident students.

Already, two other teams besides Bryant have been invited to next year's tournament, with the fourth team to be announced later. One of the two teams invited is Kentucky Wesleyan, of Owensboro, Ky. Wesleyan is the only active Division Two school to win as many as four national titles. The other school is Mount St. Mary's of Emmitsburg, Md. The only Division Two items with at least one 1st, Mountaineers join Kentucky Wesleyan as the only Division Two teams with at least one 1st, 2nd, 3rd, and 4th place finish in national post-season play. The histories of these two teams, as well as the reputation of the three teams in this year's tournament, should help Bryant make this tournament a successful one for this year and years after.

Dec. 2-3



**cumberland farms
classic**

Prov. Civic Center

Men's soccer team opens with loss

By Tom Zoda
Of The Archway Staff

The men's soccer team opened up their season on September 15th with a tough 2-0 loss to Brown University.

Though the team lost, the score is not a true indicator of the ability with which the team played. Bryant played excellent defense against a very quick Brown offense. An important note also is that Bryant was without Andy Hardy who, along with Mario Macera, makes up the heart of Bryant's ball handling offense. Chances that were not capitalized on an offense would have been converted with Hardy in the lineup.

Along with Brown, Bryant's other tough opponents include Central Connecticut and the University of Hartford. Such competition

has served only to increase the confidence of the team and Coach Lou Verrochi.

Stated Coach Verrochi, "I see us being in every game all the guys, and especially the starting freshmen, have shown a confidence and coolness under fire."

Bryant's next game is against R.I.C. on Sept. 22nd, a team which possesses good technique, but a team against which, the guys feel, aggressive play will prevail.

Bryant opens up a three game homestand starting September 28th against W.N.E.C., and with games on October 2nd & 4th against A.I.C. and Southeastern Mass., respectively. These are, of course, important games for the team and fan support will go a long way towards the guys winning the games, they have the ability. What they need now is the people.

Golf team fifth as Hallet wins

By Rick Morenzoni
Of The Archway Staff

Bryant College Senior Captain, Jim Hallet continued his amazing streak of fine golf by capturing the Yale Invitational last weekend.

Hallet, who capped a fine summer of golf by reaching the semifinals of the U.S. Amateur, fired a three day total of 215 over the tough par 20 Yale Country Club in New Haven, Connecticut, leading the Indians to a fifth place finish out of the 25 teams.

Bryant, with a team total of 931, was one of the only two Division Two schools to play in the predominantly Division One school tournament. The tournament was won by William & Mary University, with a team score of 905. They were followed by Connecticut, 921; Temple 924; Central Connecticut 927;

and Bryant. Other Rhode Island schools that competed were URI, which placed 20th, and Providence College, which came in 25th.

Hallet's scores of 70, 72, and 73 were enough to capture medalist's honors over Regan O'Rourke of American University, who carded a 217 total. The next closest finisher was at 222, seven strokes behind Hallet.

Other Bryant scores were Bill Walthouse, 229; Bob Dimattie 247; John Jepson, 247; and Mike McKenna, 256, who broke his putter midway through the last round and had to finish without it.

The Indians will be trying to recapture the New England Intercollegiate Golf Championship next Monday and Tuesday in Pittsfield, Mass. In addition, Hallet will be seeking to win his fourth individual title, a feat which has never been accomplished.

Faces in the crowd

**Baron
at
Bryant**



Photo by Rick Levin

Baron Friederch Von Dungern, the Consul General of the Federal Republic of Germany, left, greeted by Glen Camp, Associate Professor of Social Studies. The Baron visited Bryant while touring the area.

Accounting scholarship winners



Maryann and Carol Pernorio were both recently awarded accounting scholarships. Maryann, a Junior, received one from the Rhode Island Chapter of the American Society of Women Accountants. Carol, a Senior, received one from the Rhode Island Society of Public Accountants.

Like to Catch the Action?



**Become an Archway
Photographer!**

Meetings every Monday
at 4 p.m. in the Archway
Office (located on the 2nd
floor of the MAC).

LOST HORIZONS

5 o'clock as the dark draws over
The sunset giving its last held gleam
Silently standing; a stander-by
A lonely outsider it seems

Gazing out over that horizon
Wanting to follow it and see
'Cause there's nothing here for me anymore
And that's the place I long to be

Lost Horizons last forever
Shattered dreams that never die
I know there must be something better
But when you're down that's where you'll lie

Somewhere out past that horizon
There must be a place for me
But though I strive so hard to reach it
It just disappears in front of me

But I keep following that rainbow
I keep following that dream
Where is that big pot of gold
When will I hit the cream

But nighttime is closing fast its curtain
Leaving me all alone again
Another day flown by: another dream gone by
In those lost horizons

Bryan C

The Artist

When you're an artist
You know rejection well
Failure is an old companion
Found in perpetual darkness
And clutched in the mist of the mind
Days are filled with unhappiness
And gentle reflections on past mistakes

The artistic life leaves you lonely
With your third eye which allows you to see so
much ugliness
And alienates you from others

You see I know the artist well
He is the brother of my soul
He sits in his room and writes poems of
isolation

In which he runs
Quiet hours of despairation
Waking with the sun
Artist searches his soul for inspiration
and finds none
And finds none
His thoughts go back to an earlier reservation
And he asks what deeds have been done?

And I don't know much
But, I know that I love you.

By Steven Brown from "A Little Bit Of Me In Each of
These"

Break the Chain

It starts out so slowly,
the aches and the pains
Your feelings lie hidden
like a ghost bound in chains

You fear the unknown now,
and hide in a box
Someday you'll escape when
they fasten the locks

But that time never comes and
you must make a stand
Break lose from your bondage
become a new man

Discover a world that
you knew not before
Travel life's narrow pathway
as you walked it before

And you won't be afraid when
that path someday ends
then your back in that box where
those chains bind again

By B.

Accounting Career Day

Monday, September 27

3:30 - 5:00 p.m.

Room 386 A & B

Representatives from public and private
accounting will share insights into their
professions and answer your questions.

Sponsored by the Career Services Office
and the Accounting Association.

BEGINNER OR ADVANCED: Cost is about the same as a semester in a U.S. college. \$1,189. Price includes jet round trip to Seville from New York, room, board, and tuition complete. Government grants and loans available for eligible students.
Live with a Spanish family, attend classes four hours a day, four days a week, four months. Earn 16 hrs. of credit equivalent to 4 semesters taught in U.S. colleges over a two-year time span! Your Spanish studies will be enhanced by opportunities not available in a U.S. class.
Standardized tests show our students' language skills superior to students completing two-year programs in U.S. Advanced courses only.
Hurry, it takes a lot of time to make all arrangements.
SPRING SEMESTER: Feb. 1 - June 1 / FALL SEMESTER: Sept. 10 - Dec. 22 each year.
FULLY ACCREDITED: A program of Trinity Christian College.

SEMESTER IN SPAIN

For full information—write to:

2442 E. Collier S.E., Grand Rapids, Michigan 49506
(A Program of Trinity Christian College)



GET YOUR CAREER OFF TO A FLYING START

It takes four years to get a college degree. How long will it take you to get a good job?

If you haven't settled on a company or corporation yet, why not get your executive career off to a flying start as an aviator in the United States Air Force? It's the finest flight program in the world, the pay is excellent, and you'll enjoy the prestige that goes with the silver wings of an Air Force aviator.

It's one of the finest opportunities in the nation. And a great place to gain executive experience with million dollar responsibility. Find out today about the Air Force flight program. Contact Captain Kevin L. Reinert, 413-557-3898. Call Collect.

**AIR
FORCE**
A great way of life.

THE CLASSIFIEDS

Student Employment



Off-Campus Student Employment

Available off-campus part time positions as of September 21, 1982 in the Student Employment Office (located in the financial aid building).

NOTICE TO ALL STUDENTS who have applications on file: If your phone number is not on file with us by October 8, 1982, your application will be placed inactive.

Security, Providence and surrounding areas, flexible hours, \$3.35 to start, must be over 18 with no police record. (code #2).

Home and Business Security Plan sales, Providence and surrounding areas, 25% commission, flexible hours, (code #194).

Financial Analyst, Warren area, 20 hours per week, Mon.-Fri., \$5.50 per hour, Acct. or Finance major, Jr. or Sr., (code #238).

Statistical Typing, Lincoln area, 8-4:30, Mon.-Fri., \$5.00 per hr. must have had some experience in statistical typing and duplicating machine, (code #242).

Accountant, Warren area, 20 hours per week-flexible, Junior-preferably RI resident, pay-open, (code #243).

Waiters/Waitresses with some food prep, Weekends-flexible, minimum to start, (code #249).

Waitresses, No. Providence area, flexible hours, must be here for summer and vacations (code #252).

Bartender, No. Providence area, flexible hours, must be dependable and in RI for vacations, (code #253).

Waitress, Lincoln area, approximately 30 hours per week, late morning shifts, \$3.35 plus tips, (code #256).

Sales and counseling, surrounding area, training will take place in Warwick, pay-negotiable, flexible hours, (code #259).

Vendors, Foxboro area, weekends only, selling a food product at well known stadium, 3-4 hours per day, \$30-\$50 day, (code #260).

Sales/Cashier, Providence area, Flexible hours, minimum, will train, (code #261).

Sales representative, Lincoln and surrounding areas, flexible hours, 15% commission, (code #262).

Secretary, Providence area, 3 hours per day, 5 days per week, minimum, must be able to type 60 wpm, (code #264).

Sales positions, Cranston area, selling word processing services, flexible hours, 10% commission, (Code #267).

Clerk, East Providence area, some light typing, filing approximately 20 hours per week, flexible hours, (Code #268).

Store cashier, Warwick area, must be creative and be capable of working a cash register, evenings and weekends, (Code #269).

Ushers/usherettes, Seekonk area, flexible hours, evenings and weekends, (Code #270).

Life Guard, No. Providence, RI certified, Mon-Fri, Morn or Afternoon, \$3.75/hr., (Code #273).

Accountant, Cranston area, senior, fall semester, Mon-Fri, approximately 20 hours per week, (code #274).

For Sale/Rent

3 Rooms left available-Woonsocket North End Residence Includes private gym and/or use of grand piano. Call 762-6418 and/or 333-2112.

Cottage for rent-Wilson's Reservoir, Rte. 100, Pascoag, RI. 3 bedrooms, fully furnished. No utilities, except water. Looking for a group. Call now 762-6418 and/or 333-2112.

Personals

Julie, welcome to the suite!! Barbara

You guys, how much will power do you have when it comes to double stuff?

Anne, I bet those cookies (and cake) were no caloric tool!

Maria, by the way, I'm not mad at anyone anymore.

Julie, weren't the weddings good?

I think we should remember the jar more often you guys!

Remember, be nice to herby, or he won't last!

Julie, will we need to buy more pretzels soon?

Guess what, I survived the first 10 days! (not including colds, etc.)

You're right, it was a dive.

It had no floor.

The manager was a mechanic

Kevin-You'd better be careful next time you pass out.

Cute legs!

Welcome to Massachusetts?!!

Thanks Harvy & Donna-4 stranded girls.

I've never felt like this before. I hate to write it down.

Beware of slippery carpets.

Come to the Groundlings Video Palace, Dorm 8, 310's

Phil, why are you walking funny?

Dave-thanks for the burst of spring!-Z. Nast

Lil-are you the pillar of health?

Jo-Dainty much?

John-the nest has calmed down!

Faces-did you have "fun" filled weekends?

Anne, Lisa, Judi, Barbara & Julie-The "Cookie Monster" strikes again!

2 kags in 1 hour! The Groundlings do it again!

Jen-how drunk were you?

We are the Busch Men of Dorm 10-The Mongrel, Jungle Jim, Busch Dr., Busch Coach, Elmo, & John Doe

Warning: Watching Marlene in her shorts can be hazardous to your health.

Robyn: Happy Birthday Butch

Marlene: The Busch Men want to tie you down and abuse you!

The Busch Women don't eat quiche; they are real men.

Patty and Co.--cut the crap with the personals; gag me with a spoon.

Head for the mountains of 10, with the Busch Men!

Hubner, You own a dress?

I didn't know truckers dress up!!

Steve, I don't care what you think, but you are a big, yellow bumblebee

Ace trucking how hiring-all male applicants wanted.

Visit Dorm 2-"As the TKE turns"

Colossal Entertainment Experiences will often get large yellow bumblebees who are improperly dressed in trouble with Marci & The Stonecrushers.

Murf-but yellow elephants on a pink shirt?

Jodie D.-Hello my name is blank.

Dan, drink from a shoe much?

MBK welcomes a new member

Let's go alcolestes!!

Go ROTC & Walk on walls!

Hubs, how are your nubs?

Sal, have a great weekend!! MBK

Do you have "widow" socks?

Are your socks gay or lesbian?

Who sleeps with apples?

Joe, to bad your purple teddie just hangs on the wall.

The winning weeblettes!

Set, Set! Don't Bump

Pam, see any mating nibblers lately?

Lynn-you're by suite!!

Staci-is it really that bad when you're still a ----?

Jenny & Jane-has wine and cheese wicked good!

Fritos Crispy lights at 3:00 a.m.

Brends-you're such a high scorer!

Vig-how doughy were those crackers?

Hey hitman, how did ya get that cold!

Suite 430's--girls are frustrated they need help

Thanks sis-Dinner was great-Lou.

Sue & Joan, has snoopy delivered messages from any final exam bouncers lately?

To the pope: Daniels here we come! Love Popette.

To the crows nest: Miss ya all. Love Lu-Lu

Dottie-watch out-Kristin

Diane-cleaning the floors is a useless job

Top of ten-you all are wearing me out! The freshman of the suite

Bryant Cross Country	Bryant Cross Country
Bryant Cross Country	Bryant Cross Country
Bryant Cross Country	Bryant Cross Country
Bryant Cross Country	Bryant Cross Country
Bryant Cross Country	Bryant Cross Country
Bryant Cross Country	Bryant Cross Country
Bryant Cross Country	Bryant Cross Country
Bryant Cross Country	Bryant Cross Country
Bryant Cross Country	Bryant Cross Country
Bryant Cross Country	Bryant Cross Country
Bryant Cross Country	Bryant Cross Country
Bryant Cross Country	Bryant Cross Country
Bryant Cross Country	Bryant Cross Country
Bryant Cross Country	Bryant Cross Country

To the Sat. afternoon comfort crowd, thanks for the Party-Tom P.

Debski-thanks for the presents

Stacey M.-tossing cookies for the first time in your junior year??

Trish M., Zen K., Chris F., any of you car for a hot dog?

Raw Dogs!!

Mark G., Mary knows how to treat us right.

Jeff B. drinks BEER?

I got my feet on the floor.

Well, one of them at least.

Bedwards is a dog

Not a lost dog, but a dog very much in control of the atmosphere surrounding him.

Hey, you got a cow on your back

He's going up and up, he's going to give you a hickey...

Perhaps another drink of pickle liqueur?

S.K.-come home early on Thursday from URI

Practice what your preach.

Bill-it's nice, not good-Suds

Julie-you're learning GOOD!!

Snapping turtles always get boxed. Take the hint.

Spunky-have a good time at URI Wednesday night.

Dorm 9, 310's-have you found a wine corkscrew yet?

S.K.--you'r a loser-L,J,N

Nicole, is pain funny?

Diane: The plant looks much better in the rope than on your stereo.

Leslie: should I sue?

Diane: we better work fast....if you know what I mean. Patti

Louie: looking forward to bartending the next party with you. Patti

Dotti: Are you really joining the "party" club?

Leslie: do they really teach you that...? Patti

Dottie-I think I feel a virus coming on...

Dottie & Patti--looking forward to a "great adventure" this year...

To the guys in the top of ten: "Ah, Blow off, would ya?"

Judy K from Danbury,Happy 20th, from the authority in the suite!

Sap, hope the weekend brings birthday happiness to you!

...ucky I took duty for you! Your Co. downstairs

Kath & Jude: Which cost more alcohol or books?

B.L.-Rob's cruising you!

M.B.K. went grazing at Wright's

Dew Drop, Happy Birthday

H.B. Dew--love Doone

Mr. February 'cuz its the shortest or coldest month?

Because its the coldest.

Chippendale

Ann, calm down, its only my cousin

Priscilla, was the couch comfortable?

Mel-fall off laps much?

Brian-Are you the one?

Dear Door Decorators, only the bottoms?!

Jeannie-How late? 6! That's past 4! A new record

Happy Birthday Robyn

The Big B.B.C. for Robyn's 21st

Go wild Robyn-you're legal

Kristin: welcome to Bryant and the "Best" suite on campus. Patti.

Nice Picture Wendyl

Cedric lives on in the Hearts of All

Connors beats McEnroe--dinner at the left bank

Do you want to play backgammon? But I hate to lose to girls.

You gotta love those fuzzballs and rugrats

Cindy-Remember you've got a friend Rick

Busch Men-How do you spell relief? C-O-L-D-S-H-O-W-E-R-I

Deborah Ann-I couldn't think of a better friend to celebrate 9/17 and 20 with. Love ya, Robyn

Joe-Poet-the women of 10, want to thank you again, and this is our way to show it.

Deb-Is there a man in the room?!

Pauline-Does he have a hat on?!

Deb & Pauline-you sound like two fighting cats screaming about a man in a hat. Cathy

Only we could be chased by security during the first weekend!

J & M: Make sure you come home to Dorm 7, not 8.

Ann-next time don't throw your drink away!

K--- Rekindle any old friendships?

Remember, you're only glancing this year!

Semper Fi, Bill, What would I do without you?

Gael-Comfy? Would you please get in the back seat! Sleeping in a car is prohibited after 1:00 am! Did you like the ride in the Porsche?

What party are you going to? So are we! Take me drunk I'm home! Candy.

Charles-sick puppy! Nice meeting ya! Group sex on Weds. Be there or be square!

Beach or...throw-up!

Erin, did you like it?

George

New porno shop-65 mph. on 9s5! Tourist

Chase that vet! 95 on 95! Help! T.V.J.L!

Jane/Leah/Vicky-how the --- are ya! Busy-busy-busy sorry! Love ya-Tricia

Cheers! "Clink". To a great year-housemates fer sure! "The Getaway" Rocks!

I don't know you-stop petting my --- he bites!

Drink till you drop!

Dance-Dance-Dance! Just can't stop till you get enough!

Help Wanted

College Students--Part-time Jobs are available for the Fall semester. \$450 per month. All majors are welcome. The hours are flexible. Call immediately--274-7520.

Earn Free Travel and extra money as a Campus Representative for Village Tours & Travel. Call Jim at (617) 383-9560 (9-5 p.m.), (617) 326-6995 (5-11 p.m.) or (617) 545-6604 (5-11 p.m.).

The Library on Rte. 7 in Smithfield needs waiters, waitresses, door personnel and bartenders. Apply in person on Saturday, October 2nd from 12 p.m. to 4 p.m.

COUNTRY DELI

3 1/2 miles south on Rt. 7

10% Discount on any item!

Party Needs Rolling Papers

1 FREE GRINDER w/purchase of 10

open daily 232-1530

MORE PERSONALS

B-have you learned how to drive your car yet?

Pachin-I love your haircut-S.K.

Carol-how was the library Tuesday afternoon?--

Was it an interesting meeting?

Cheryl-have fun with Jesse lately?

Bobby H.-How are the townhouses?

One less!!!

Another one bites the dust!!

Pachin-Need another back rub?

Liz-welcome to our suite-N,J,S

Herb-congrats

Congratulations Mike, it's a boy

Judy B.-something about you makes me smile!!

Happy New Year Bob & Doug!! B.K.

TKE #1

Join the Food Operations Committee!

Student Senate #1

Beth, doesn't the dress make a nice partner.

Jill & Peg, who started the dance?

Nicole, what happened?
I don't know!

Liz, it's gonna be a fun and interesting year!

Julie, can I borrow your T.V. again?

Suds is back and off to the right start!

B, you want to change cars!

M. Masi, how many miles was that?

M. Masi, run from kittens much?

Sigrid, at least we know where the hospital is for my next accident!

Liz, wasn't it fun in Almacs dark parking lot trying to change battery cables?

Sigrid and Julie, did you have fun Saturday night?

Liz, thanks for the candid shots. Just wait though, I'll get you when your pants are down!!

Fins: Are you an ore?

Fins: thanks for the fun times so far and you are an excellent PACWOMAN!

Dorm 7, Excellent job in the scavenger hunt!!

Fins' favorite song: Macho, Macho---, I want to be a Macho---!

Kama Kazie squirt guns will get you!

Fins: who is that cute, sexy man who "talks" to you in the library and the Rotunda? You know the kind of short one who we all like?

Giggle-pus, thanks for the grcen passion chair!!! Guðes who?

Muffin & Beanbag equals passioo

Carol, how is the comfort?

—|

Claudia: Great Party!

—|

W+skie: are yo† an oar?

Blainey: when is the next air raid, water attack? Fins

KDK: Thanks for the great parties! Looking forward to a lot more! Blainey & Fins

Printout: October 25th and December 3rd

Blainey: is it the Eye of the Tiger or Eye in the Sky? Fins

Blainey: only time will tell

Tennis in the swamp anyone?

Jill: welcome to Bryant! Good luck in Life with us! Blainey & Fins

Marie F. & Nicole P.: I'm glad to have you as my little buddies! I wish you both the best of luck at Bryant! Pat B.

Mike M: Congratulations on your new little nephew! Blainey & Fins

Glenn C.: Jr. Class trip to N.J.? By invitation only, of course.

Pit of 9(120's): when is the next keg party?

Hey, pit of 9: How is Bugs Bunny and his carrot?

Tony.....Pizza

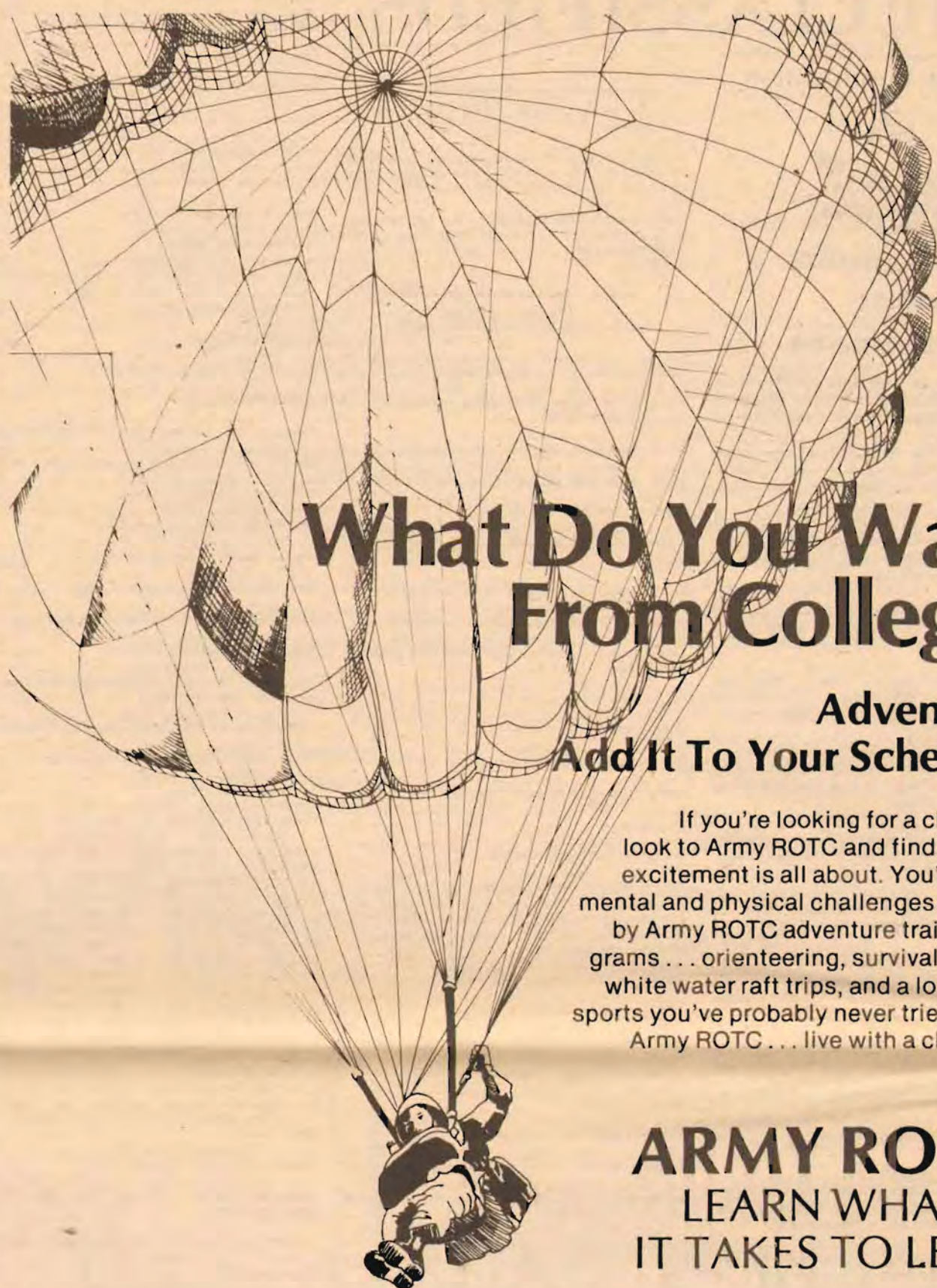
Stacey M.: Have you hugged a bowl in the C.C. lately?

Doreen G.: Happy Belated Birthday (Sept. 18th)

Wyskie is a centerfold & covergirl!

RESEARCH PAPERS

Improve your grades! Rush \$1.00 for the current, 306 page, research catalog, 11,278 papers on file, all academic subjects.
Research Assistance 11322 Idaho Ave., #206W, Los Angeles, CA 90025 (213) 477-8226



What Do You Want From College?

**Adventure?
Add It To Your Schedule.**

If you're looking for a challenge, look to Army ROTC and find out what excitement is all about. You'll get the mental and physical challenges provided by Army ROTC adventure training programs . . . orienteering, survival training, white water raft trips, and a lot of other sports you've probably never tried before. Army ROTC . . . live with a challenge.

ARMY ROTC
LEARN WHAT
IT TAKES TO LEAD

For More Information Contact:

**MAJOR KENNEDY, CAPTAIN KOCH,
OR SERGEANT FIRST CLASS EDSON AT:
231-1200, Ext. 275**

CAREER SERVICES WORKSHOP OFFERINGS Week of September 27, 1982

RESUME WRITING

Monday	September 27	noon	room 269
Tuesday	September 28	3:30 p.m.	room 270
Wednesday	September 29	noon	room 269
Thursday	September 30	3:30 p.m.	room 270
Friday	October 1	noon	room 269

INTERVIEW SKILLS WORKSHOPS FOR OPPORTUNITIES IN

SALES:

Wednesday	September 29	noon	room C-351
Thursday	September 30	3:30 p.m.	room C-351

ACCOUNTING:

Monday	September 27	noon	room C-351
--------	--------------	------	------------

MANAGEMENT:

Tuesday	September 28	3:30 p.m.	room C-351
Friday	October 1	noon	room C-351