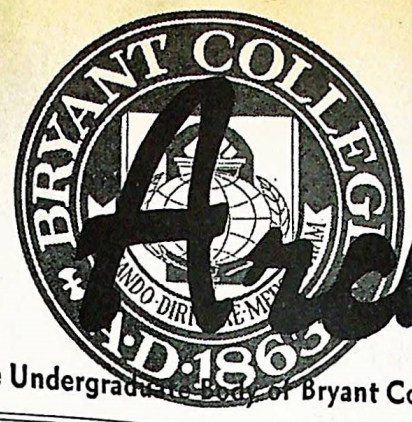


OPEN FORUM
Dec. 18—7 P.M.
Student Activities
Building Aud.
New Campus
To Be Discussed

The Archway



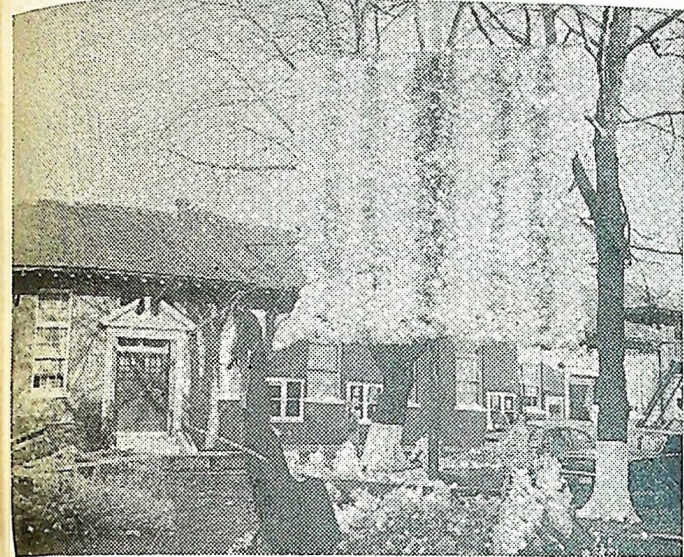
Published by the Undergraduate Body of Bryant College, Providence, R. I.

EXTRA!
Bryant College was re-evaluated by the New England Association of Colleges and Secondary Schools and received a ten year accreditation by that organization. The announcement was made at their 83rd Annual Meeting on Friday, December 6.

Volume XXIX, No. 14

Friday, December 13, 1968

ADMINISTRATION APPROVES NEW CUT PROPOSAL



Pictured here is a sailing ship built by Phi Epsilon Pi Fraternity for this year's Sno' Queen Pageant. Despite almost total destruction of the displays in the wake of a vicious northeaster, Beta Sigma Chi managed a win for their rendition of a Ski Slide.

Indians Win Two In Maine

On Friday, December 6, the Indians left Bryant for their annual week end in Maine. On Friday night the Indians beat St. Francis by a score of 85-66 and on Saturday night beat Nason by a score of 79-66.

On Friday night, before a noisy and boisterous crowd at the Old Orchard Beach High School, the Indians got off to a very fast start. At the seven-minute mark of the game the Indians were leading by a score of 13-2. The Indians continued to play at a very fast pace and at the half Bryant led by a score of 40-22. The strong points for Bryant were George Yates's hook shots and the excellent rebounding, especially by Ben Billie and George Peckham.

In the second half the Indians were cooled off a little but with Joe Goddard and Ed McManus coming off the bench, the team kept its lead at the same level. Joe chipped in with some fine playmaking and rebounds while Eddie put in ten points. Bob Chuprevich played a very strong game for Bryant scoring 26 points and getting 10 rebounds. Bryant was able to keep St. Francis to 66 points because of a defense that closed off the middle to the Maine team which is where they like to take their shots from. They were forced to take long outside shots and they were consistently missing them.

On Saturday night the Indians travelled to Nason College's gym. The Indians started off slow and at the seven minute

mark were leading by a score of 13-11. The game continued nip and tuck and with six minutes left the score was Bryant 29, Nason 27. At this point the Indians got cold and at the half Nason was leading Bryant 36-31. The halftime deficit could be attributed to Bryant's poor first half shooting percentage of 38%.

When the second half began Bryant's Bob Chuprevich got hot. By the time six minutes had gone by Bryant had tied the score at 48-48. For the next 3:30 minutes Bryant and Nason traded baskets and the score was 52-52. In the next 4:22 Bryant outscored Nason by 11-3 to take a commanding 63-55 lead. The Indians were never headed after that. With 4:12 left in the game George Yates scored a rare four-point play. George took a shot and it went in for two points. After the shot George was fouled. George had a one and one situation and he converted both foul shots. The Indians kept their lead and the final was 70-66.

Although every member of the team did a good job over the week end, two players have to be pointed out for outstanding contributions. They are Bob Chuprevich and Ben Billie. Bob scored a total of 53 points and had 22 rebounds while Ben scored 35 points and had 24 rebounds.

As the final scores attest, Bryant's defense was very con-

The administration is pleased with the thought and spirit which has prompted the proposal for a revision of the cut regulations, and is happy to put the new regulations into effect for a one-year trial period beginning with the spring semester.

We should like to make some slight changes in the wording, but not the spirit, of the policy statement to make administration of the plan somewhat clearer.

REVISED POLICY CONCERNING CUTS FROM CLASS

Student Classification Semesters 1 and 2

Cut Regulation
Two weeks of classes per semester, or four cuts from an intersession or summer session class. Overcuts bar student from taking final examination. Where illness or other extenuating conditions justify absences from class, the Dean may grant permission to sit for the examination.

Semesters 3 and 4
Two weeks of classes per semester, or four cuts from an intersession or summer session

class. Overcuts subject to same treatment as semesters 1 and 2.

Exception; Students having a cumulative average of 3.00; no limitation except as dictated by the student's good judgment and best interests.

Semesters 5, 6, 7, & 8
No limitation except as dictated by the student's good judgment and best interests. Exception: Students having a cumulative average below 2.00—subject to the same regulation as semesters 1 and 2.

Absences before and after holidays will be counted as single cuts only.

ADMINISTRATION OF THE PLAN

As soon as is feasible after the opening of each new semester and the summer school, the Registrar shall issue to each faculty member:

1. A copy of the certified enrollment report showing registration by student classification numbers. Faculty members will use this to verify status claimed by each student.
2. By notation on the above list: the following information

- a. Students in semesters 3 and 4 with averages of 3.00 or over
- b. Students in semesters 5, 6, 7, and 8 with averages below 2.00

Faculty members will use this list to apply exceptions to the general regulations.

Administration responsibility to banks, scholarship grantors, state departments of education, as well as the need for information regarding who is and is not attending school, and the necessity of determining the last day of attendance for certain student withdrawals make it necessary that attendance be taken in each class and reported to the Registrar as in the past.

COMMENT

We sincerely hope that each student will react to the less specific cut regulations with a strong sense of responsibility and demonstrate that better, not poorer, scholastic performance is the goal of this change. There are certain undesirable situations which may result from an immature reaction to the more permissive regulations which should be pointed out now.

Excessive cutting before and
(Continued on Page 2)

MASQUERS PLAY A SMASHING SUCCESS

The Bryant gymnasium curtains never opened on such a tremendous performance as they did on Monday and Tuesday night. The Masquers really outdid themselves with their production of Tennessee Williams' "A Streetcar Named Desire."

The real success of the show was brought about by the fine and well done job of acting exhibited by Mary Lou de Manby, as Blanche DuBois, Robert Stosse, as Stanley Kowalski, and Jill Zieber as Stella Kowalski. The other actors in the play were:

- Alicia Frett — A Negro Woman
 - Janice Cortell — Eunice Hubbell
 - Jon Frede — Steve Hubbell
 - Edward Shapanka — Harold Mitchell
 - Kathy Bouchard — Mexican Woman
 - Wayne Beckner — Pablo Gonzales
 - Robert Leightmen — A Young Collector
 - Anne Lamoriello — Nurse
 - Larry Greenman — Doctor
- The production staff included:
William Mitchell — Student Director
Ron Jones — Production
Anne Lamoriello
David Lampron

- Larry Greenman
- Kathy Bouchard — Make-up
- Stephen Russo — Publicity & Programs

- David Lampron — Lighting
 - William Mitchell — Sound Effects
- (Continued on Page 2)

Non-ROTC Officer Candidate Program Available

Male members of the Bryant College Sophomore Class may be enrolled in the Non-ROTC College OCS Program if they can pass the qualifying mental and physical examinations which will be administered in Providence, Rhode Island, in the near future.

This program was authorized by the Department of Defense in 1965, as a means for procurement of young college graduates to serve as officers in the reserve components of the Army. Successful completion of the course of instruction leads to a commission as second lieutenant in the Army National Guard. Sophomores who enroll in the program commence to discharge the normal six-year military service obligation immediately.

Enrollees attend basic combat training only for approximately ten weeks during the summer following completion of the sophomore year. During the junior year of college, trainees attend one week end training assembly each month at Fort Varnum, Narragansett, Rhode Island. At the end of the college junior year, individuals are appointed candidates and continue the week end training for an additional fifteen months. In addition to the week end training, attendance at two fifteen-day summer camps is required. One of these summer encampments follows the junior year of college, while the second follows the senior year. Individuals are commissioned lieutenants on the final day of the second summer training period.

(Continued on Page 2)

(Continued on Page 6)

Business Symposium Results

"The generation gap is exaggerated." Such was the opening statement of Mrs. Mary Girard, the first of the speakers at the College Business Symposium sponsored by the Providence Chamber of Commerce recently.

A personnel director of a major department store, Mrs. Girard felt that college students thought that business was ethically inferior to government or other nonprofit organization service because most of them come from business families and get a prejudiced view of the business world.

"Business is dog eat dog and they see the worst of it. What we hear at the dinner table is not always right."

Mrs. Girard maintained that there is also self-interest in nonprofit activities. "The Peace Corps man, the academic man and the government man are all seeking their own interests. Profits and immorality depend on where these profits come from. Money is a satisfier, not a motivator of people."

"Business has changed more than the public image of business has changed." She thought that business was trying to change its image, but that "image changing takes a long time. We get ideas and stick to them. Image is deeply ingrained. Prejudice is what you think the facts are, not what the facts are."

To combat the popular conception that the college student doesn't have a good taste for business, many new ideas are becoming effective. Included in these are internship programs for students and part-time work for them.

"Business offers a way to come into the mainstream of life and make contributions. Hippies are reacting against materialism. Withdrawing is not the answer."

The Students Do Care

Bryant College's Biafra Day, November 25, was much more successful than had been anticipated. The students of Bryant gave generously. The total received from Faculty, Administration, commuters, night students, dorm students, and the juke box was \$557.00. Many thanks are forthcoming to the people and organizations responsible for the drive's tremendous success including Lynn Hayden, Beta Sigma Chi, Dean Smith, and Mr. Rowe.

Handel's Messiah At Grace Church

Excerpts from Handel's "Messiah" will be presented on Tuesday evening, December 17, 1968 at 8:30, in Grace Church, Westminster Mall in downtown Providence by the Rhode Island Civic Chorale and the Bach Festival Chamber Orchestra under the direction of Louis Pichierri, Music Director.

Economist Foresees No Recession in '69

The Balance of Payments Problem. How many times have you heard that phrase and wondered what was coming off?

Dr. Carl Madden, chief Economist for the U. S. Chamber of Commerce, explained that the exchange of currency between nations is a problem. When one country imports more than it exports, it becomes a deficit country in terms of payments from it to other countries. Gold, as a common medium of exchange, in most cases will leave the deficit country for the surplus country.

This problem of how to handle balance of payments deficits and surpluses is marked by political and economic overtones.

There has been talk for years of an International Monetary System. And recently there has been a good deal of support for such a plan, although not from the "Establishment" (i.e. central bankers and the Federal Reserve System.)

Milton Friedman, a "radical conservative" on business and economics believes that we should let the price of currency fluctuate in response to supply and demand of the currency. Thus there will be no price squeeze.

Does our Balance of Payments deficit embarrass us politically and economically as a

world power? Dr. Madden thought yes and no. "It has weakened people's confidence in us, but has led to a buildup of dollars in the hands of foreigners. They can exchange these for gold and thereby become our creditors."

Most economists are in favor of Friedman's approach, so there's a 50-50 chance that the law will be changed.

A recession come 1969? "No, probably not, although there will be a slowdown in the rate of monetary growth. There will be a turnaround in the Federal deficit to a small surplus and a dampening of the rate at which our money supply is growing. Barring international problems, there will be a resurgence in growth during the last half of 1969."

In answer to a question as to whether or not our country is leaning toward socialism, Dr. Madden stated that "the definition of socialism is that the government owns the instruments of commerce and production. This is not true in the United States." Socialism advocates acknowledgment of the value of humans to life, and "this is good." However, he felt that socialism reached its zenith in popularity prior to World War I and that "it is dead."

The Challenge To Business: Social Problems

"Social revolution is in the wind, and the middle class has not faced up to the problems of civil rights, poverty, pollution, employment, housing and opportunity."

That's Dr. Alfred Seigle, general manager of I. Fleischmans, describing his feelings on the relationship of business to urban problems today.

"The business community must look around to see what can be done to improve conditions. We cannot do business with 90 percent of the people OK and 10 percent neglected."

Unemployment and job training were at the top of Dr. Seigle's list for immediate ac-

tion. "Statistics don't say that the highest percentage of unemployment is for minority groups in urban areas. We can't expect the poor to do this themselves. More tolerance, training and education is needed."

The problems have to be assaulted by all sectors. He felt that business had really come a long way in a few years.

"Don't single out business for not doing something sooner. Nobody else did. The churches didn't. The United Fund seemed to serve only the middle class. It was benevolent philanthropy."

Answering questions, Dr. Seigle said that there would be better control of job training if

The Archway
 Editorial and Business Offices, Student Activities Building
 Bryant College, Providence, Rhode Island 02906
 Tel. (401) 421-6840 — Ext. 247, 261
 Member:
 Intercollegiate Press
 Member:
 Associated Collegiate Press

Letter: Pains of Hunger

Dear Editor,
Once again Bryant College's beacon of recognition shines as bright as other larger universities and accredited by league schools. And once again the students of Bryant College are the contributors. Last night, thanks primarily to the Greek Letter Council and Greg Lamay our stomachs felt the pains of hunger in an attempt to satisfy the stomach pains of others. Quite a different approach wouldn't you say?

Just think, many local, national, and even international problems could be solved by the above tactic. Poverty-stricken parents and their children could exchange houses and clothes with those better off; the helpless criminals could be given another helpful hand from remorseful policemen and jurors. Although these examples are a bit extreme, their point is clear.

And think about your sacrifice last night, your bean and rice poverty dinner. How many of the samaritans who indoctrinated this "Biafra Banquet" were present for the party? Tell me, did you vote especially for

this type of contribution? You omnipresent, omnipotent, righteous spokesmen have spoken once again. The Bryant College image has been strengthened again at the expense of their inhabitants.

Let's all work hard again next summer so we can have more Poverty Dinners. Help those who can help you out later.

Bob Baer

Ed. Note: Due to a backlog of material to be printed, Mr. Baer's letter did not appear last week. Our apologies to him.

CUTS

(Continued from Page 1)
after holidays might very well reduce some classes to the point where the classes would be canceled, thus reducing the number of contact hours and creating a most unhappy feeling on the part of those who did report for the class. In some schools this has been carried to the point where fines were levied for failure to attend pre-holiday classes. Specific attendance regulations may have to be set up for this and other problem areas unless student reaction is characterized by "student responsibility."

Please keep in mind the fact that the new policy will be reviewed at the end of the term period to determine whether it has had a beneficial or detrimental effect on the morale and scholarship of the College. Let's make it a successful experiment.

NON-ROTC

(Continued from Page 1)
The final training requirement of the program is completion of the basic officer course of about ten weeks duration at the Army school of the arm or service into which the individual is commissioned. No other active duty is required. The program requires that the officer remain active in the National Guard until his six-year obligation is fulfilled.

Interested sophomores should contact Dean Smith in the Administration Building, or Lieutenant Colonel Benjamin Hague in Room 129, Armory Mounted Commands, 1051 North Main Street, Providence, Rhode Island, before the start of college Christmas recess. Qualifying examinations may be taken without obligation on the part of the applicant.

MASQUERS

(Continued from Page 1)

- Paula Pascone — Costumes
- Larry Greenman
- Paul E. Gauthier — Faculty Advisor

There are no words to express the appreciation of the cast and company to a man who spent hours of his time to make this play a success—Mr. Paul E. Gauthier. It was only through his guidance, optimism, and expert help that the actors were able to overcome every obstacle confronting them.

The play was produced by special arrangement with Dramatists Play Service Inc. and was a part of a National Competition of college drama clubs. For the first time in Bryant College history, recognition was received

on an opening night from the Providence newspaper.

The list of people who helped in other important ways (sets, advertising, goodwill, and advice) is too long to print here but I am sure that the gratification of having helped show the public that business students are indeed capable in the Arts, is payment enough for their services.

I know that everyone at Bryant is eagerly awaiting the next production, which will be held next semester, and I sincerely hope that you will make it another occasion to make pride and school spirit come alive.

Stephen Russo
Publicity Director

INDEPENDENT,
FRATERNITY AND
SORORITY
BASKETBALL TEAMS:
Sign up for use of gym in
Athletic Department. Second
floor, Activities Building.

In Memoriam
Steven C. Lowell
1947 -- 1968

We would like to extend
special apology to Jill Ziebold
for omitting her name from
the cast in last week's paper.
The Masquers

At Class Meetings Next Week:

STUDENTS TO VOTE ON NEW SENATE CONSTITUTION

This Constitution and these By-laws, having the approval of the Student Body and the Administration of Bryant College, becomes effective at the start of the second semester of the 1968-1969 college year, January 29, 1969.

STUDENT SENATE CONSTITUTION

We, the students of Bryant College, believe in the necessity of having a political body organized for the purpose of representing students. We believe in bringing to the attention of the College all matters which directly or indirectly concern the general welfare of an individual student or the student body as a whole. In order to promote a better College and a better student body, we do hereby adopt this constitution.

Article I: Name

The name of this organization shall be the Student Senate of Bryant College.

Article II: Purpose

Section 1. To act as the official representative of the student body.

Section 2. To present to the College authorities all just requests, opinions, complaints, and grievances.

Section 3. To promote the interests of the student body and to perpetuate student organizations.

Section 4. To give due consideration to any and all proposals that may be of interest to or in the interest of the student body.

Section 5. To promote good relations with the general public through the development of a better understanding of our students.

Section 6. To advise as a group or individually those organizations or individuals who request counsel.

Section 7. To create and develop interests of the student body and to provide an opportunity for the exchange of ideas and information.

Article III: Membership

Section 1. The Student Senate of Bryant College shall consist of two branches: an Executive Council and a Legislative Council. All members of both Councils shall be known as Senators.

Section 2. Membership of the Executive Council.

The Executive Council shall consist of the following:

- Senate Executive Council Officers (President, Vice-President, Secretary, and Treasurer) elected at large from and by the full-time day student body of Bryant College.

- Class Officers. The President from the Freshman, the Sophomore, the Junior, and the Senior Classes or one representative elected by the class.

- Men's dormitory representative.
- Women's dormitory representative.

- One dormitory representative must be President of the Dormitory Council; the other must be a member of the opposite sex.

- Greek Letter Council President.
- Representative from the Senate-recognized clubs on campus to be elected by vote of Club Presidents only.

- President of the Bryant College Interfaith Council.

- Initial Total Membership.

Voting by the Executive Council President shall be for tiebreaking purposes only and may not be used for purposes of veto.

Section 3. The Executive Council shall be empowered annually by vote of the Councils at a joint session held in connection with the annual banquet in the spring. Such power shall include the right to act upon requests, petitions, motions and such other business as may be properly and legally brought before it and to conduct the business of the Senate pending and/or subject to ratification by the Legislative Council.

Section 4. Membership of the Legislative Council.

The Legislative Council shall consist of the following: (Note: numbers given are estimated for date of approval of this document.) After a probationary period, new organizations, when officially approved, will automatically become members.

- 17 Presidents of Clubs—one from each club or organization recognized by the Senate and authorized to function on campus: American Marketing Association Archway Bryant Investment Club Delta Omega Professional Society Glee Club International Club

Lloyds King Size Sandwiches and Delicatessen 119 WATERMAN STREET Corner of Brook Street Providence, R. I. TEmple 1-9242

- Lettermen's Club, Masquers Orchestra, Ski Club, Theta Delta, Weightlifters Club, World Affairs Forum, Young Democrats Club, Young Republicans Club, Youth Guidance, Greek Letter Council Presidents, Dormitory Presidents, Religious Organizations, Vice President, Treasurer, and Secretary of each class.
- 05 Initial Total Membership.
- Vice-President of the Executive Council shall act as presiding officer of the Legislative Council.
- Voting by the presiding officer of the Legislative Council shall be for tiebreaking purposes only and may not be used for purposes of veto.
- Section 5. Each of the above organizations in Article III, Section 4, shall have one vote. The delegate may appoint a representative to deliver the written proxy on a specific issue or issues.
- Section 6. Any organization desiring membership in the Student Senate shall submit to the Student Senate for approval a copy of its constitution and/or by-laws together with a list of its officers and members.
- Section 7. Any organization which has complied with Article III, Section 6, shall become a member of the Student Senate when approved by a two-thirds vote of those present in the Legislative Council. No such vote shall be taken until the organization has served a probationary period of not less than one semester.
- Section 8. All Senators shall be notified in writing at least one week in advance of the voting on a proposed new member.
- Section 9. At the end of the probationary period, any duly qualified voting Senator member may move the acceptance of the new organization as a fully qualified member of the Senate.
- Section 10. Any student organization that requests the use of school facilities, must be recognized by a two-thirds vote of the Student Senate. This organization can still be serving its probationary period.

Article IV: Advisor

Section 1. Nominations for an advisor to the Student Senate shall be made by the Executive Council for each College year.

Section 2. A majority vote of the Student Senate of Bryant College present and voting is necessary before an advisor can be approved.

Section 3. The term of office for an advisor shall be for one College year.

Article V: Student Senate Meetings

Section 1. All Student Senate meetings shall be run by and according to Robert's Rules of Order.

Section 2. Meetings of the Executive Council.

The Executive Council shall meet regularly once a week and at the call of the President, or as requested by seven members, or for a joint meeting with the Legislative Council. Notification for the convening of special meetings must be made twenty-four hours prior to the time of the desired meeting.

Section 3. Meetings of the Legislative Council.

The Legislative Council shall meet regularly every two weeks and at the call of the President, or as requested by two-thirds of the members. Notification for the convening of special meetings must be made twenty-four hours prior to the time of the desired meeting.

Section 4. Petitions for special meetings must be presented to the Secretary at least forty-eight hours prior to the time of the desired meeting.

Section 5. Only the stated business for which a special meeting is called may be transacted at a special meeting.

Section 6. Legislative Council meetings shall be open to the student body at all times.

Article VI: Officers of the Student Senate

Section 1. Executive Council

- A. The Executive Council shall have a President.
- B. The Executive Council shall have a Vice-President.
- C. The Executive Council shall have a Treasurer.
- D. The Executive Council shall have a Secretary.

Section 2. Legislative Council

- A. The Legislative Council shall have a presiding officer who is the

- Vice-President of the Executive Council.
- B. The Legislative Council shall have a Vice-President.
- C. The Legislative Council shall have a Treasurer.
- D. The Legislative Council shall have a Secretary.
- E. The Legislative Council shall have a Parliamentarian.
- F. The Legislative Council shall have a Public Relations Director.

Article VII: Student Senate Elections Committee

Section 1. A Chairman shall be elected by the Executive Council for the Student Senate Elections Committee who may or may not be a member of the student Senate.

Section 2. The Chairman of the Elections Committee shall have the power to appoint his Committee.

Section 3. The total Committee membership shall be an odd number (3, 5, 7, etc.).

Section 4. No candidate for a Student Senate office shall be a member of the Elections Committee.

Section 5. The Student Senate Elections Committee shall supervise all phases of the election for which appointed, including campaigning, voting, and the counting of votes.

- Section 6. Any candidate in a Senate-supervised election has the right to appeal a decision of the Elections Committee. He must submit within forty-eight hours his written grievance regarding such a decision to the Chairman of the Elections Committee. Sufficient evidence to support such an appeal must be provided.
- Section 7. After the grievance has been acted upon by the Elections Committee, the candidate, if still dissatisfied, has the right to appeal directly to the Student Senate by submitting his request for such appeal to the Student Senate (Executive Council) Secretary for referral to the President of the Executive Council.
- Section 8. The decision of the Student Senate is final.
- Article VIII: Election Procedures Executive Council and Legislative Council
- Section 1. The term of all elected officers shall be from June 1 after their election to May 31 of the following year.
- Section 2. All elections for the Student Senate officers must be held in the spring semester.
- Section 3. All candidates running for office must have attended Bryant College at least two semesters before taking office.
- Section 4. Each candidate running for an office must have attained at least a 2.20 cumulative average at Bryant College.
- Section 5. Elected officers may not succeed themselves in office.
- Section 1. A candidate for office to the Executive Council must have at least 100 signatures from the student body on a petition endorsing his candidacy. The names appearing on a candidate's endorsing petition must not appear on the petition of any other candidate running for the same office. Such names will not be counted in determining if the candidate has the required 100 signatures on the petitions concerned.
- Section 2. Candidates shall campaign for a period designated by the Elections Committee for not less than two weeks or more than three weeks.
- Section 3. The date of all elections shall be set by the Elections Committee.
- Section 4. Any member of the student body is eligible to vote.
- Section 5. Any student wishing to vote must present his student ID card before receiving a ballot.
- Section 6. A candidate cannot run for more than one office at any one time.
- Section 7. Candidates may run as individuals or on slates of two, three, or four.
- Section 8. All pertinent information concerning elections will be published and posted for the information of the student body.
- Section 9. Notice of an election will be posted by the Election Committee one month in advance of the election date.
- Section 1. The election of class officers shall follow Article VIII unless otherwise stated in this article.
- Section 2. There shall be a President, Vice-President, Secretary, and Treasurer for each class.
- Section 3. Class members shall be designated by year of graduation, except in the case of two year secretarial students who will be designated Freshmen in their first year and Senior in their second year.
- Section 4. Class elections shall be held once each College year.
- Section 5. A candidate must have a cumulative point average of at least 2.0 in order to be eligible.
- Section 6. A candidate for a class officer must have at least seventy-five signatures from the student body on a petition endorsing his candidacy. The names appearing on a candidate's endorsing petition must not appear on the petition of any other candidate running for the same office. Such names will not be counted

ATTENTION Jobs of Interest Help Wanted by the Journal Bulletin Publishing and Radio Company to conduct tours of the building from 12 noon and after. Pay is \$5 per tour. Contact Student Employment Service on the third floor of the Administration Building.

NEED MONEY TO HELP MEET COLLEGE EXPENSES? If you think that you will need aid for 1969-1970, you should apply at the Financial Aid Office by December 16, 1968.

- E. The Secretary shall carry on all correspondence of the Student Senate.
- F. The Secretary shall carry out any duties that might be delegated to him by the President.
- G. The Secretary shall see to it that the business affairs of the Executive Council are properly recorded and that the records are properly kept and preserved.
- H. The Secretary shall assume the office of Treasurer if that office is vacated for any reason.
- I. If the position of Secretary shall be vacated for any reason or cause whatsoever, a replacement shall be appointed by the President and approved by the Student Senate of Bryant College.
- Article IX: Absentecism
- Section 1. When a Senator has been absent from two regular Student Senate meetings in succession during a semester, he shall be issued a warning notice.
- Section 2. The President of the Executive Council shall ask that a new representative be appointed for an organization that has not been represented at a meeting for two successive meetings. If the representative is absent for one more meeting, the organization shall lose its representation for one year.
- Article XI: Amendments to the Constitution and/or By-laws
- Section 1. This Constitution may be amended by a two-thirds vote of the Senators present and voting.
- Section 2. Proposed amendments or additions to this Constitution and/or by-laws shall be sent to the Secretary of the Executive Council.
- Section 3. The Secretary of the Executive Council shall notify each Senator of the proposed amendment or addition in writing.
- Section 4. Each Senator must be notified two weeks prior to the proposed time of voting.
- Section 5. Failure of any Senator to receive a copy of the proposed additions or amendments to the Constitution will void any vote taken on such additions or amendments.
- Article XII: Powers of the Student Senate
- Section 1. The Student Senate shall have the right to use any facility belonging to Bryant College so long as the use is reasonable.
- Section 2. The Student Senate may present to the College authorities all requests, opinions, and grievances, and may suggest the solution of same.
- Section 3. The Student Senate shall have the right to use the means of public announcement available on the campus.
- Section 4. The Student Senate shall have the right to censure any Senator by a two-thirds vote of those Senators present and voting for violation of this Constitution or for any other actions unbecoming a Senator and a representative of the student body.
- Section 5. The Student Senate shall have the right to summon to a hearing and impose sanctions upon or suspend any student organization for violation of the Student Senate rules.
- Section 6. A two-thirds vote of the Student Senate shall be required to impose sanctions or suspensions.
- Section 7. The Student Senate shall be a policy-making, deliberative body.
- Section 8. A two-thirds vote of all members of the Student Senate shall be required to impeach any officer of the Student Senate whose actions have been deemed detrimental to the Student Senate of Bryant College, or to Bryant College.
- Section 9. The Student Senate shall enforce all penalties for violations of this Constitution.
- Section 10. The defendant may employ any other student of the College as his counsel.
- Section 11. Motions may originate in either house. However, any motion originating in the Legislative Council must be acted and voted upon first by the Executive Council. Regardless of the outcome of this vote, each motion must then be sent to the Legislative Council for a vote.
- Section 12. If the Executive Council votes against a motion, the motion can still be passed by a two-thirds vote of the total membership of the Legislative Council.

A.M.A. DINNER SPEAKER MEETING Wednesday, Dec. 13, 1968 The R. I. Yankee Motor Inn See Don Albert in Room 2 Gardner By 3 P.M. Today

INVESTMENT CLUB MEETING Tuesday, December 17, 1968 Room L-2 - 3 P.M.

The Finest in "Stuff" EAST SIDE HARDWARE CO. 166 Wickenden Street Phone 521-8853

SIDNEY OFFICE SUPPLY CO., INC. 150 Wickenden Street Providence, Rhode Island Phone 421-1896

"Archmate" of the Week



Harre Zieber

Photo by Kahn

"I had intended to go directly into the business world after high school," yet if Harry had done that she would not be an Archmate. Harry, a she? Profoundly enough, Harre Zieber from Delanson, New York spells-out our Archmate. She does accept the fact that her father wanted a boy.

As a Freshman, she is studying within the Executive Secretarial Program. Her current acting endeavor in a play called *A Streetcar Named Desire* allows her to portray the character of Stella whose matter-of-fact attitude would be so inclined by Harre as to be a permanent feature.

Our gal this week is nicknamed Jill. She had this to say concerning that ever prominent question, "What is your view of Bryant?"

"I think Bryant qualifies a girl for an executive secretarial position, but I must say that the rules for example the curfew, has to be adjusted to allow restriction. On the other hand, expansion, so that the situation of going from one mother at home to one on campus doesn't exist."

Jill does concede that even though her career must come first, the secondary feature to her life will be to marry. Hopefully, our Archmate, with her past dancing experience in ballet, would like to try it, once again, in addition to widening her acting career.

This talented lass proves to be quite out-going. Harre enjoys the ratio of girls to boys on campus. But who would object if you were Harre? Even though Jill comes from a small town, "I find college, certainly, not a rehashing of high school."

Phi Sig Sponsors Children Party

By Brian Kent

Tomorrow afternoon Phi Sig will sponsor a Christmas party for orphans at the Lakeside Children's Home. Each year the brothers of Phi Sig and our sisters of S.I.X. bring a little happiness and hope to orphans at the children's home. Presents will be given out by "Santa", and Christmas Carols will be sung. We would like to thank all of the people who made this possible by purchasing our raffle tickets.

Tonight our annual Christmas Banquet will be held at the Coachman in Tiverton. The Social Pledges will perform a skit for entertainment and amusing presents will be distributed to the brothers. Thanks go to Tommy Marcello and Rich Preach for directing this year's banquet.

Joanne did a fine job representing Phi Sig in Sno' Queen Week End and our best to her from the brothers.

Beta Sigma Omicron

The plans for our TEA are completed. The Sisters are anxiously awaiting the day of our TEA. All Freshman and Independents are cordially invited to attend. We know that everyone will have a great time.

Our SPLASH PARTY was very successful. We know that all who attended had a good time.

BETA'S BAKERY will be in business again. Our CAKE SALE will be held tomorrow at the Big G in Warwick.

Congratulations to Sharon DeMerchant for doing such a great job representing BSO and PHI EP at Sno' Queen.

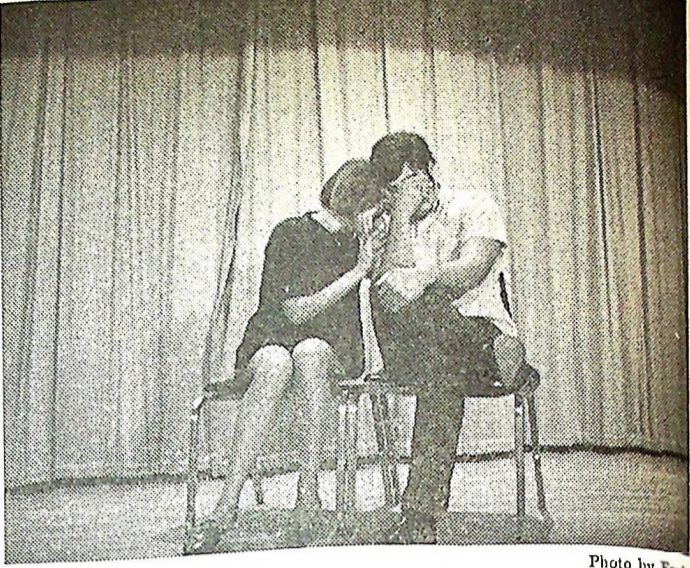


Photo by Fred

The successful performances by the Masquers on Monday and Tuesday night were due largely to the many hours of rehearsal. This was the cast's reaction after the last curtain as Mr. Gauthier fell off the edge of the stage taking his final bow!

Tau Epsilon Phi

By Charlie Turcotte

To begin with, our 31st Annual Sno' Queen week end turned out to be a really great success. Much of the success of any week end depends greatly on student participation, and Sno' Queen certainly had it. From the motorcade on Tuesday, to the judging, to the ball at the Gristmill last Friday, the student body along with the individual fraternities and sororities showed remarkable interest and spirit. The Brothers of TEP are sincerely grateful for this

and would like to thank everyone who made Sno' Queen '68 the big success that it was.

Vince Chancellor Gene Biben should be given special commendation for his excellent performance in organizing and making the week end really go. I would also like to take this opportunity to thank all of my Brothers for all the work that they put into the week end. Each brother had a job to do and each did it with a great sense of unity and purpose. Congratulations Brothers on a great Sno' Queen!!!

Sigma Iota Beta

The sisters would like to congratulate Pat Turkel, TKE's candidate for Sno' Queen, on doing a fantastic job. Pat, we're really proud of you. We would also like to congratulate all of the other candidates who participated in the Sno' Queen competition Thursday evening.

Congratulations are also in order to Carolyn Zedda for winning the Fall Tennis Championship.

We're looking forward to our formal tea Sunday afternoon, which will be held at 1:30 in Providence.

—Peggy Zerilli

Investment Club Purchases Shares In Computer Organization

The Bryant College Investment Club has increased its investment holdings with the recent purchase of 10 shares of Cal Comp common stock at \$38 5/8 per share. Members of the club voted for the purchase after hearing reports presented by several student researchers. Other investment prospects considered and reported on were Automatic Data, Systems Engineering, Scientific Data and Memorex.

Cal Comp was originally brought to the attention of the club members by Mr. Knox at a prior meeting. California Computer Products, Inc., was incorporated in California, September 17, 1958. The company manufactures digital data processing devices and systems and

other electronic systems for scientific, business, and industrial uses. The company is also engaged in the production of special purpose data processing equipment for the United States Government.

Members of the club, needless to say, are highly optimistic about the future outlook for Cal Comp. Fully expecting to further increase their holdings within the very near future, club members are concerning themselves presently with researching other investment prospects.

The next meeting for the club will be held on Tuesday, December 17, in Room L 2 at 3:00 p.m. and all students are invited to attend.

S.I.X.

Congratulations to Joanne Nielsen for doing such a tremendous job at Sno' Queen judging. Thanks Joanne! T.E.P. put on another good Sno' Queen as usual.

Our "Come like a Bum" Hobo Party was a great success. The sisters had a great time, and I hope all those who attended did also. It was really a lot of fun.

The Christmas Banquet is coming up on December 13. From what was said about last year's banquet, it was quite an experience. So, SIX and Phi Sig

don't miss it. Remember—it's all good, clean fun? whatever that means.

We have another smashing happy hour this afternoon. Meet in front of the Union at 3:00. All welcome.

Sisters, basketball is coming up so let's start practicing. We are going to work extra hard this year!

Getting Engaged?
 Been Pinned?
 Getting Married?

The ARCHWAY will be happy to print your announcement. Just drop a note off at the office, we'll do the rest!

BROOK STREET
Coin-Op Laundromat
 "One of the Nicer Laundromats"
 Corner of Brook and Transit Streets

Are Auto Repairs too High?
 Would you rather do it yourself?

NOW YOU CAN!

U-DO-IT

Self Service Auto Repair
 Offers you,
 Tools and Equipment to Work With,
 Expert Diagnosis and Guidance.

Visit us at 26 Oakdale Avenue, Johnston
 Just off Killingly Street—2 Streets
 After the New Rte. 6 Overpass.

Weekday Hours Will Be From
 6 P.M. to 12 Midnight

Saturdays from 8 A.M. to 5 P.M.

Schedule of Final Examinations

All students having conflicts between two examinations should report this fact to the Deans' Office between December 16 and 20. Special arrangements will be made for these cases. Except for those having conflicts, all examinations will be given at the scheduled time ONLY.

MONDAY, JANUARY 6, 1969		9 a.m.
A.6	Cost Accounting	AB
A.7	Accounting Systems	A
Ec.7	Accounting III	AB
E.1	Investments	AB
E.2	English Composition I	ABCDEFGHIJKLM
Mk.7	English Composition II	AB
	Problems in Marketing	AB
MONDAY, JANUARY 6, 1969		1 p.m.
Ec.11	Corporation Finance	ABCD
E.4	Modern Prose Forms	ABCDEF
E.7	Written Communications	ABCD
SS.10	Introduction to Political Science	ABCD
	Principles of Sociology	ABC
TUESDAY, JANUARY 7, 1969		9 a.m.
Ec.1	Principles of Economics I	ABCDEF
Ec.2	Principles of Economics II	A
Ec.3	Money and Banking	ABCDEF
TUESDAY, JANUARY 7, 1969		1 p.m.
Ec.2	Philosophy of Education	A
Ec.4	Meth. of Teach. Social Bus. Subj.	A
E.3	Word Study	ABCDE
E.9	British Literature	A
H.1	Introduction to Philosophy	A
M.4	Quantitative Analysis for Business	A
O.3	Office Techniques	ABCD
SS.11	American Government	A
SS.33	Geography of North America	A
WEDNESDAY, JANUARY 8, 1969		READING PERIOD
THURSDAY, JANUARY 9, 1969		9 a.m.
A.3	Intermediate Accounting I	AB
L.1	Introduction to Business Law	ABCDEF
L.2	Law for Management & Marketing	A
L.3	Law for the Accountant I	A
L.5	Survey of Law I	AB
Mk.1	Principles of Marketing	ABCDEF
THURSDAY, JANUARY 9, 1969		1 p.m.
Ec.14	Comparative Economic Systems	A
E.13	The Modern Novel	A
P.2	Psychology of Pers. & Social Adj.	A
SS.2	Physical Science II—Physics	A
SS.4	History of the 20th Century	A
SS.5	History of East Asia	A
SS.10	International Relations	A
FRIDAY, JANUARY 10, 1969		9 a.m.
A.1	Fundamental Accounting I	ABCDEF
A.2	Fundamental Accounting II	A
A.10	Auditing	A
A.11	Accounting for Management	A
A.13	Industrial Management Accounting	A
A.21	Accounting V	A
Ec.8	Analysis of Economic Conditions	ABCD
Ec.10	Insurance	AB
Mg.2	American Economic History	AB
Mk.2	Industrial Management	A
Mk.3	Retailing	A
Mk.5	Marketing Research	A
Sc.4	Biology I Introduction to Biology	ABC
FRIDAY, JANUARY 10, 1969		1 p.m.
H.4	Appreciation of Music	AB
Sc.6	Biology II—Phys. of Human Anat.	AB
SS.1	Western Civilization	ABCDEF
SS.6	History of the Modern World	AB
MONDAY, JANUARY 13, 1969		9 a.m.
Ec.9	Principles of Economics	AB
E.8	Introduction to Literature	ABC
Mg.4	Labor Relations	A
Mk.4	Elements of Advertising	ABCD
M.1	College Mathematics I	ABCDEF
M.2	College Mathematics II	A
M.6	Mathematics of Finance	ABC
M.10	Pre-College Mathematics	A
MONDAY, JANUARY 13, 1969		1 p.m.
Ec.8	Government and Business	A
Mg.8	Electronic Data Processing Mgt.	ABC
Mk.6	Advertising Media	A
P.4	Psychology of Learning	A
SS.2	History of the United States	AB
SS.50	Introduction to Geography	AB
TUESDAY, JANUARY 14, 1969		9 a.m.
A.4	Intermediate Accounting II	A
A.14	Income Taxes I	A
A.15	Income Taxes II	A
A.17	Accounting I	ABCDE
Mk.3	Salesmanship	A
TUESDAY, JANUARY 14, 1969		1 p.m.
A.9	Advanced Accounting	A
Mg.1	Sales Management	AB
Mg.3	Personnel Administration	ABCD
P.1	General Psychology	ABCD
WEDNESDAY, JANUARY 15, 1969		9 a.m.
A.16	Taxes and Business Decisions	ABC
L.4	Law for the Accountant II	ABC
Sc.1	Physical Science I—Earth Science	ABCD
WEDNESDAY, JANUARY 15, 1969		1 p.m.
Mg.6	Business Organization	AB
M.3	Statistics	ABCD

Examination Conflicts—Every effort is made to prepare examination schedules which will avoid conflicts. However, students who transfer credits or fail to stay up with their class will be taking courses out of sequence and may have conflicts between two or more examinations. Examination schedules are posted well in advance and ample time is allowed to report conflicts. For those who report as scheduled, special examinations will be arranged at no charge. However, when a student fails to report his conflict within the period specified, he will be assessed a fee of five dollars for his delinquency.

BRYANT SENIOR ATTENDS WASHINGTON CONFERENCE



Photo by Baruch

Mr. Charles Bradley

Bryant's reputation on the national scene is without doubt on an upward trend. For those among you who still doubt this truth, the record will speak for itself. Students and student groups are actively participating in college activities around the country, all off their campuses. Bryant, as a growing institution, has not been left behind in any of these programs, and as proof, we have the recent Washington Conference and Orientation for the General Accounting Office attended by Mr. Charles Bradley, a senior Accounting major.

Charles was selected from some seventy-odd accounting students in Dr. Goulston's Advanced Accounting course. The

trip to Washington lasted two days and included conferences with Accounting Office employees and directors and tours of various facilities in the area.

The program began on Thursday with a talk with the director of staff development of functions and purposes. Here, the director related the ultimate usage of the data and information produced by this government department.

Following this discussion, there were meetings with various division directors to learn of their various operations and responsibilities. Of the many departments visited, Mr. Bradley related that he felt the Office of Policy and Special Studies was his favorite mainly because of

the extensive research facilities that this department had. He further stated that this department had extensive Electronic Data Processing information, and that the members on the staff provide all the needed formal training in addition to the traditional on-the-job routine for employees of the General Accounting Office.

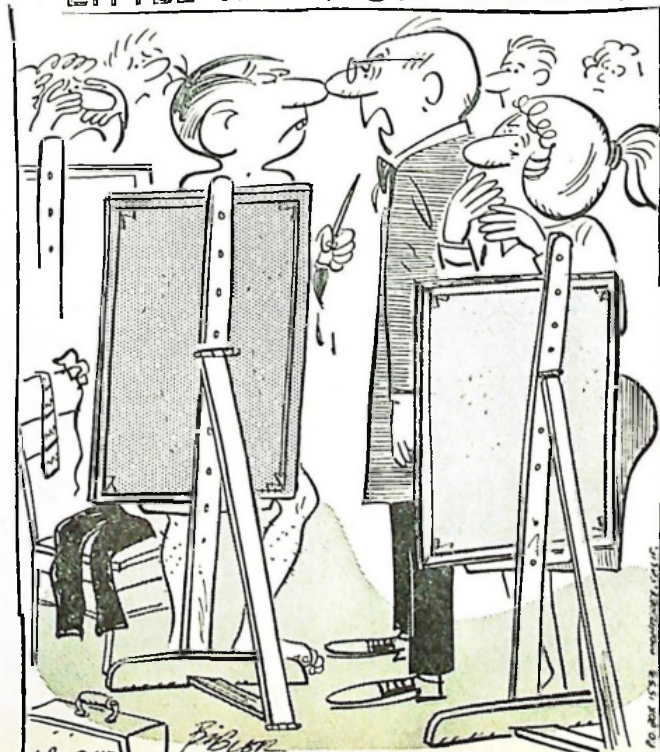
On Friday the other members of the conference, along with Bryant's representative took a tour of the Goddard Space Flight Center in nearby Maryland. While there, the students viewed the back-up ground control that was originally used as the main area for the earlier Canaveral missions. Included was a tour of a space museum that contained mostly replicas of some of the electronic packages sent into the outer atmosphere. Mr. Bradley stated that he gained a better appreciation of Government Accounting from his trip noting his conversations with people with many years of service in the agency. Most felt that they enjoyed their work with the agency stating that the continuing interest through the challenge of the assignments helped them choose this area for a career.

SOME FACTS ABOUT THE AGENCY

When the new accountant joins the agency he spends his first few weeks in orientation sessions learning the procedures of the department. Following this, he is given three assignments for the balance of the year. During this period the accountant attends numerous conferences and seminars.

All accountants with the bachelors' degree begin with a rating of GS-7 which calls for a current starting salary of around \$7913. After a year the first promotion comes as a GS-9 with a change in assignment for approximately 15 months. This period is generally followed by a promotion to GS-11 with changes in assignments of two to three years in duration.

LITTLE MAN ON CAMPUS



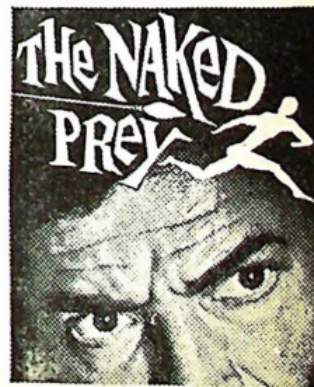
"LOOK - STUPID WHEN I SAID WE'D DO A PAINTING IN THE NUDE."

Bryant Cinema

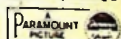
AT THE AUDITORIUM
WEDNESDAY,
DECEMBER 18
7:30 P.M.

Paramount Pictures Presents

CORNEL WILDE as



Technicolor Panavision



Sports Editorial

With the Indians' first two games now having been played, the basketball team's move to Marvel Gym seems even better than it did when the move was first announced.

Each gym has its advantages. However, Marvel's far outweigh Hope's. The advantages that Bryant had when playing at Hope High were the laundry service for our practice jerseys and towels being provided to us.

The disadvantages of Hope were many. When a fan was told that the game was being played at Hope, he would ride by the school on Hope Street and see no lights. He would ride down Olney Street and still see no lights. When he finally would go into the parking lot in the back he would see one light bulb over the doorway to get in. When he parked his car he would hope he would not get mugged on his way in. When sitting inside he hoped his car would still be in one piece when he got out. (Last year one fan had his four tires stolen.) Once he got inside Hope High there was another struggle. To get to the gym on the second floor there was only one staircase for both fans and teams to go up. That was (and still is) a fire hazard. The gym seats only 800 people. If it was a big game there would be very little room for fans because very often fans from the visiting college would also come. To squeeze as many fans in as possible, fans would be seated at both ends of the court, and this would be very dangerous for both fans and players when a player went into the basket for a layup.

Let's look at Marvel Gym for comparison. It is in a better neighborhood than Hope and there is much less danger for one's car. The area is well-lighted and there is ample parking across the street. Inside the gym there is ample room to walk in, and there is no flight of stairs to climb. The players come into the gym from a separate entrance; so there is no competition between the fans and players when coming in or going out of the gym. The gym seats 2400; so there is ample room for all who want to come to the games.

So, it is easy to see, Bryant now has a major college set-up for its basketball. The fans no longer have to listen on radio and television that there is a college basketball game at a high school.

Buddy Meyer

Advertising Man

To Speak To Delta Omega

On Monday, December 16, Delta Omega Professional Society will hold its second dinner-speaker meeting of the year. Speaking to the Society will be Mr. Joseph M. Bernstein of Bo Bernstein & Co., Inc. The Bernstein agency is prominent in the development of new concepts of advertising. The company pioneered the development of pre-print inserts and was the first to insert space in regional editions of *Life*, *Look*, and *Saturday Evening Post* when they were still in experimental stages.

In February, 1967, Joseph (Bo) Bernstein was the recipient of the American Federation of Advertising and *Printer's Ink* Silver Medal Award and was named Rhode Island "Ad Man of the Year." In April, 1941, he founded Bo Bernstein & Co., Inc., a one-man operation whose

first year's billing was approximately \$100,000. Today the agency employs about 125 people and does around a \$14 million annual billing.

For those students who are not familiar with Delta Omega, the Society was organized for the purpose of conducting and promoting the study of business, and to further the interests in general business topics. It is open to any Business Administration or Teacher Education student, male or female. During the course of the year Delta Omega holds five dinner-speaker meetings at the Admiral Inn Restaurant in Cumberland, R. I. Any student who is interested in becoming a member of Delta Omega for next semester should contact any of the officers or members of the Board of Directors in the organization.

Elmo's Pro-Football Predictions

By Elmo Upset

The regular season in Pro-Football heads into its final week this week end. After next week end, the divisional playoffs in each league will be held to determine the representatives from the N.F.L. and the A.F.L. for the right to play in the Super Bowl.

Last week I had a total of 10 winners out of 13 games for a percentage of .769. My totals for the season to date read 118 winners out of 159 games and 5 ties for a .740 percentage.

In the N.F.L., two more divisional titles were decided. The Baltimore Colts won the Coastal Division title by virtue of their victory over the Green Bay Packers, while the Los Angeles Rams were upset by the Chicago Bears. The Rams, because of an error by the officials, were given one less down than they should have been given in a crucial moment at the end of the game. It could be called the \$25,000 gyp. Twenty-five thousand dollars is the amount each Ram player could have received by going to and winning the Super Bowl.

The Cleveland Browns by defeating the Washington Red-

skins won the Century Division title and the right to play the Dallas Cowboys for the Eastern Conference Championship.

The Central Division winner will be decided next week. The Chicago Bears and Minnesota Vikings are tied for first place. If both teams tie for the title, the Bears will play the colts because the Bears outscored the Vikings in their two games.

In the A.F.L.'s Western Division, the Kansas City Chiefs, and Oakland Raiders are still tied for first place. It looks as though these two teams will wind up tied and will have to have a special playoff for the right to play the New York Jets for the A.F.L. championship.

After consulting my oujija board, here are my predictions for this week's games:

- Cleveland over St. Louis
- Baltimore over Los Angeles
- New York over Dallas
- Washington over Detroit
- Chicago over Green Bay
- Minnesota over Philadelphia
- New Orleans over Pittsburgh
- San Francisco over Atlanta
- Kansas City over Denver
- Houston over Boston
- New York over Miami
- Oakland over San Diego

INDIANS

(Continued from Page 1) sistent, allowing each team the identical 66-point score.

The box scores:

Friday Night				Saturday Night			
Bryant		St. Francis		Nasson		Bryant 21	
G	F	T	G	F	T	G	F
Billie	6	5	17	Reagan	5	5	15
Greenblatt	0	0	0	Kudlnick	0	1	1
Yates	5	2	12	Kier	1	1	1
Chuprevich	10	16	26	Lyons	2	1	3
Peckham	3	7	13	Kunces	1	1	3
Zilliox	2	0	4	D'Arrico	6	0	12
Gray	0	0	0	Regula	2	2	8
Goldard	0	3	3	Feranti	1	1	3
McManus	4	2	10	Piccola	7	1	15
Johnson	0	0	0	Markowski	1	0	2
Garrett	0	0	0	Caovette	0	2	2
DeSousa	0	0	0		1	0	2
30 25 85				26 14 66			
Halftime Score Bryant 40—St. Francis 22				29 8 61			
Friday Night				Saturday Night			
Bryant		Nasson		Bryant 21		Bryant 21	
G	F	T	G	F	T	G	F
Billie	8	2	18	Lane	3	1	7
Greenblatt	4	1	9	Luthe	3	2	8
Yates	6	5	17	Tisdale	6	4	16
Chuprevich	11	5	27	Harriman	5	9	10
Peckham	3	3	8	Brosnahan	10	1	22
32 15 79				29 8 61			
Halftime Score Nasson 36—Bryant 31				29 8 61			

Carol Sing Tuesday

By Peter Grainger

On Tuesday evening, December 17, at 7 P.M. in the Student Activities Auditorium, the Bryant Glee Club and the Bryant Band, "Stardusters", will provide an evening of music and good listening for Bryant Students. A good portion of the program will consist of music with a Christmas touch. Miss Ruth Tripp, the Glee Club's new advisor, and Professor Ralph S. Handy, the Band's Advisor, both have been working very hard preparing their groups for this occasion.

The Glee Club will be singing "Little Drummer Boy," "What Child is This?," "Shepherds Awake," and then join with the audience to sing many popular Christmas Carols. The Band will play several well-known numbers and then combine with the Glee Club and do "Edelweiss" and "The Sounds of Silence."

Glee Club President, Jeanne Ritchie, noted that there are very few places on campus for students to join in and sing Christmas music. This evening will be the time and the place. Let's show some Christmas Spirit and support these performers who are putting this show on for you—THE STUDENTS.



SKI CLUB OFFICERS contemplating this week end's trip to Mt. Snow are (l to r) Mr. Fontaine; Steve Hill, Vice President; Steve Garmen, President; Lydia Cohen, Secretary; Larry McManus, Treasurer, and Mr. Lague.

Phi Epsilon Pi

By Alan Potter

Thank you, Sharon, for doing a spectacular job at least week's judging. We're all very proud of you. Thanks also go out to jock Marshall for the superb job of planning, supervising, and building of our display. Last, but not least, we must thank all of those brave people who stayed up all night to complete the display in time for the judging.

All freshmen who received in-

itations to our Christmas Party should contact a brother this week end if he plans to attend. I know its going to be the best Christmas Party on campus this year.

Make your plans now to attend Phi Epsilon Pi's Mardi Gras Week end which will be held the first week end of next semester at the Sheraton Biltmore Ballroom.

Beta Sigma Chi

The brothers of Beta congratulate Tau Epsilon Phi on presenting a great Sno' Queen week end. All of the brothers attending had a good time. Special thanks go to our candidate Mary Simms for the fine job she did representing us.

Congratulations are also in

order to Brother Jeff Bauer on his engagement to Brenda.

On the social scene, social chairman Jim Gerardi is planning a "Different" kind of party so contact any brother of Beta for information and an invitation.

Crystal Ship To Play Mystique

On Sunday night, December 15, the MYSTIQUE will open its doors to the fabulous sound of the CRYSTAL SHIP. There will be no admission charge and the snack bar will be open to all Bryant students.

The action will start at eight o'clock in the Wigwam and will be over at eleven. There will be dancing and a psychedelic atmosphere. The Wigwam will be decorated with strobe and special effect lights as well as the best from psychedelia.

The MYSTIQUE is being financed by your Student Senate in order to alleviate any cost to you.

For an inexpensive date, or just for a chance to get together with your friends—come to the MYSTIQUE this Sunday night.

Delta Sigma Phi

Congratulations to TEP for a really great Sno' Queen Week End.

Our basketball team will be starting practice very shortly. If you are interested in being on the team, ask David Carbonetti when and where our practices will be held. We hope to have a season which was at least as good as last year's season.

Well, tonight's the night of our annual Christmas Party. I feel that everyone will have a terrifically high time at this gala affair.

Alpha Sigma Tau

Our annual Tea was held last Sunday. Everyone had a wonderful time, and we hope that everyone enjoyed our little skits. We also hope that we gave you a good preview of pledging. Now you can practice for February, ahead of time.

Brothers, sorry about the last article. It was a joke.

Classifieds

Rock Soul & Psychedelic Bands Available for: Mixers, Parties, etc. Satisfaction guaranteed. Grandchamp-Wheaton Associates, 781-2820 after 1:30 P.M.

Roommate needed. Second Semester. Apartment University Heights. Call Jim Coultts at 831-9424 Parks House.

For Sale: Sports Jackets, Sizes 38 & 39. Call 751-4603 After 6:00 P.M.

Famous Makers Sample line of Dresses, suits, coats, slacks at cost. Sizes 7, 9, 10, 12. Evening appointments call 941-2668.

ONE-HALF DAY
FRIDAY, DEC. 20
Double Cuts
FRIDAY Only